

Rapid casting resin
for interior use



ASODUR[®]-GH-S

Rapid setting casting resin for reliably closing cracks,
particularly simple to apply

Problems Solved.



Rapid setting silicate casting resin for interior use

ASODUR®-GH-S

2-component casting resin, tested low-emission, mixes without tools and with very good penetration capability



Technical data

Basis	Modified silicate resin, 2-component
Mixing ratio	1:1 parts by volume
Application / substrate temperature	+5 °C to +30 °C
Processing time	approx. 15 min. at +10 °C approx. 10 min. at +20 °C approx. 7 min. at +30 °C
Overcoat after	approx. 25 min. at +20 °C
Packaging	2 × 300 ml bottle in the set 6 sets in the box
Material consumption rate	depending on width and depth of the cracks and joints

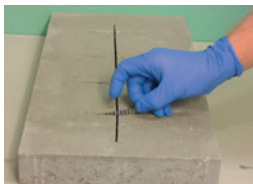
Application



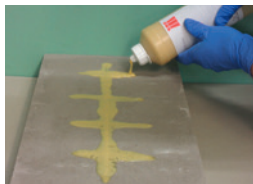
Mix the components



Shake for 15 seconds



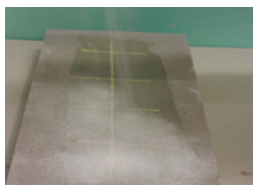
Insert screed clamps



Cast free of voids



Remove excess material



Sand with quartz sand
(0.1 - 0.6 mm)



Areas of use

- ASODUR-GH-S is a particularly rapid reacting casting resin for the powerful closing of cracks and joints in unheated and heated cementitious screeds.
- It is particularly suitable for time-critical work and on construction sites with no power supply.

Properties

- Suitable for crack and joint widths up to 5 mm.
- Ready for overcoat after just 25 minutes (at +20 °C).
- 2-component, supplied ready for use in predetermined mixing ratio.
- Possible to mix smaller quantities without difficulty.
- Mix without tools and application without waiting time.
- Very low-emission per EMICODE EC1-PLUS.
- Low-odour during application, odourless after hardening.
- Resistant to alkaline solutions, diluted acids, salt solutions and many organic solvents.

SCHOMBURG GmbH
Aquafinstraße 2-8
D-32760 Detmold (Germany)
Telephone +49-5231-953-00
Fax +49-5231-953-333
www.schomburg.com



 **SCHOMBURG**