

Product information

Primers

ASO[®]-Unigrund-K

Concentrated primer



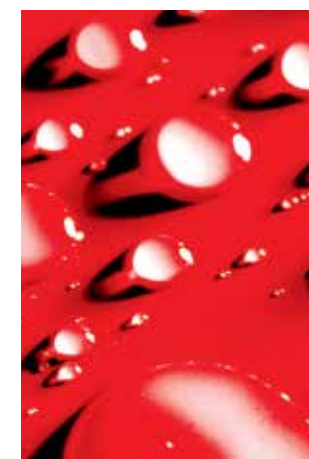
Technical Data:

Basis:	acrylate dispersion
Mixing ratio:	1:3 to 1:6 with water
Application/ substrate temperature:	+5°C to +30°C
Consumption:	approx. 30 - 80 g/m ²
Packaging:	1, 5, 10, 25, 210 litre containers

* at +20°C and 65% relative humidity

Areas of application:

- ASO[®]-Unigrund-K reduces the absorption of substrates, binds surface dust, consolidates, prevents rapid water loss from levelling compounds.
- ASO[®]-Unigrund-K is used for priming absorbent and lightly sanded substrates e.g. gypsum-based construction materials (plaster, interlocking gypsum slabs, boards, screeds), concrete, masonry work and similar.
- ASO[®]-Unigrund-K is suitable as an adhesion promoter for surface applied waterproof membranes (e.g. SANIFLEX, AQUAFIN[®]-2K/M), thin-bed adhesives as well as wall and floor levelling compounds such as SOLOCRET[®]-50, SOLOPLAN[®]-30 and ASO[®]-NM1.5. It is also suitable for exterior use.



ASO®-Unigrund-K

Concentrated primer

Properties:

- Concentrate, highly dilutable
- Rapid drying
- Universal application
- Resistant to water and alkalis
- Low emission
- Solvent free
- For interior and exterior use

Product preparation:

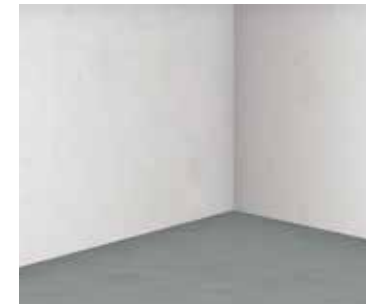
ASO®-Unigrund-K is diluted 1:3 to 1:6 with water dependent on the substrate condition, the application involved and the absorption. Beneath wall and floor levelling compounds use at a mix ratio of 1:3 with water. Application is with a paint brush, brush or a fine-pored sponge roller but it can also be sprayed with suitable equipment. Avoid applying too thickly or forming puddles. ASO®-Unigrund-K must be fully dry before further work can be carried out on the primed surface.

Application:

The substrate must be load-bearing, clean, dry and free from materials, which will impede adhesion. Flow screeds must be abraded and vacuumed. Remove unstable or weakly bonded layers e.g. release agents, residues of old adhesive, levelling layers, surface finishes and paints, by mechanical scrubbing, planing, scabbling or shot-blasting.

Areas of use/application	Degree of dilution (parts by weight ASO®-Unigrund-K : parts by weight water)
Smooth, dense substrates such as concrete sections, highly compacted cement-based screeds as well as consolidating slightly sanded substrates in interior areas	1 : 3
Substrates with a gypsum binder (gypsum planks, gypsum plaster, moisture resistant plasterboard, gypsum fibreboard, calcium sulphate screeds)*	1 : 3
Dust binding and regulation of the absorption of porous, highly absorbent substrates (cement-based screeds, concrete, cement-based and lime-cement-based plasters/renders) in interior and exterior areas	1 : 4 bis 1 : 6 (dependent on the absorption of the substrate)

* Consult the technical data sheet regarding the installation of large format tiles!



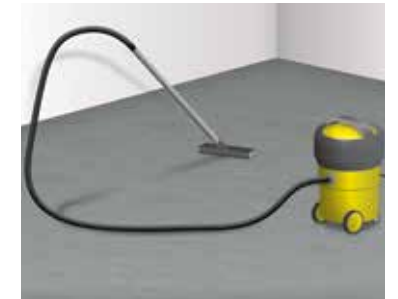
1 Load-bearing wall substrate



2 Cleaning the wall substrate



3 Load-bearing floor substrate



4 Cleaning the floor substrate



5 ASO®-Unigrund-K, suitable tools



6 Dilution of ASO®-Unigrund-K dependent on the absorption of the substrate



7 Priming the wall substrate



8 Priming the floor substrate



9 Completed primed substrate

