



One product for all applications

40 years of experience in cementitious waterproofing slurries

In the 1990s, SCHOMBURG introduced the first cementitious thick layer coating. The essence of 40 years of experience with cementitious waterproofing systems and thick layer coatings is incorporated in **AQUAFIN-RB400**.

The result is rapid, cementitious construction waterproofing that leaves no wishes unfulfilled. Because it is the right choice for every application. In new and existing buildings. In outdoor and indoor applications. With manual and mechanical application.

Whatever you wish to waterproof – moisture does not stand a chance with **AQUAFIN-RB400**.

Areas of application

- In new and existing buildings.
- Outdoor and indoor waterproofing.
- Waterproofing in direct ground, plinth waterproofing and transverse waterproofing in and below walls in accordance with DIN 18533 for water impact classes W1-E, W1.2-E and W4-E.
- Subsequent waterproofing in accordance with WTA Leaflet 4-6 against soil moisture, non pressure water and pressure water (with suitable construction).
- Waterproofing of containers and tanks.
- Connection of floor-deep elements (proven watertight).

Properties

- Rapid reactive drying, almost climate-independent.
- Layer thickness of 2 to 4 mm.
- Overcoat after approx. 3 hours.
- Very low drying loss.
- Responsible for damp substrates without primers.
- Two-component.
- Multi-functional.
- Seam-free and jointless.
- Hydraulic, self-cross-linking setting.
- Highly flexible and crack bridging.
- Suitable for all load-bearing, conventional substrates.
- Sulfate resistant.
- Resistant to de-icing salts.
- Resistant to frost, UV and ageing.

Technical data

Pot life*	approx. 45 minutes
Overcoat after*	after approx. 3 hours
Application/ substrate temperature	+5 °C to +30 °C
Application	Hand, machine
Material consumption rate	1.2 kg/m ² /mm
Packaging	24 kg combination container 32.5 kg combination container

* The data applies to +23 °C / 50% relative humidity.

Advantages for the user

Reactive drying, weather-independent

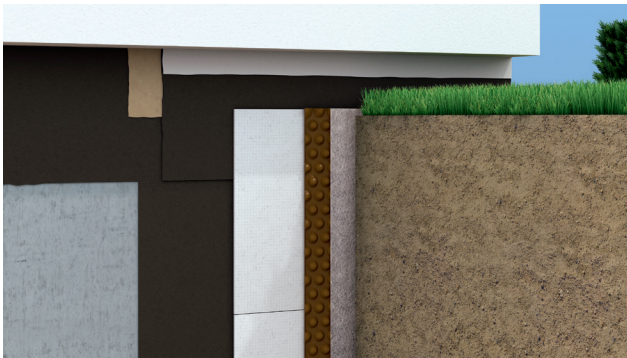
Very low drying loss

Overcoat after 3 hours

A product for all applications

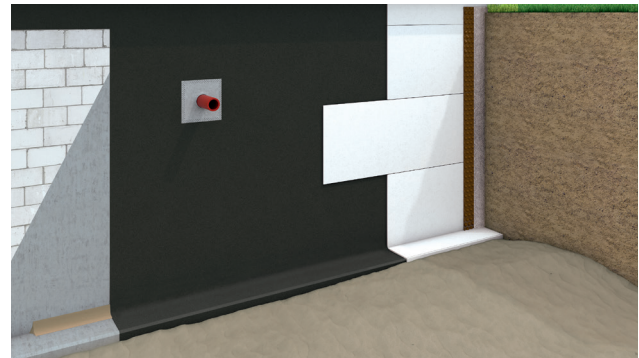


Von Abdichtung im Sockelbereich über Kellerabdichtungen bis hin zu bodentiefen Elementen. Auf aquafin.de bietet SCHOMBURG das passende Lösungssystem an.



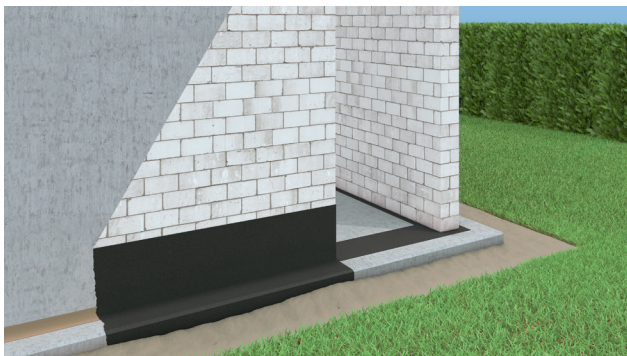
1. Plinth waterproofing

Particularly suitable as waterproofing against splash water in the plinth area in accordance with DIN 18533-3. The advantage is that no material change is required with surface and plinth waterproofing and the material can be plastered over and painted.



2. Waterproofing in direct ground

As waterproofing in direct ground against non pressure water and pressure water in new buildings (separate agreement required against pressure water) in accordance with DIN 18533-3 and in restoration works in accordance with WTA Leaflet 4-6 and as interior seal.



3. In and below walls

Applicable as a horizontal barrier beneath rising back-up masonry work in accordance with DIN 18533-3.



4. Floor-deep elements

Proven watertight connection with floor-deep elements made of wood and plastic, in combination with highly elastic joint tapes of the ASO joint tape series.

The SCHOMBURG group of companies develops, produces and distributes construction materials systems for the areas of:

- Waterproofing and Restoration
- Tiles/Natural Stone/Screed installation
- Protective Flooring/Coating Systems

SCHOMBURG is recognised for its development competency and is distinguished both nationally and internationally with over 80 years in the market. System based construction products from its own production plants are held in high esteem throughout the world.

Industry professionals value the level of service provided by the SCHOMBURG Group, along with our large range of high quality products.

In order to stay at the forefront of a continuously advancing market we are always investing in research and development of new and current products. This guarantees high quality products, which in turn leads to customer satisfaction.

SCHOMBURG GmbH & Co. KG
Aquafinstraße 2 – 8
D-32760 Detmold (Germany)
phone +49-5231-953-00
fax +49-5231-953-108
email export@schomburg.de
www.schomburg.com

