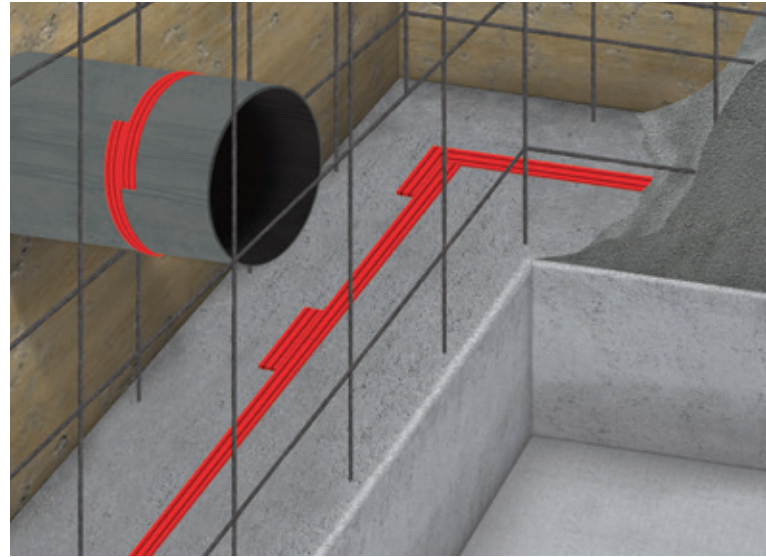


Secure and simple waterproofing of construction joints with expanding elastomeric joint strips



Subject to changes. Consult current Technical Data Sheet for most recent information.

 **SCHOMBURG**

AQUAFIN®-CJ6

SCHOMBURG GmbH & Co. KG
Aquafinstrasse 2-8
D-32760 Detmold, Germany
phone +49-5231-953-00
fax +49-5231-953-108
email export@schomburg.de
www.schomburg.com



02/16-SF/CoS/JD

 **SCHOMBURG**



AQUAFIN®-CJ6...

...is used for waterproofing the inner side of concrete construction joints where there is constant or intermittent exposure to ground water, run-off water and/or surface water.

AQUAFIN®-CJ6 is suitable for riparian zones.

Construction joints can be sealed watertight to a depth of 8 m.

The surface and grooved profile permits a particularly easy and secure application, which interlocks well with the concrete.

Thermoplastic expansive waterstop for waterproofing construction joints

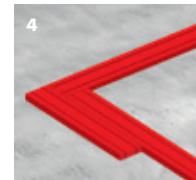
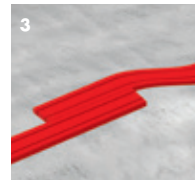
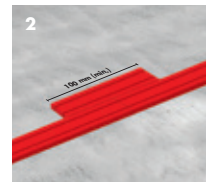
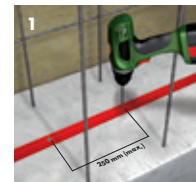
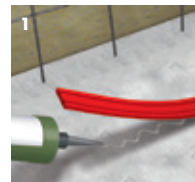
Properties/Advantages:

- Simple application
- Rapid and strong expansion (> 850% after 8 days)
- Completely dimensionally stable even at high temperatures
- Swelling process inexhaustible, often reversible
- Suitable for fresh water and sea water applications
- General technical approval certificate available
- No fouling of formwork or reinforcement possible

Application:

1. Bonding using a mounting adhesive or with mechanical fixings
2. Butt joints
3. Overlapping joints
4. Corner joints

Please observe the current Technical Data Sheet.



Packaging: 40 m / roll x 5 per box

**Our competency –
your advantage!**