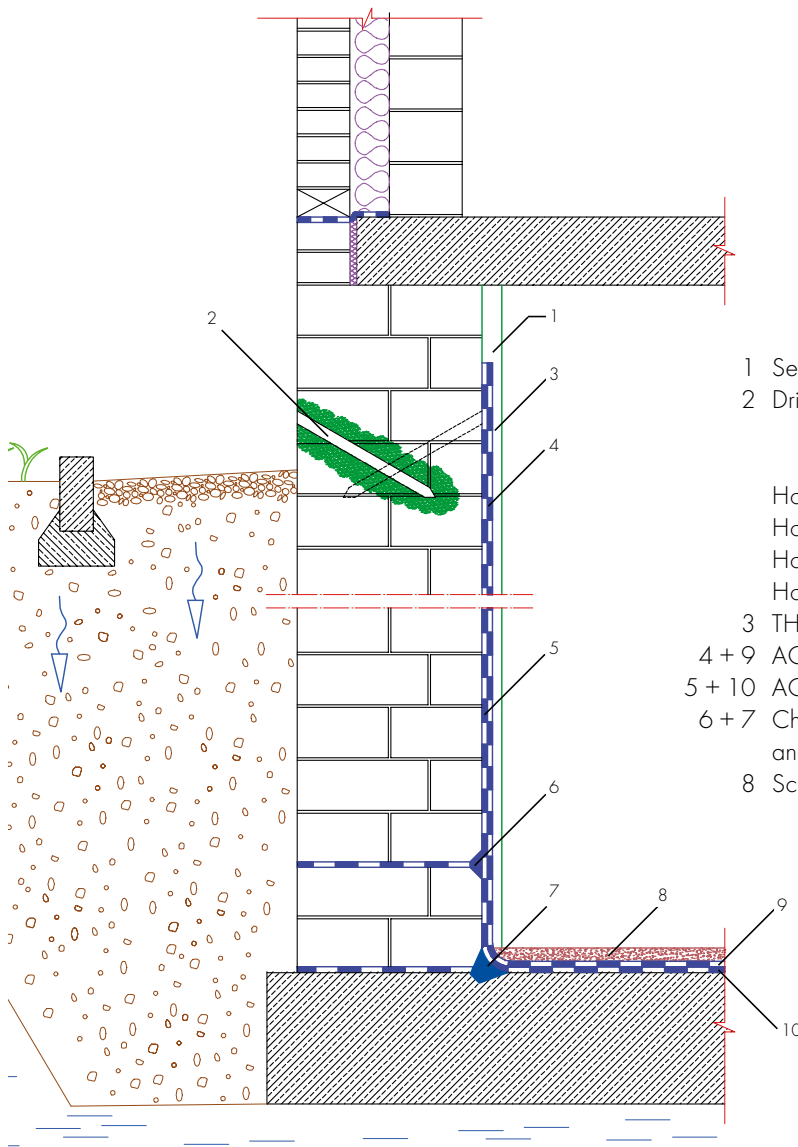


### Retrospective inner waterproofing



- 1 Semi-covering THERMOPAL-SP splatterdash coat
- 2 Drill hole seal with AQUAFIN-F or AQUAFIN-i380  
 process without low pressure  
 any pressure process  
 Hole diameter: 30 mm 12 or 18 mm  
 Hole angle: 30°-45° 0°-30°  
 Hole depth: Masonry work ./ .5 cm  
 Hole spacing: ≤ 12.5 cm ≤ 12.5 cm
- 3 THERMOPAL-ULTRA restoration plaster
- 4 + 9 AQUAFIN-2K/M-PLUS or AQUAFIN-RS300
- 5 + 10 AQUAFIN-1K
- 6 + 7 Chisel out existing pulp liner in 2/2 cm grooves  
 and apply stiff plastic ASOCRET-M30
- 8 Screed created from ASO-EZ2