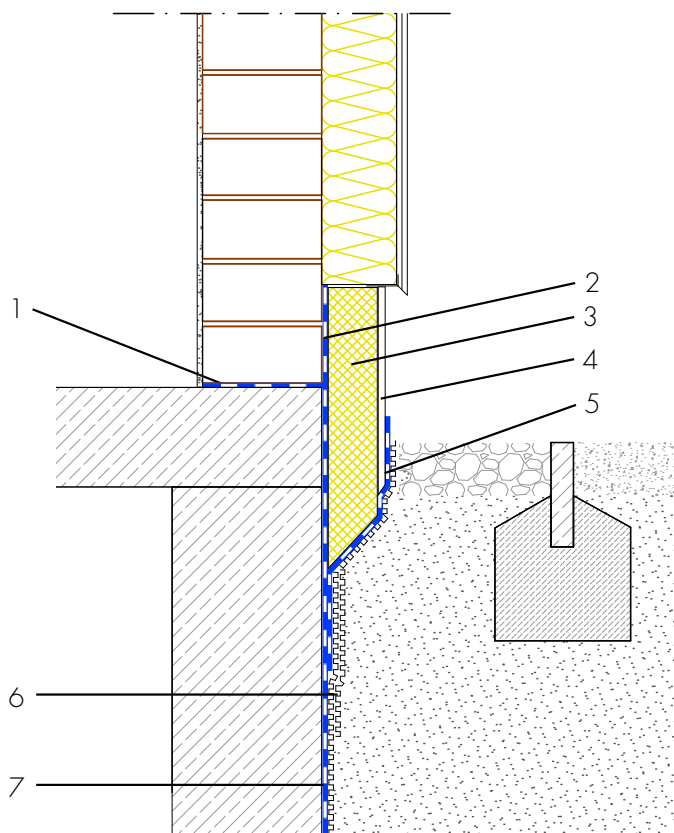


## Restoration skirting waterproofing, concrete basement with frost apron

Single-shell masonry with composite thermal insulation system



- 1 Horizontal barrier under walls - present  
- Protection from capillary rising water
- 2 Waterproofing from spray water at the wall skirting - AQUAFIN-RB400 -  
Protection of the building envelope from damp and foreign matter
- 3 Protection of the waterproofing -  
Insulation, protection and drainage boards - Protects the waterproofing from damage
- 4 Building skirt render - ASOCRET-M30  
- Protection of the waterproofing from damage and visual design of the building skirt area
- 5 Moisture protection - AQUAFIN-RB400  
- Protection of the building skirt render from water penetration from behind
- 6 Protection of the waterproofing -  
Insulation, protection and drainage boards - Protects the waterproofing from damage
- 7 Building waterproofing in contact with the ground - AQUAFIN-RB400 - Two-layer waterproofing to protect the building envelope from moisture and water