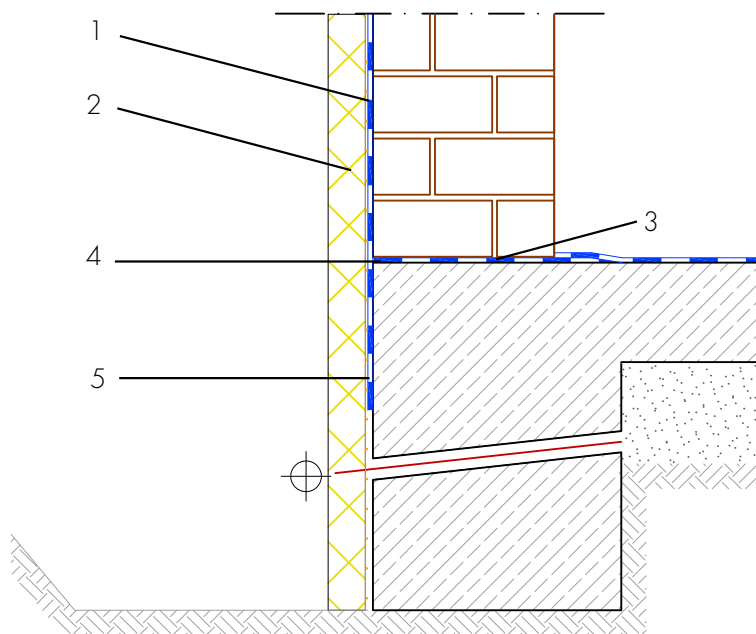


New build basement waterproofing, base point, protruding floor slab

Single-shell masonry



- 1 Building waterproofing in contact with the ground - AQUAFIN-RB400 - Two-layer waterproofing to protect the building envelope from moisture and water
- 2 Protection of the waterproofing - Insulation, protection and drainage boards - Protects the waterproofing from damage
- 3 Horizontal barrier under walls - AQUAFIN-RB400 - Protection from capillary rising water
- 4 Transition to concrete structure - ASO-reinforcing-insert - Reinforcement of the waterproofing in the transition area between masonry and concrete
- 5 Waterproofing on front side of floor slab - AQUAFIN-RB400 - Waterproofing the front side of the floor slab/foundations to safeguard the transition to the wall material