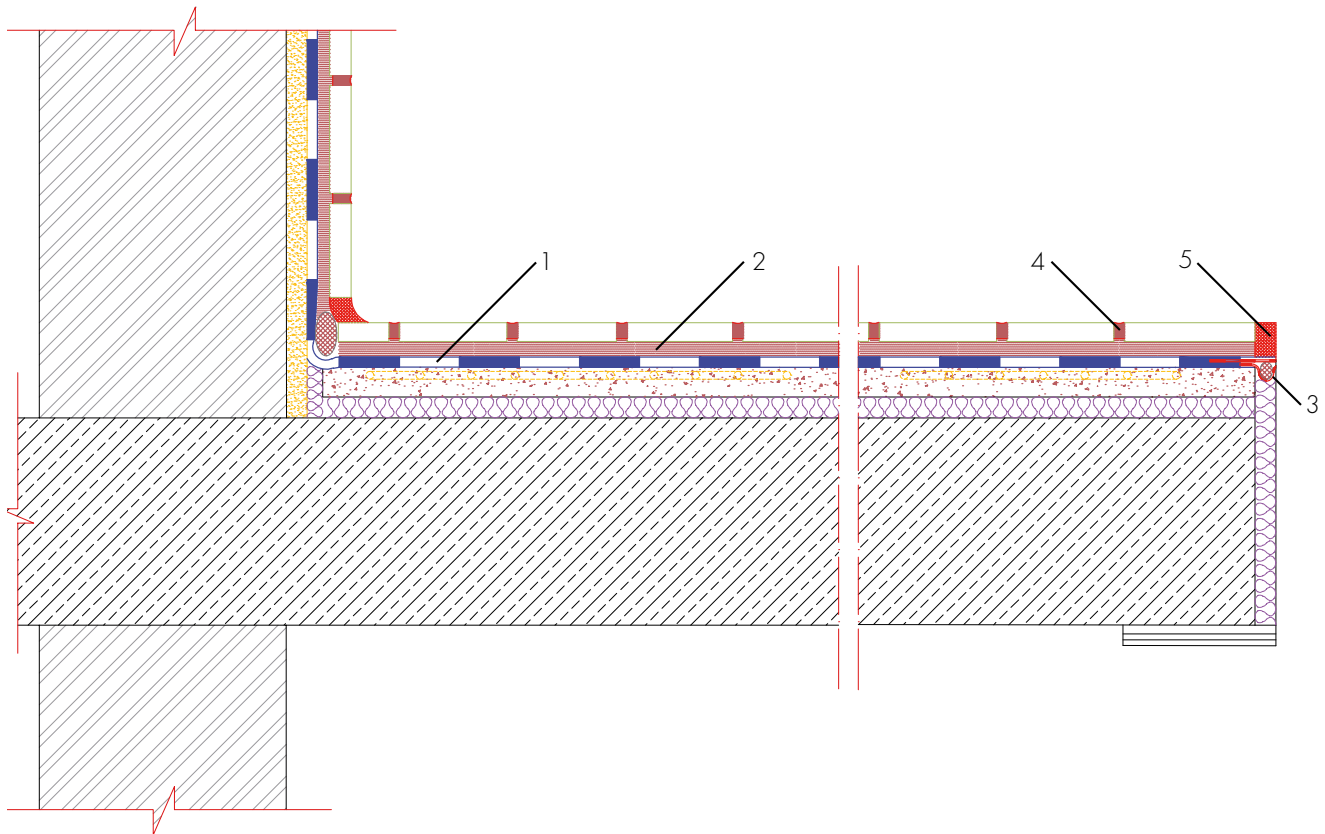


## Floor heating system for swimming pool surrounds (Thin-bed)

Wear class A and water impact classes W0-I to W3-I



- 1 Waterproofing with AQUAFIN-2K/M-PLUS / AQUAFIN-RS300
- 2 Tile adhesion with UNIFIX-S3 or SOLOFLEX
- 3 ASO-Joint-Tape-2000-S and ASO-Joint-Tape-2000 for protection
- 4 Grouting with ASODUR-DESIGN / HF05-Brillantfuge
- 5 ESCOSIL-2000-UW elastic sealing