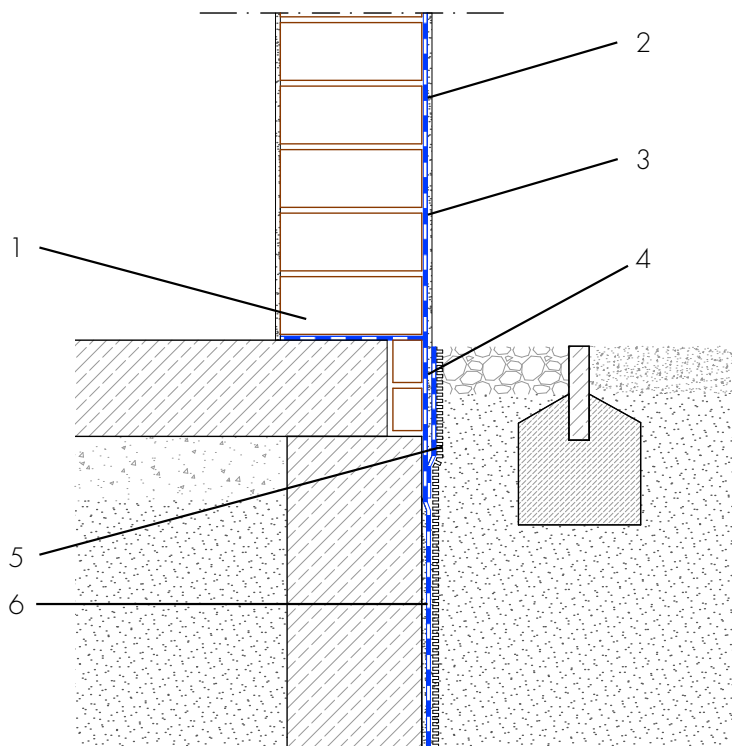


Technical Drawing 2.1.6

Restoration skirting waterproofing, concrete basement and plinth with building skirt render

Single-shell masonry, plastered



- 1 Horizontal barrier under walls - present
- Protection from capillary rising water
- 2 Building skirt render - ASOCRET-M30
- Protection of the waterproofing from damage and visual design of the building skirt area
- 3 Waterproofing from spray water at the wall skirting - AQUAFIN-RB400 -
Protection of the building envelope from damp and foreign matter
- 4 Protection of the waterproofing -
Insulation, protection and drainage boards - Protects the waterproofing from damage
- 5 Moisture protection - AQUAFIN-RB400
- Protection of the building skirt render from water penetration from behind
- 6 Building waterproofing in contact with the ground - AQUAFIN-RB400 - Two-layer waterproofing to protect the building envelope from moisture and water