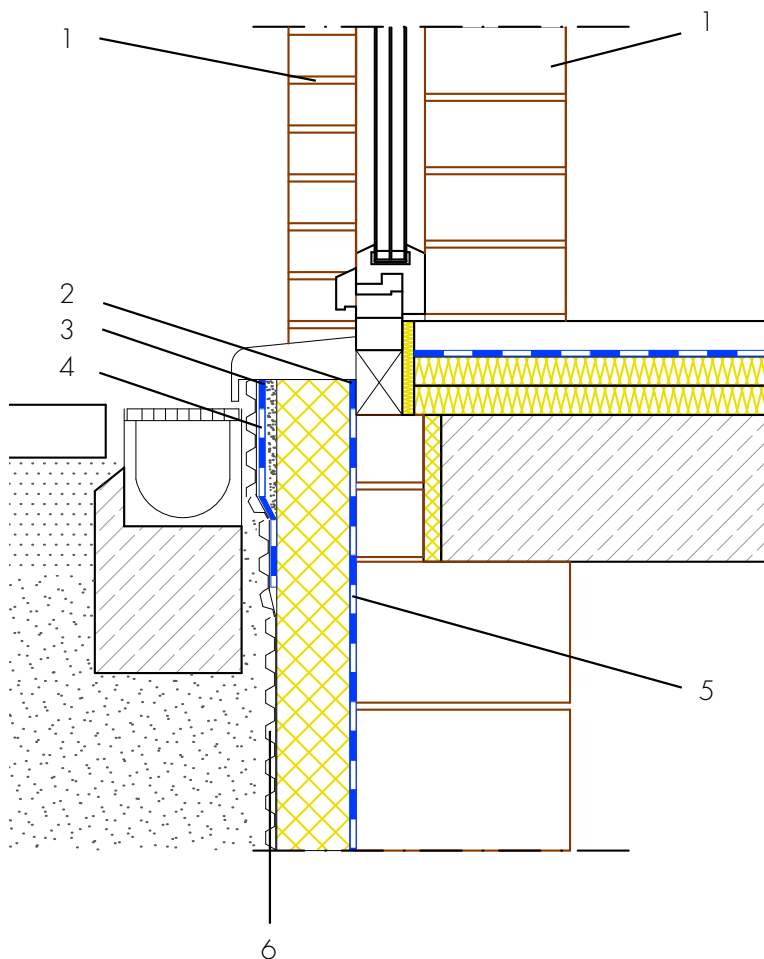


Ground-level element

Double-shell masonry



- 1 Back brickwork/front wall shell
- 2 Connection of ground-level element - ASO-Joint-Tape-2000-Sanitary - connection of the ground-level element to the building waterproofing with a joint tape with self-adhesive strip
- 3 Building skirt render - ASOCRET-M30 - Protection of the waterproofing from damage and visual design of the building skirt area
- 4 Moisture protection - AQUAFIN-RB400 - Protection of the building skirt render from water penetration from behind
- 5 Building waterproofing in contact with the ground - AQUAFIN-RB400 - Two-layer waterproofing to protect the building envelope from moisture and water
- 6 Protection of the waterproofing - Insulation, protection and drainage boards - Protects the waterproofing from damage