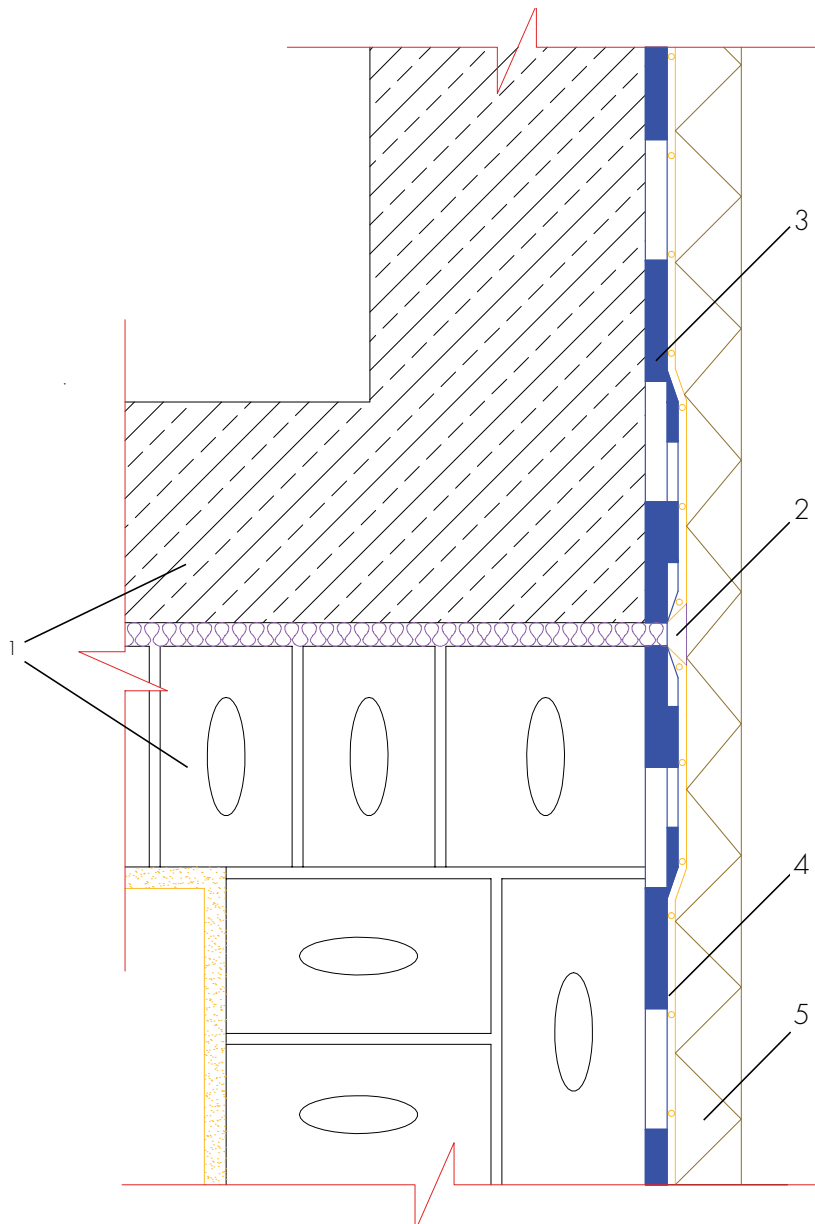


## **Movement joint waterproofing in a continuous bottom slab with COMBIFLEX®-High Build System**

– According to factory specifications –



- 1 Masonry or reinforced concrete
- 2 Waterproofing in joint area with a flexible slurry and a suitable SCHOMBURG-Joint-Tape (see technical data sheet)
- 3 Waterproofing with COMBIFLEX-High Build System
- 4 ASO-Systemvlies-02 protective mesh
- 5 Waterproofing protection layer through suitable measures