



# Technical Drawings

Concrete construction waterproofing system



## Planning details in the waterproofing system for concrete construction

SCHOMBURG offers its customers a comprehensive range of sealing solutions. From cementitious mineral and bituminous waterproofing to integral crystalline waterproofing of concrete building components and membrane waterproofing, for example with fresh concrete composite systems.

In terms of cost-effectiveness and the improvement in building component properties the integral concrete waterproofing with the crystalline concrete admixture BETOCRETE certainly stands out. When using BETOCRETE products the cracks in a "watertight" concrete can grow closed due to the increased and accelerated crack healing ability on contact with water. In addition, the concrete becomes "more resistant" to attacks from the environment and the service life of the concrete building component is noticeably extended.

The following drawings provide assistance in the use of the fresh concrete bonded waterproofing membrane and in the use of the waterproofing accessories.



## Content

### Expansion joints / Construction joint

<b>ASO®-Tape</b>			
4	Expansion joint, wall		1.5.1.1.10
5	Construction joint, wall / slab	Retrospective execution	1.5.1.1.11
<b>AQUAFIN®-CJ6</b>			
6	Construction joint, wall / slab	Flush slab	1.5.1.1.11
7	Construction joint, wall / slab	Protruding floor slab	1.5.1.1.11
<b>AQUAFIN®-CJ1</b>			
8	Protection of construction joint with swellable waterstop tape	Flush floor slab	1.5.1.1.11
9	Protection of construction joint with swellable waterstop tape	Protruding floor slab	1.5.1.1.11
<b>AQUAFIN®-CJ5</b>			
10	Construction joint, wall / slab	Flush floor slab	1.5.1.1.11
11	Construction joint, wall / slab	Protruding floor slab	1.5.1.1.11

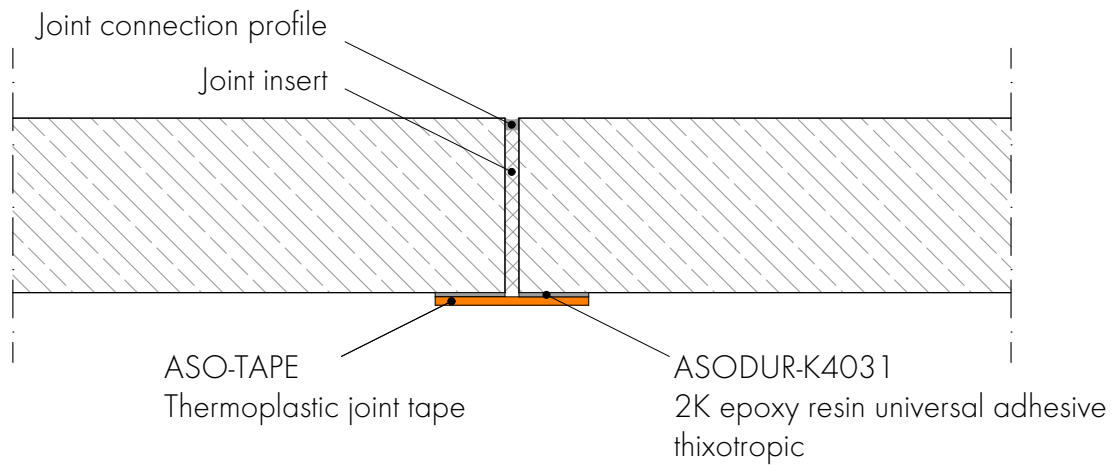
### Green concrete waterproofing system

<b>AQUAFIN®-WM12 / Surface area</b>			
12	Membrane joint, floor		1.5.2.1.10
13	Expansion joint, floor		1.5.2.1.11
14	Horizontal construction joint		1.5.2.1.12
15	Installation against trench		1.5.2.1.13
16	Spread, wall		1.5.2.1.14
<b>AQUAFIN®-WM12 / Penetrations</b>			
17	Integration of bored pile, flush		1.5.2.2.11
18	Integration of bored pile		1.5.2.2.12
19	Pipe penetration, wall		1.5.2.2.13
20	Pipe penetration, floor slab		1.5.2.2.14
21	Anchor, lightning protection		1.5.2.2.15
<b>AQUAFIN®-WM12 / Wall/Floor</b>			
22	Connection to existing building structure		1.5.2.3.10
23	Floor/wall transition	Protruding floor slab	1.5.2.3.11
24	Wall installation with AQUAFIN®-RB400	Protruding floor slab	1.5.2.3.12
25	Floor/wall transition	Flush floor slab	1.5.2.3.13



**Technical Drawing 1.5.1.1.10**

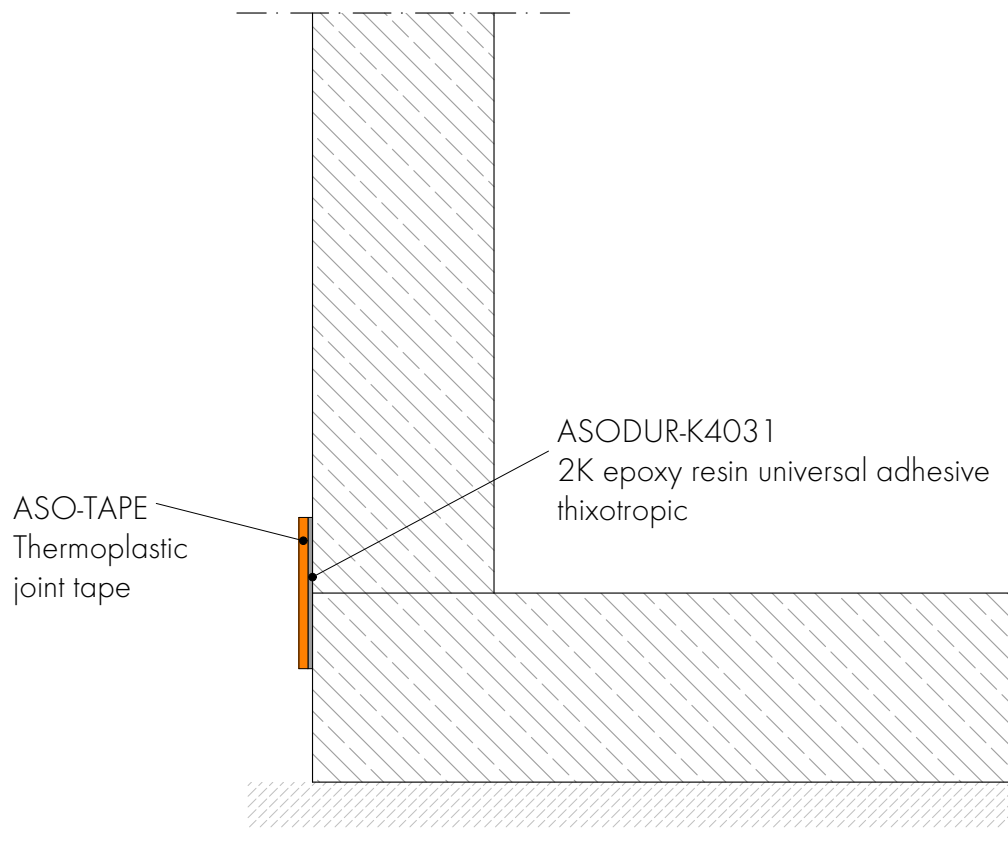
Thermoplastic joint tape  
**Expansion joint, wall**  
Retrospective execution



Overlap area ASO-TAPE / watertight concrete  
>5cm up to 2bar and >20cm with water pressure 2 to 5bar



Thermoplastic joint tape  
**Construction joint, wall / slab**  
Retrospective execution



Overlap area ASO-TAPE / watertight concrete  
>5cm up to 2bar and >20cm with water pressure 2 to 5bar

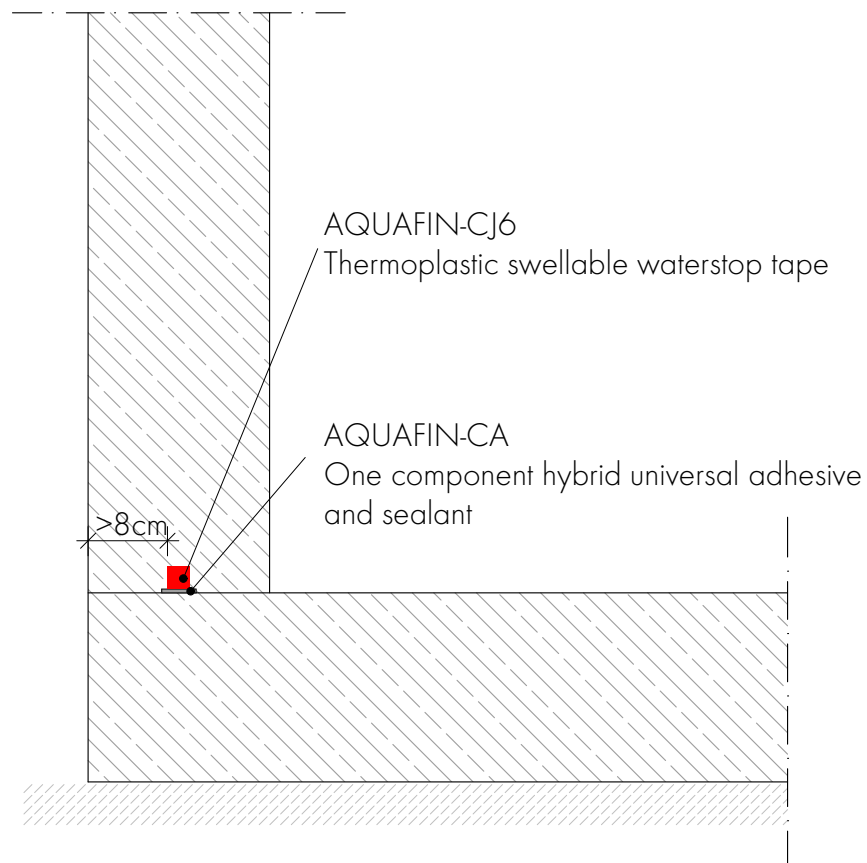


**Technical Drawing 1.5.1.2.10**

AQUAFIN®-CJ6 Thermoplastic swellable waterstop tape

**Construction joint, wall / slab**

Flush slab

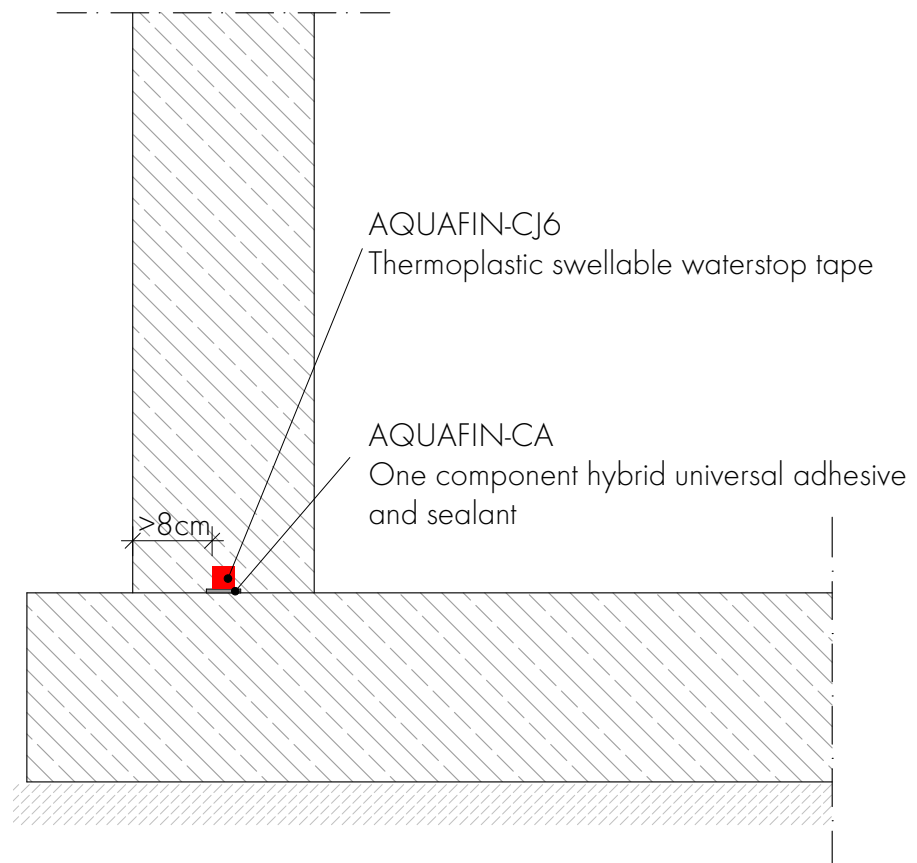




AQUAFIN®-CJ6 Thermoplastic swellable waterstop tape

## Construction joint, wall / slab

Protruding floor slab



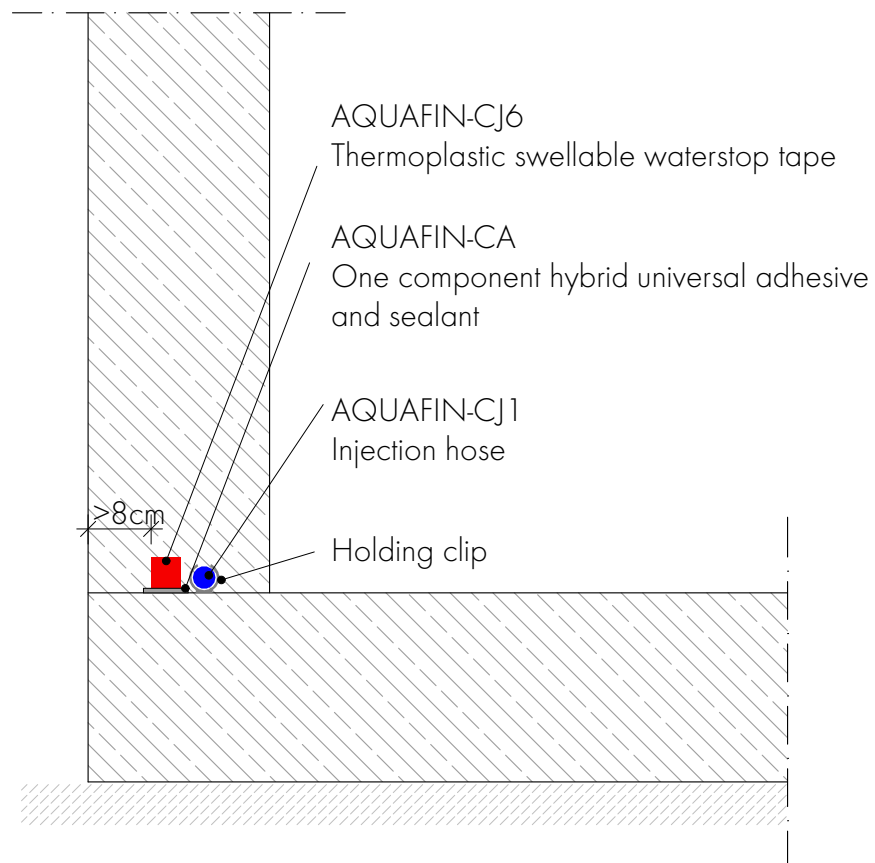


**Technical Drawing 1.5.1.3.10**

AQUAFIN®-CJ1 Injection hose

**Protection of construction joint with swellable waterstop tape**

Flush floor slab



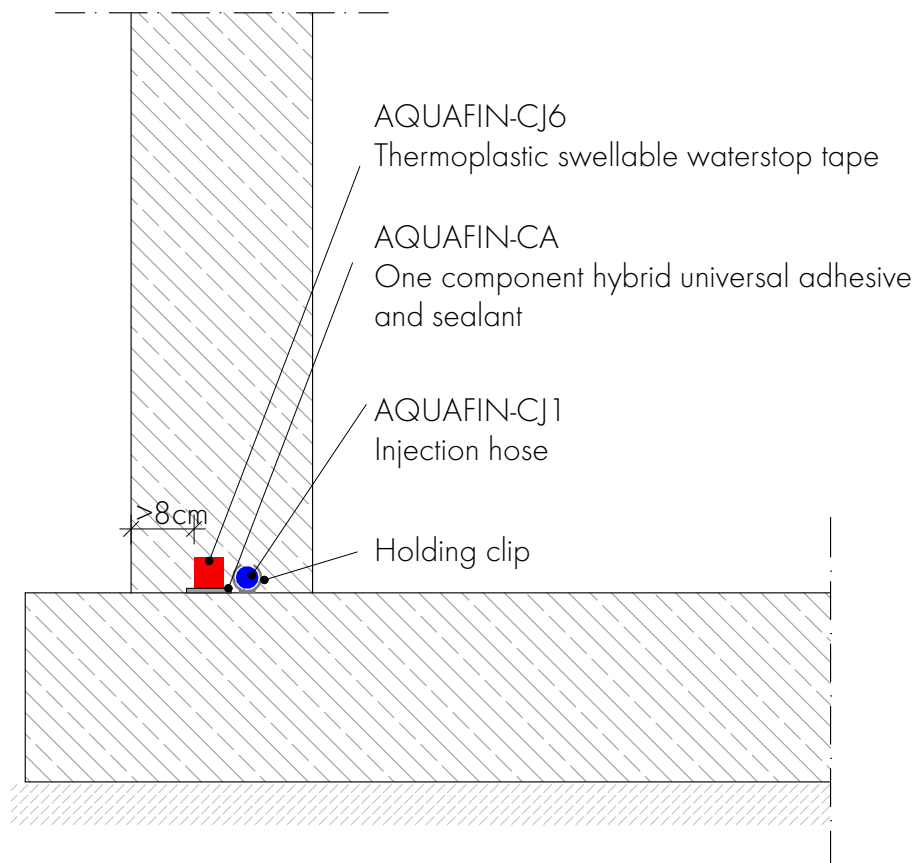




AQUAFIN®-CJ1 Injection hose

## Protection of construction joint with swellable waterstop tape

Protruding floor slab



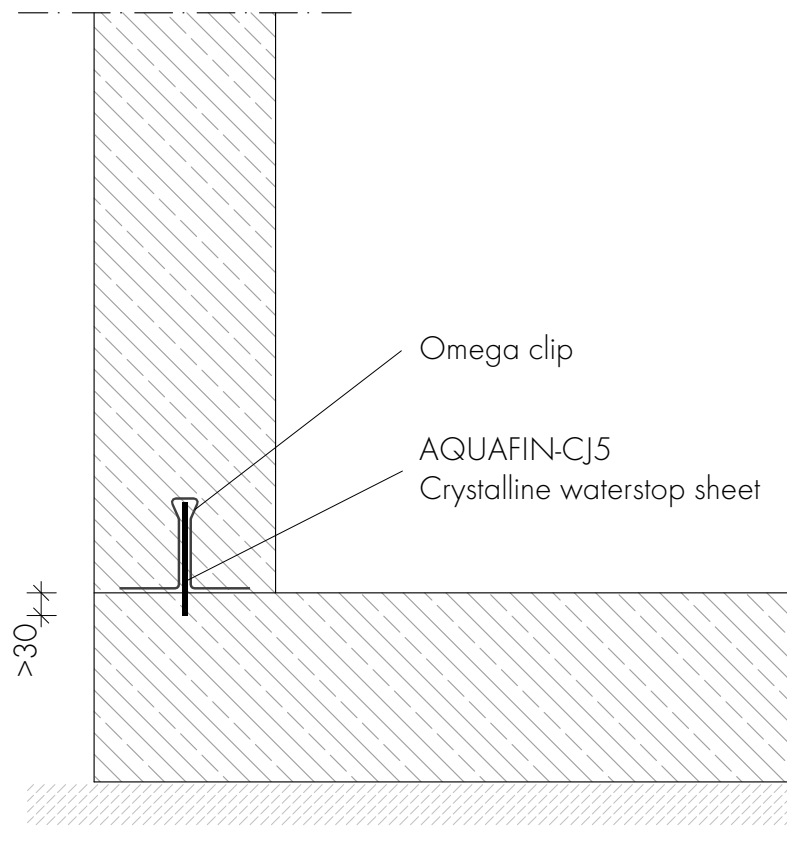


**Technical Drawing 1.5.1.4.10**

AQUAFIN®-CJ5 Crystalline waterstop sheet

**Construction joint, wall / slab**

Flush floor slab

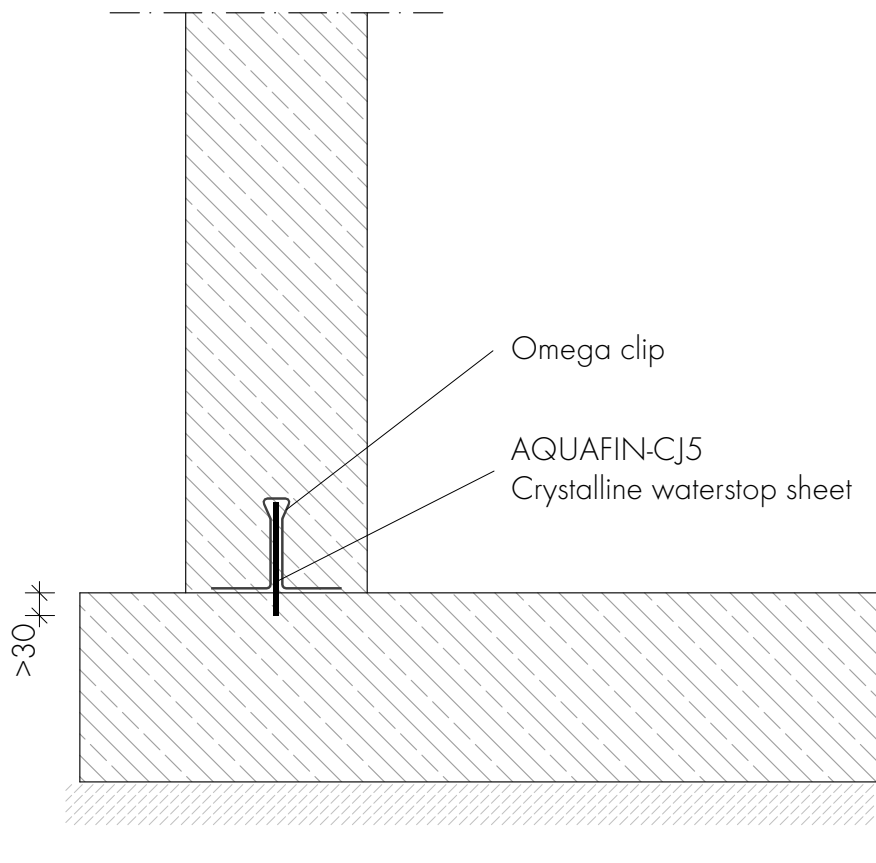




AQUAFIN®-CJ5 Crystalline waterstop sheet

**Construction joint, wall / slab**

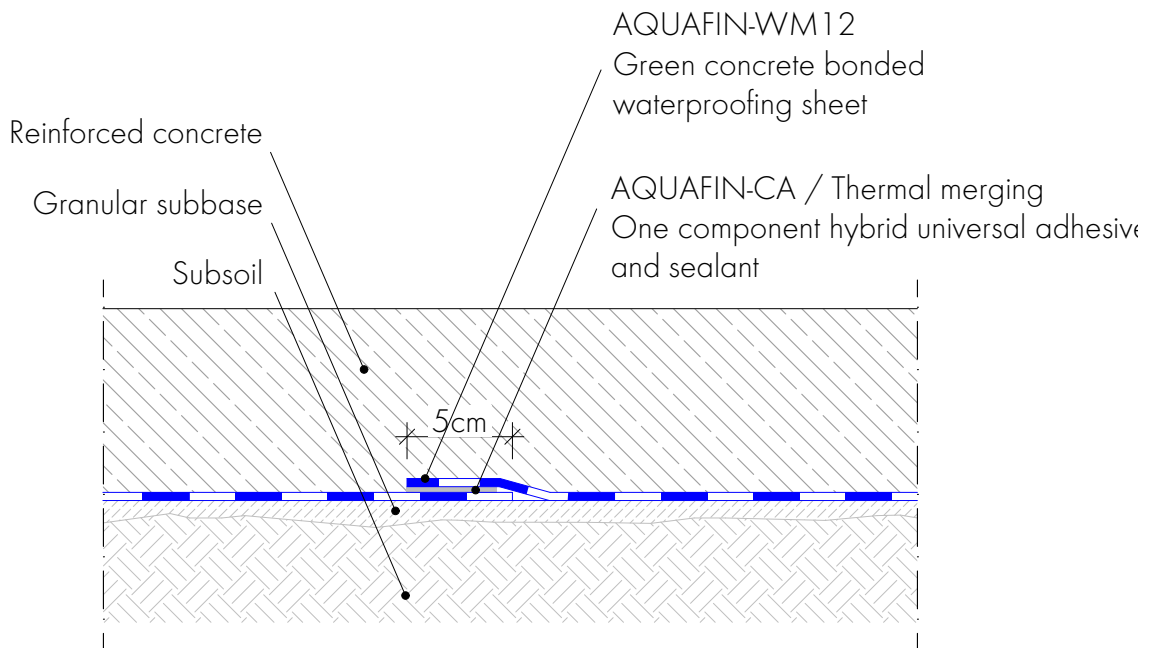
Protruding floor slab





**Technical Drawing 1.5.2.1.10**

AQUAFIN®-WM12 Green concrete bonded waterproofing sheet  
**Membrane joint, floor**

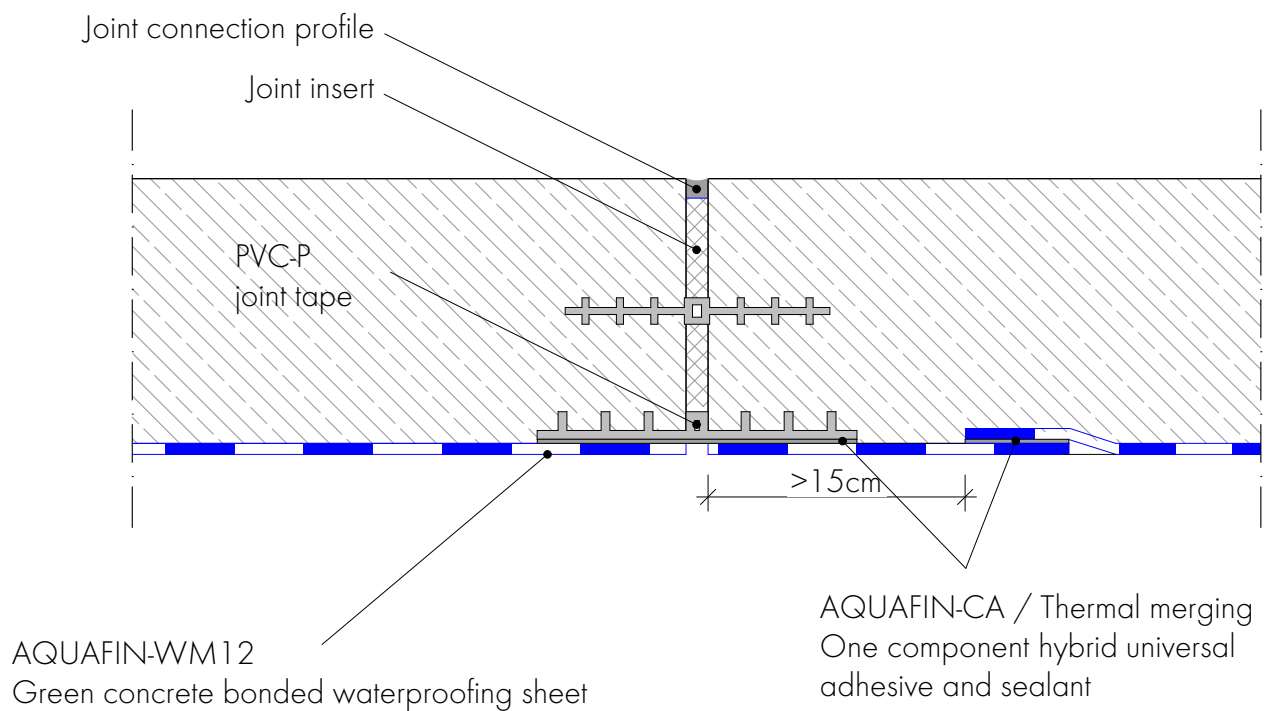


Overlap area thermal merging / bonding >4cm



# AQUAFIN®-WM12 Green concrete bonded waterproofing sheet

## Expansion joint, floor

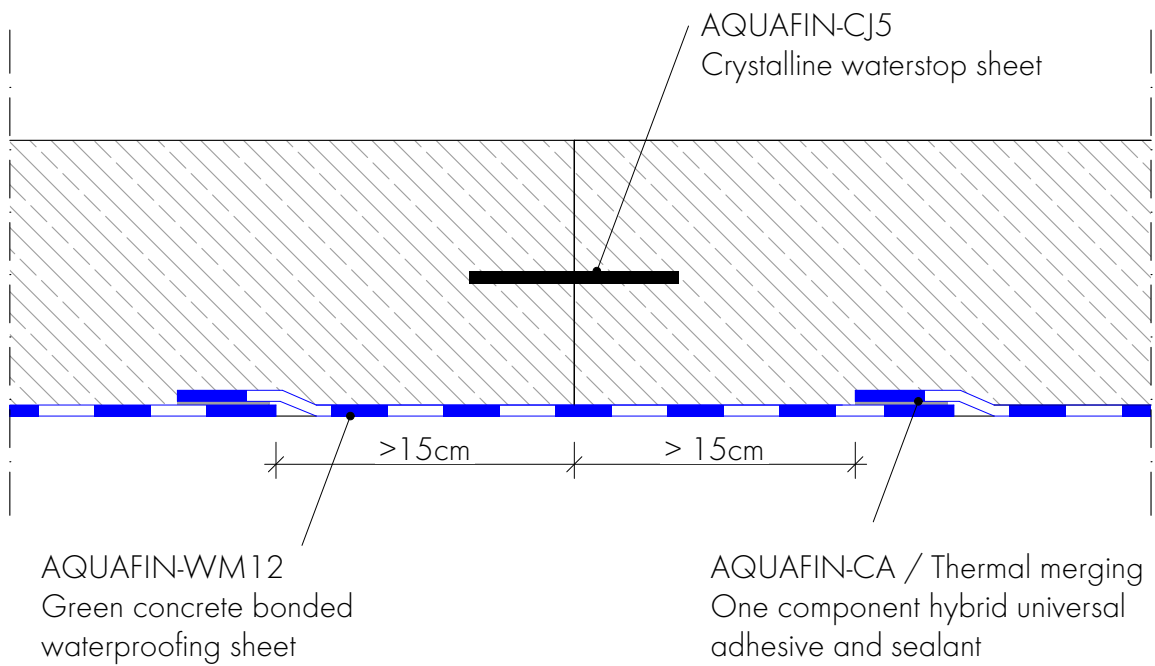


Thermal merging / bonding in the overlapping area >4cm



**Technical Drawing 1.5.2.1.12**

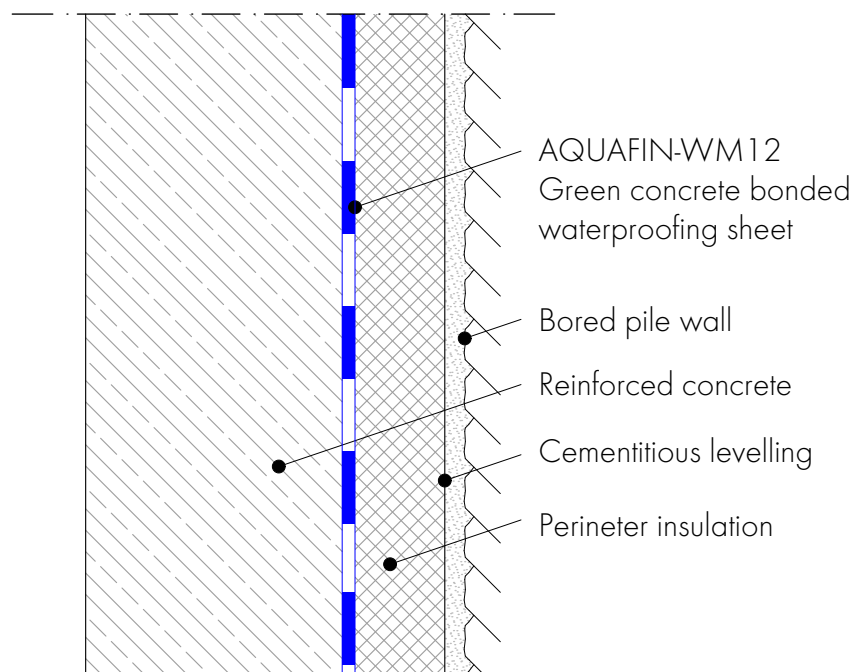
AQUAFIN®-WM12 Green concrete bonded waterproofing sheet  
**Horizontal construction joint**



Thermal merging / bonding in the overlapping area >4cm



## AQUAFIN®-WM12 Green concrete bonded waterproofing sheet Installation against trench

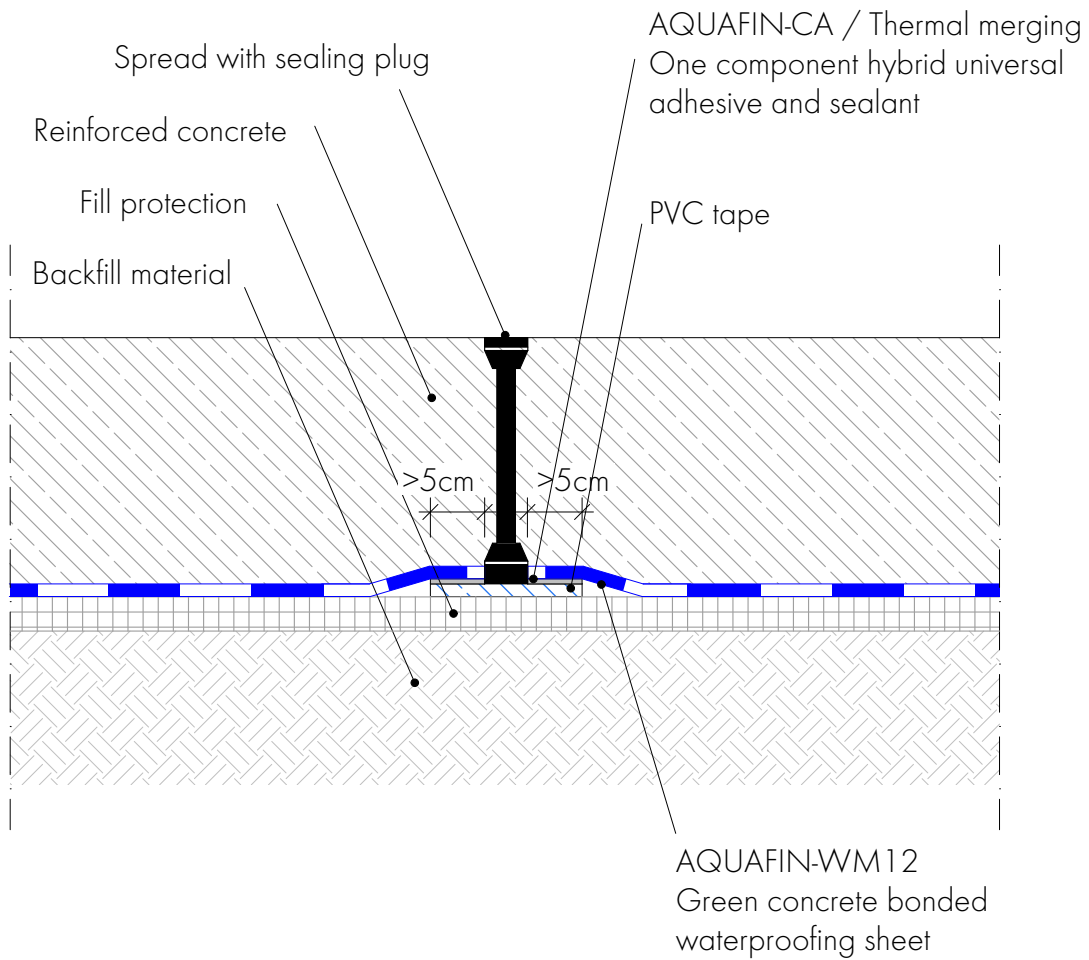




Technical Drawing 1.5.2.1.14

# AQUAFIN®-WM12 Green concrete bonded waterproofing sheet

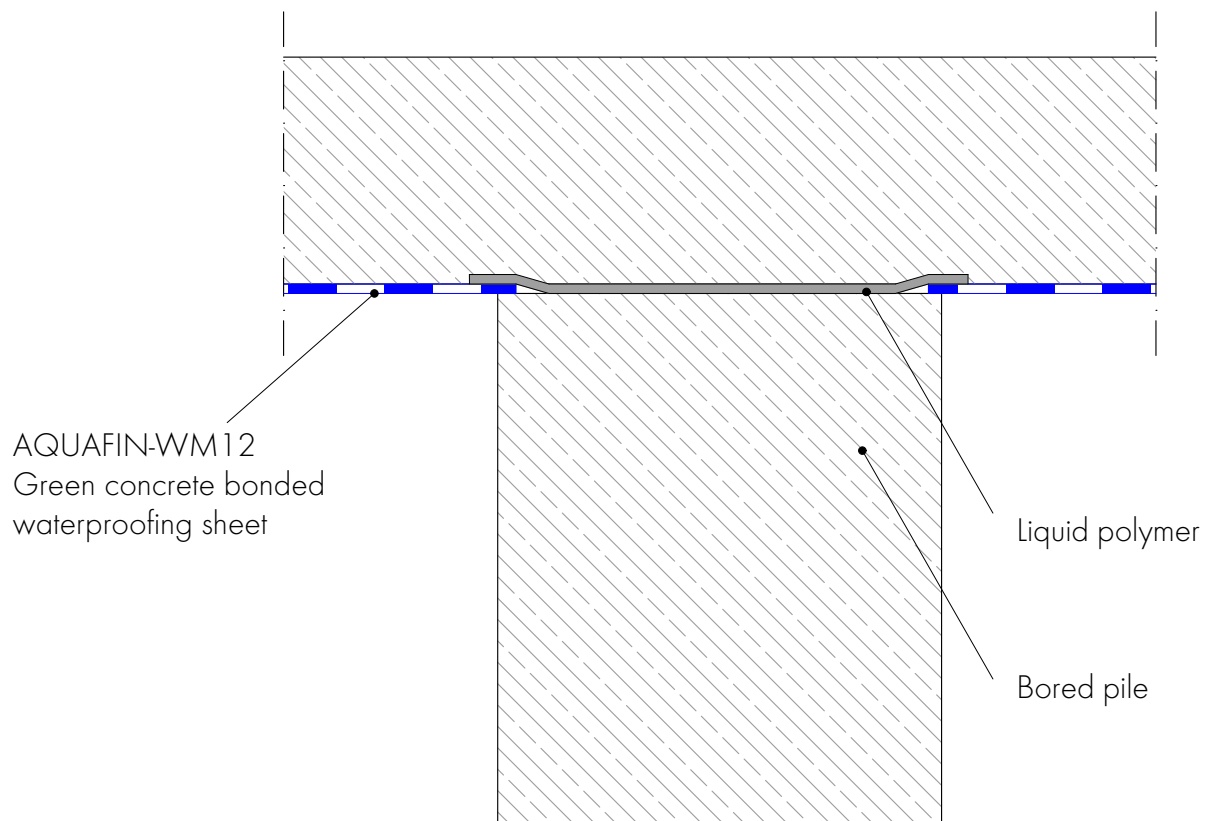
## Spread, wall







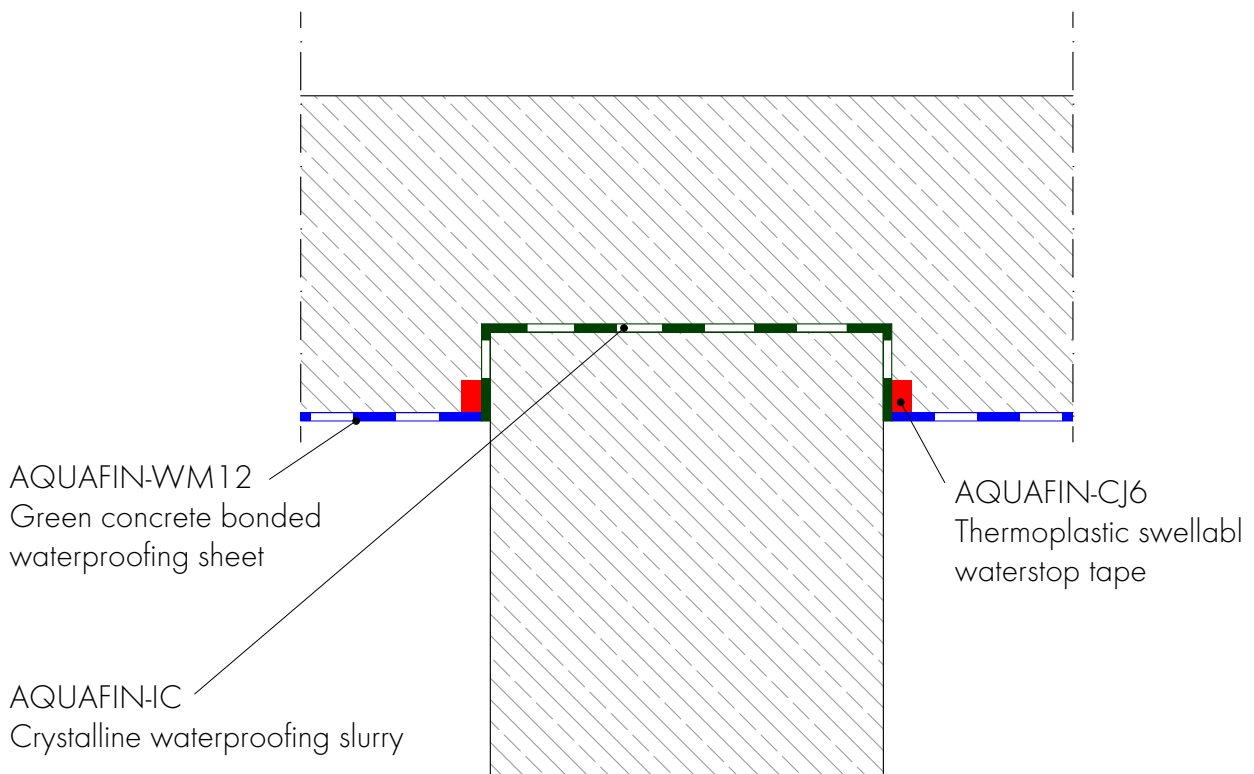
## AQUAFIN®-WM12 Green concrete bonded waterproofing sheet Integration of bored pile, flush





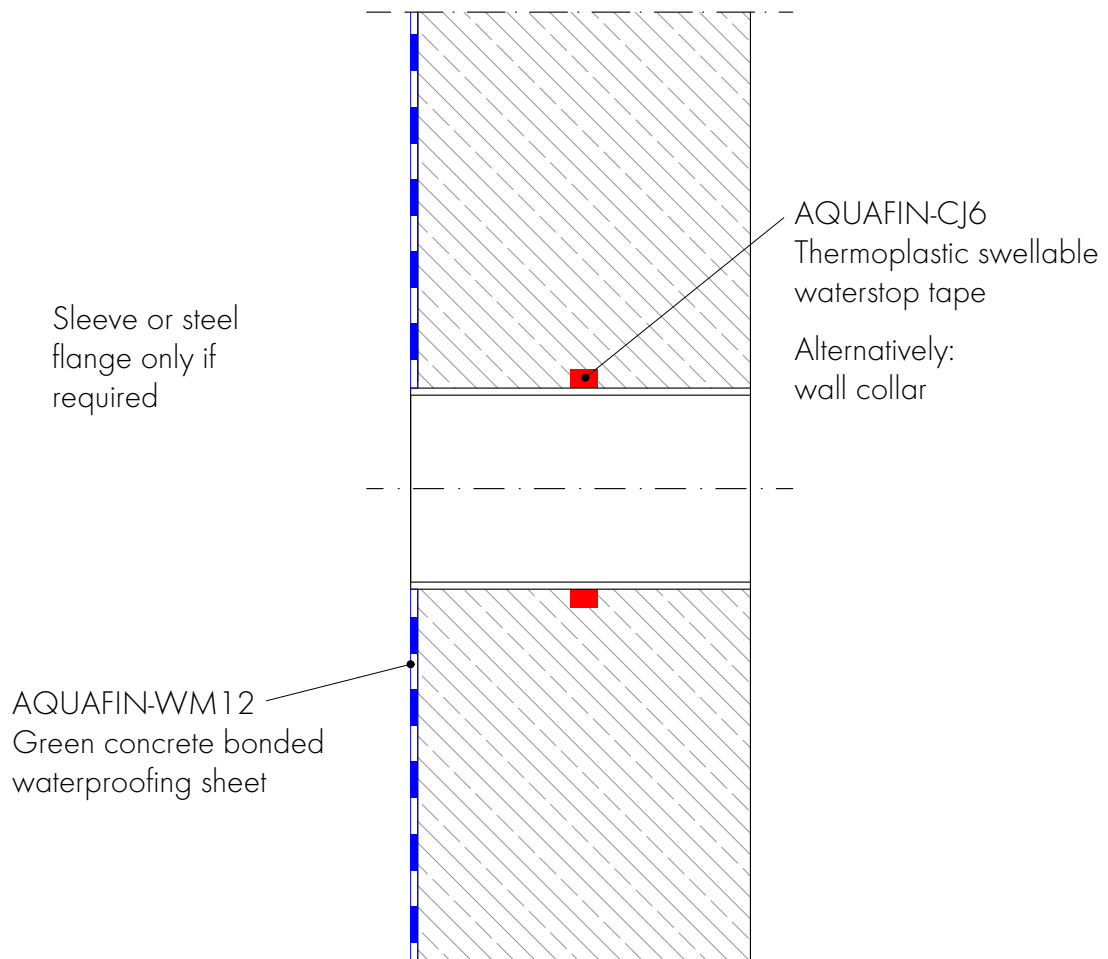
**Technical Drawing 1.5.2.2.12**

AQUAFIN®-WM12 Green concrete bonded waterproofing sheet  
**Integration of bored pile**





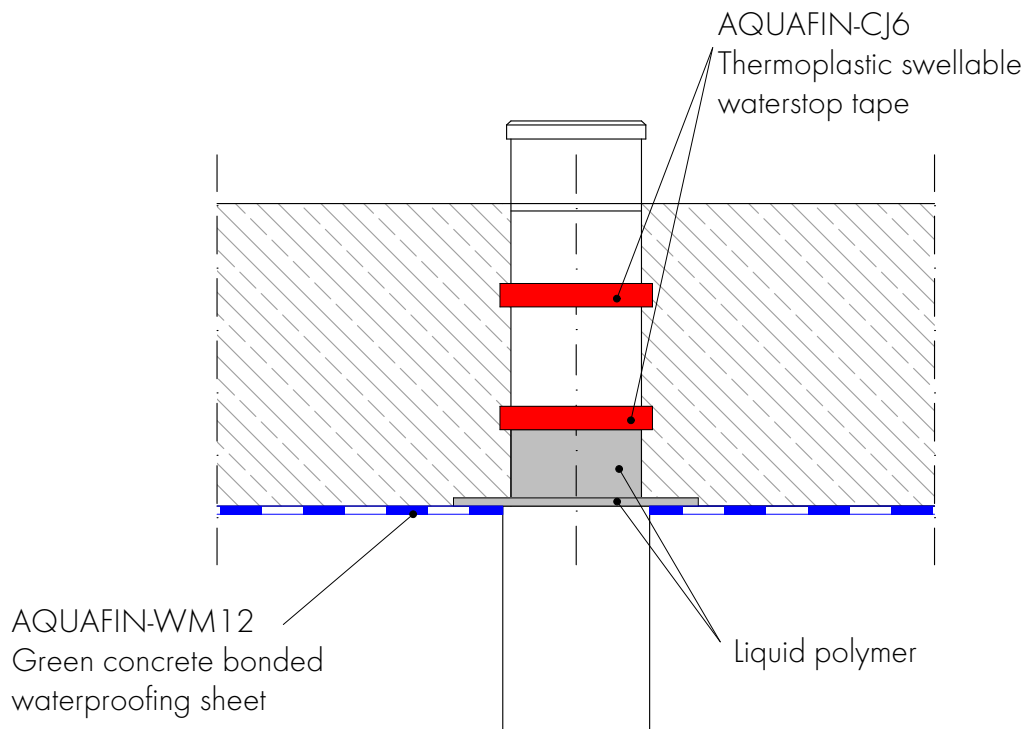
## AQUAFIN®-WM12 Green concrete bonded waterproofing sheet **Pipe penetration, wall**





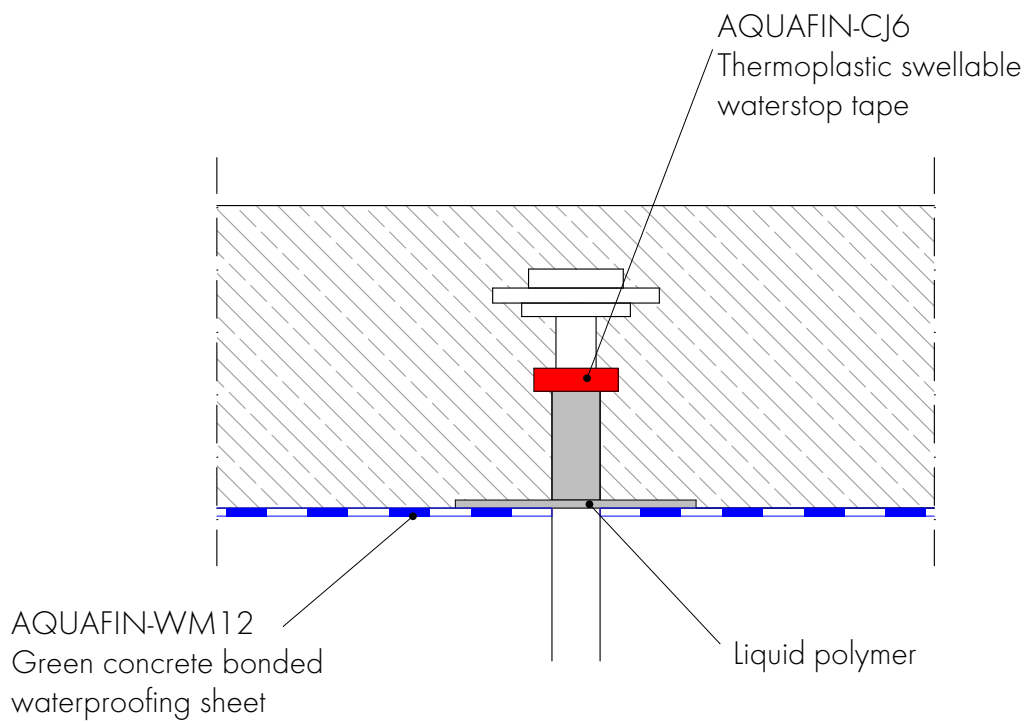
**Technical Drawing 1.5.2.2.14**

AQUAFIN®-WM12 Green concrete bonded waterproofing sheet  
**Pipe penetration, floor slab**





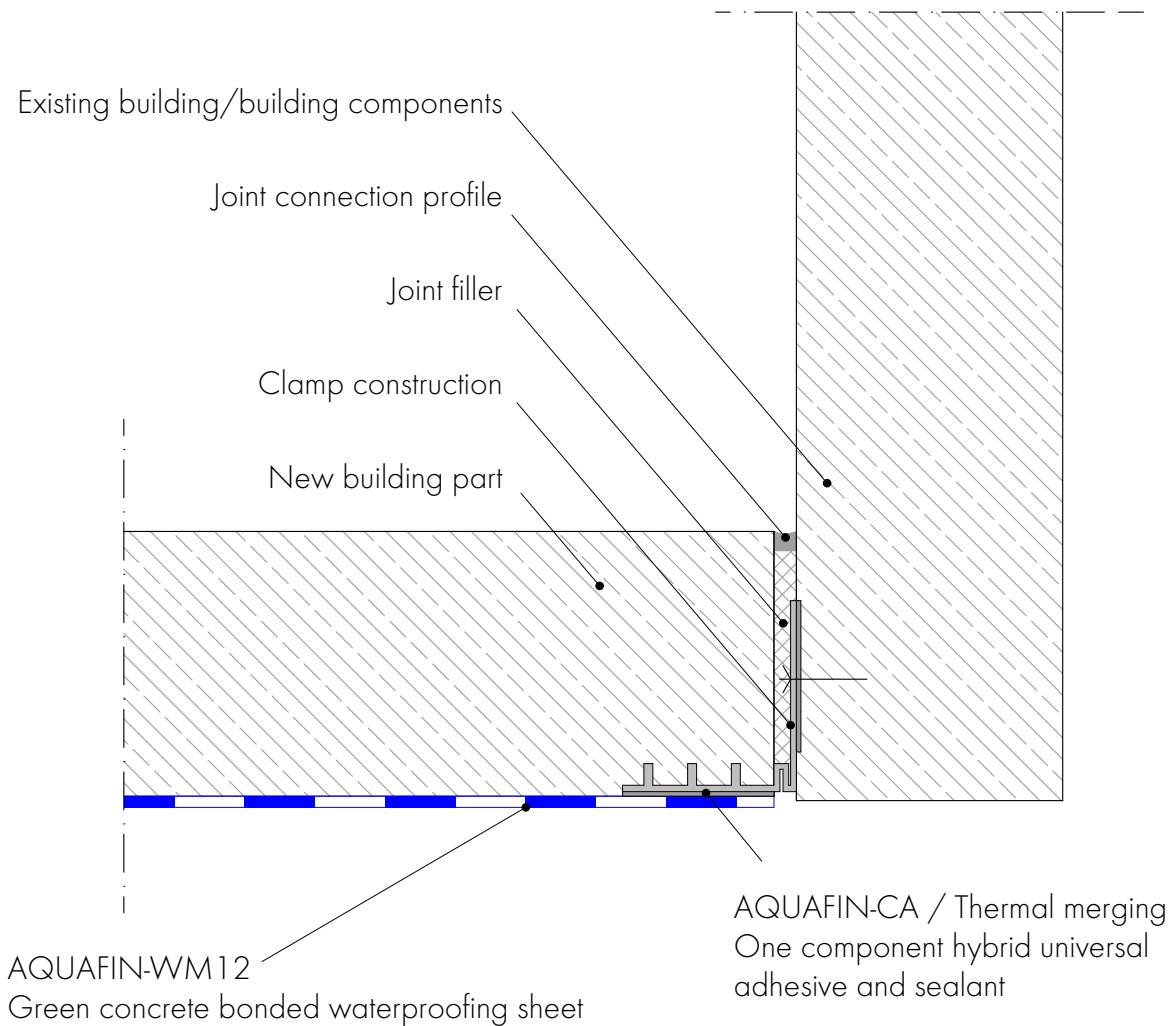
# AQUAFIN®-WM12 Green concrete bonded waterproofing sheet **Anchor, lightning protection**





**Technical Drawing 1.5.2.3.10**

# AQUAFIN®-WM12 Green concrete bonded waterproofing sheet **Connection to existing building structure**

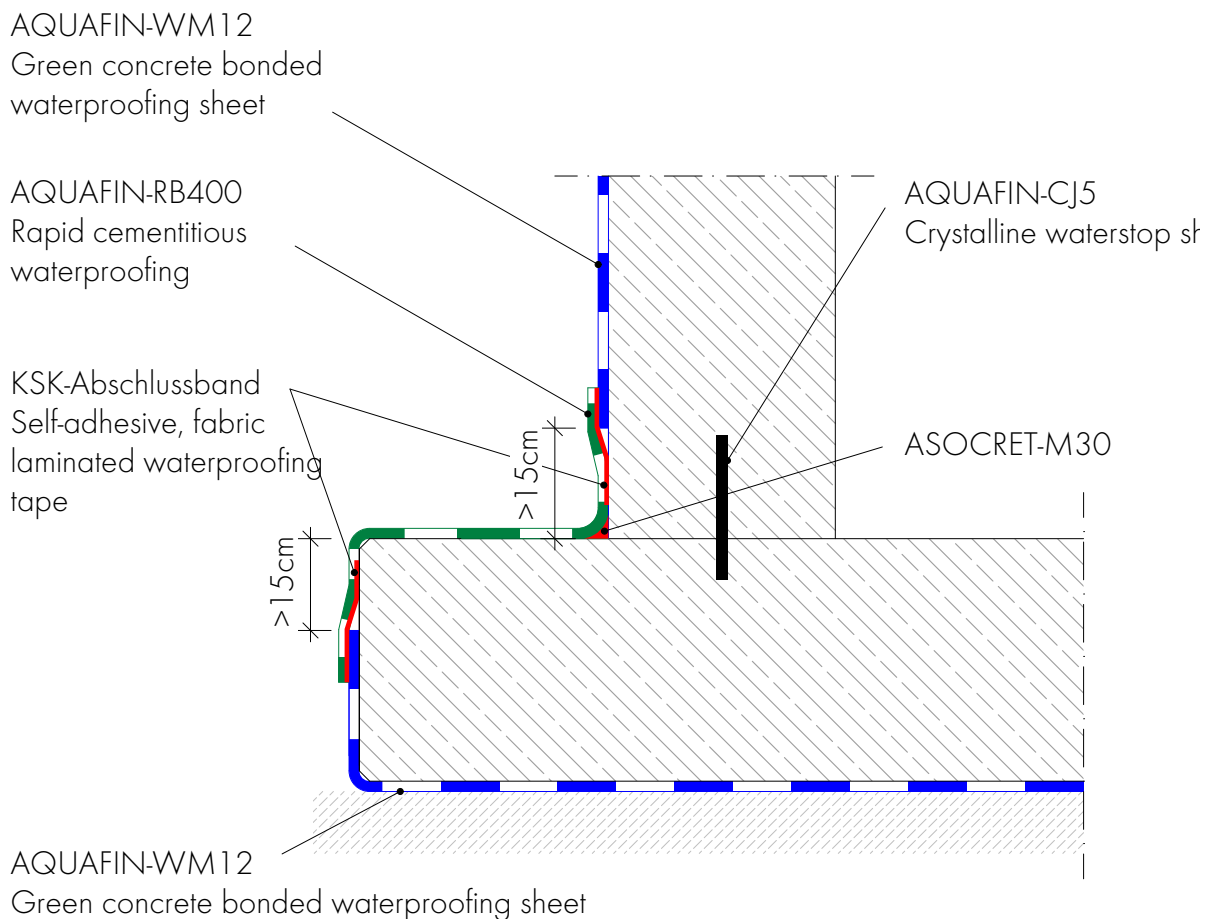




## AQUAFIN®-WM12 Green concrete bonded waterproofing sheet

### Floor/wall transition

Protruding floor slab



KSK-Abschlussband in the overlapping area AQUAFIN-WM12 / -RB400 10cm  
half overlapped

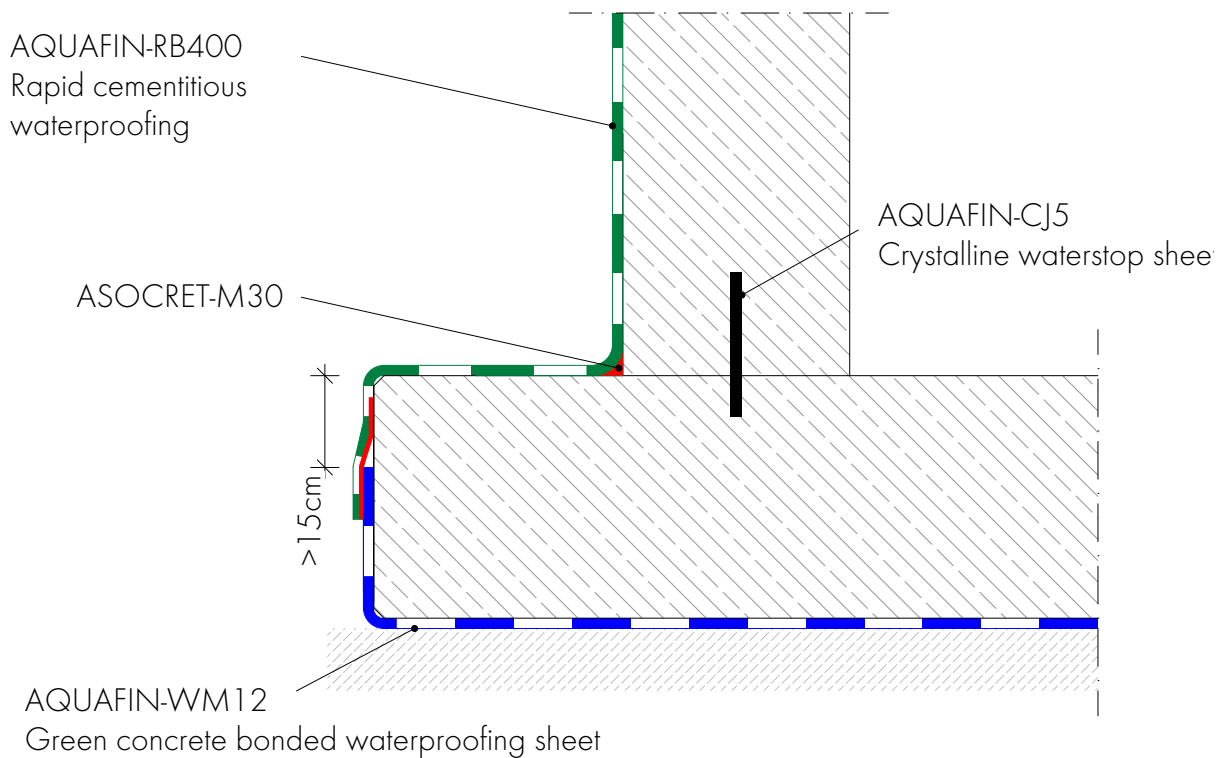


**Technical Drawing 1.5.2.3.12**

AQUAFIN®-WM12 Green concrete bonded waterproofing sheet

**Wall installation with AQUAFIN®-RB400**

Protruding floor slab



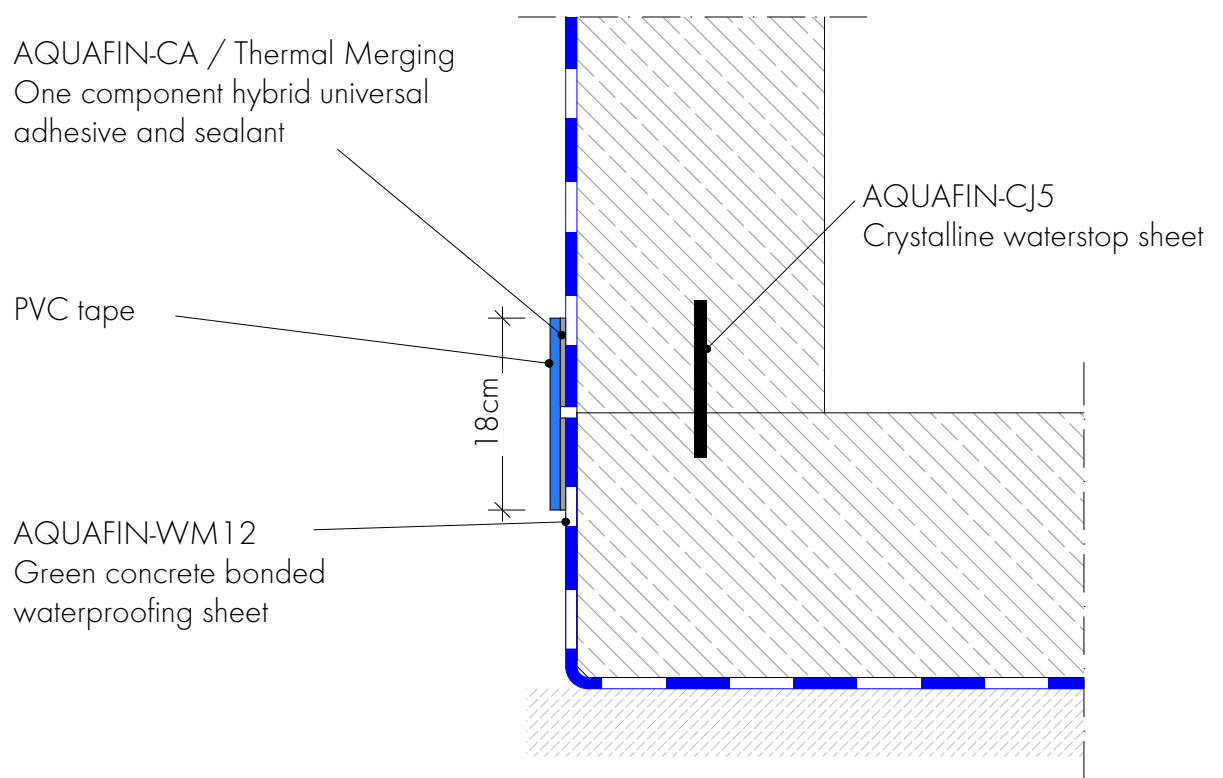




## AQUAFIN®-WM12 Green concrete bonded waterproofing sheet

### Floor/wall transition

Flush floor slab







The SCHOMBURG Group develops, produces and distributes building product systems for the areas of:

- Waterproofing and repair of buildings
- Tiles/natural stone/screed application
- Ground protection/floor coating systems
- Concrete technology

For over 80 years SCHOMBURG's development competence has been a recognised feature in both the domestic and the worldwide marketplace. Building product systems that are produced in-house are highly prized around the world.

Experts value the quality and the efficiency of building product systems, the services and therefore the core competence of the group of companies.

To meet the demanding requirements of an ever-changing market, we continuously invest in the research and development of new and already existing products. This guarantees an ever increasing product quality to the satisfaction of our customers.

SCHOMBURG GmbH & Co. KG  
Aquafinstraße 2-8  
D-32760 Detmold (Germany)  
Telephone +49-5231-953-00  
Fax +49-5231-953-333  
[www.schomburg.com](http://www.schomburg.com)

