

Product information

Smoothing and levelling compounds

SOLOCRET®-50

Anti-sag smoothing compound – rapid hardening



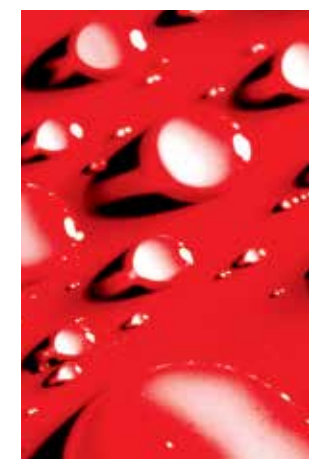
Technical Data:

Basis:	Special cement, aggregate, high quality additives
Flexural and compressive strength*:	4.0 N/mm ² /25 N/mm ² after 28 days
Application temperature:	+5 °C to +25 °C
Pot life*:	min. 30 mins
Water addition:	4.0-4.5 l water : 25 kg SOLOCRET®-50 (dependent on thickness installed)
Consumption:	approx. 1.5 kg/m ² /mm thickness
Overcoat*:	after approx. 3-4 hrs
Foot traffic*:	after approx. 7 day
Packaging:	25 kg plastic bag

*) Values are valid at +23° C and 50% relative humidity.

Areas of application:

- SOLOCRET®-50 is a rapid hardening, highly slump resistant smoothing compound for use at thicknesses from 2-50 mm in one application for preparing substrates before the subsequent installation of ceramic tiles and slabs, natural and artificial stone as well as other finishes, including over underfloor heating.
- SOLOCRET®-50 can be used on suitable substrates such as e.g. mineral-based substrates; concrete to DIN 1045, heated and unheated cement-based screeds to DIN 18560, cement-based renders, old well adhered tiled finishes and rapid setting cement-based screeds.
- SOLOCRET®-50 is suitable for exterior and wet duty areas when an appropriate SCHOMBURG bonded waterproof membrane is installed.



SCHOMBURG GmbH & Co. KG
Aquafinstraße 2-8
D-32760 Detmold (Germany)
phone +49-5231-953-00
fax +49-5231-953-108
email export@schomburg.de
www.schomburg.com

SOLOCRET®-50



Anti-sag smoothing compound – rapid hardening

Properties:

- For thicknesses from 2 - 50 mm in one application
- Rapid hardening
- Low shrinkage
- Smooth and easy application
- For interior and exterior use
- Suitable for heated screeds
- For walls, ceilings and floors



Product application:

Prime the substrate with ASO-Unigrund. Cement-based substrates can also be pre-wetted until matt damp.

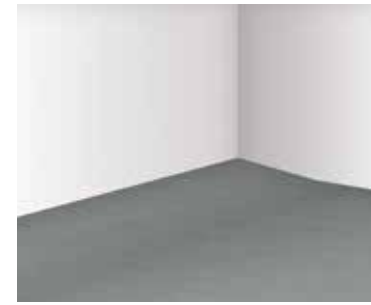
Mix SOLOCRET®-50 at a ratio of approx. 4.0 to 4.5 l water : 25 kg SOLOCRET®-50 with clean water in a clean mixing bucket with a suitable drill mixer for approx. 3-5 minutes until homogenous. After standing for approx. 5 mins, stir through once again. Do not mix more material than can be used within 30 minutes. Produce a scratch coat and then trowel out SOLOCRET®-50 and spread evenly with a suitable tool (plasterer's darby) within the working life of the product.

SOLOCRET®-50 can be applied to surfaces at a thickness of 50 mm in one application and for localised defects also to a thickness of 100 mm. After approx. 60-80 minutes (dependent on the substrate, ambient conditions and thickness), SOLOCRET®-50 can be smoothed off or roughened with a grid float to remove uneven areas and produce a rough surface texture, which provides a good key for subsequent applications of bonded materials.

Application:

The substrate must be dry, load-bearing, adequately flat, free from penetrating cracks and free from separating substances such as e.g. oil, paints, laitance layers and loose components. It must have a largely closed texture and possess surface characteristics and strength typical for its type. Prime absorbent substrates with ASO®-Unigrund. Heat substrates with underfloor heating before applying finishes. The readiness of a substrate to receive finishes is to be determined using the carbide (CM) method and may not fall below the following values:

- CT ≤ 2.0 %
- CA/ CFA unheated ≤ 0.5 %, heated ≤ 0.3 %



1 Load-bearing substrate



2 Cleaning the wall substrate



3 Priming the substrate, e.g. with ASO®Unigrund



4 Adding the smoothing compound to the pre-weighed water



5 Mixing the smoothing compound



6 Levelling uneven areas in walls



7 Cleaning the floor substrate



8 Priming the substrate, e.g. with ASO®Unigrund



9 Levelling and/or creating falls in the floor



10 Even walls and floor ready to receive finishes