

Approval body for construction products
and types of construction

Bautechnisches Prüfamt

An institution established by the Federal and
Laender Governments



European Technical Assessment

ETA-17/0469
of 20 June 2019

English translation prepared by DIBt - Original version in German language

General Part

Technical Assessment Body issuing the
European Technical Assessment:

Deutsches Institut für Bautechnik

Trade name of the construction product

SANIFLEX-EU

Product family
to which the construction product belongs

Watertight covering kits for wet room floors and or walls

Manufacturer

SCHOMBURG GmbH & Co. KG
Aquafinstraße 2-8
32760 Detmold
DEUTSCHLAND

Manufacturing plant

SCHOMBURG GmbH & Co. KG
Aquafinstr. 2-8
32760 Detmold
DEUTSCHLAND

This European Technical Assessment
contains

11 pages including 5 annexes which form an integral part
of this assessment

This European Technical Assessment is
issued in accordance with Regulation (EU)
No 305/2011, on the basis of

ETAG 022 Part 1: "Liquid Applied Coverings with or
without Wearing Surface",
used as EAD according to Article 66 Paragraph 3 of
Regulation (EU) No 305/2011.

This version replaces

ETA-17/0469 issued on 26 February 2019

The European Technical Assessment is issued by the Technical Assessment Body in its official language. Translations of this European Technical Assessment in other languages shall fully correspond to the original issued document and shall be identified as such.

Communication of this European Technical Assessment, including transmission by electronic means, shall be in full. However, partial reproduction may only be made with the written consent of the issuing Technical Assessment Body. Any partial reproduction shall be identified as such.

This European Technical Assessment may be withdrawn by the issuing Technical Assessment Body, in particular pursuant to information by the Commission in accordance with Article 25(3) of Regulation (EU) No 305/2011.

Specific part

1 Technical description of the product

The watertight covering "SANIFLEX-EU" is a kit. It consists of the following components:

- liquid waterproofing mass on the basis of a one-component polymer-dispersion
- primer "ASO-Unigrund-D" on the basis of a one-component polymer-dispersion
- primer "ASO-Unigrund-GE-EU", "ASO-Unigrund-K-EU" and "ASO-Unigrund-K-EU, blau" on the basis of an acrylate-dispersion
- primer "ASO-Unigrund-S" on the basis of a styrene-butadiene rubber
- sealing tape "ASO-Dichtband-2000", "ASO-Dichtband-2000 Sanitär", "ASO-Dichtband-2000-Ecken Innen", "ASO-Dichtband-2000-Ecken Außen", "ASO-Dichtband-2000-T-Stück" and "ASO-Dichtband-2000-Kreuzung"
- sealing sleeve "ASO-Dichtmanschette Wand", "ASO-Dichtmanschette Boden", "ASO-Dichtmanschette-K 12 × 12 cm", "ASO-Dichtmanschette-K 15 × 15 cm" and "ASO-Dichtmanschette-K 25 × 25 cm"

Following adhesives can be used for tiles for gluing the tiles to the waterproofing according EN 12004¹:

"MONOFLEX-XL", "SOLOFLEX", "CRISTALLIT-FLEX", "LIGHTFLEX" on the basis of cement mortar and "ASODUR DESIGN" on the basis of epoxy

The kit is intended to be used under a wearing surface, e.g. tiles. The wearing surface and the jointing material are not part of the kit, but are considered during the assessment of the intended use of the product.

Annex A1 shows the system build-up and annex A2 to A4 shows the components for sealing details.

2 Specification of the intended use in accordance with the applicable European Assessment Document

The intended use of the watertight covering under a wearing surface is to create a floor and wall watertight covering for indoor wet areas at possible operating temperature of 5 °C till 40 °C.

The following uses are intended:

- Floor and/or wall surfaces with only occasional direct exposure to water, e. g. at a good distance from shower or bathtub;
- Floor and/or wall in shower areas or around bathtubs used for a few showers daily, e. g. in ordinary dwellings, multifamily houses and hotels;
- Floor and/or wall surfaces with exposure to water more frequent or of longer duration than normally anticipated in dwellings, e. g. public wet rooms, schools and sport facilities.

The watertight membrane is intended to be used on flexible substrate e. g. plywood, chipboard, gypsum, anhydrite or similar material vulnerable to water and on rigid substrates e. g. masonry or concrete.

The product should be used in connection with the following types of gullies:

Stainless steel or plastics – type PP – with self-adhesive flange for attaching of collar/membrane or with clamping flange or screw flange.

¹ EN 12004:2014-02

Adhesives for tiles - Requirements, evaluation of conformity, classification and designation

The gullies are not part of the kit. It is up to the responsibility of the user to use suitable products of the given types.

The performances given in Section 3 are only valid if the watertight covering kit is used in compliance with the specifications and conditions given in Annex B.

The verifications and assessment methods on which this European Technical Assessment is based lead to the assumption of a working life of the watertight covering kit of at least 25 years. The indications given on the working life cannot be interpreted as a guarantee given by the producer, but are to be regarded only as a means for choosing the right products in relation to the expected economically reasonable working life of the works.

3 Performance of the product and references to the methods used for its assessment

3.1 Safety in case of fire (BWR 2)

Essential characteristic	Performance
Reaction to fire	See Annex A1

3.2 Hygiene, health and the environment (BWR 3)

Essential characteristic	Performance
Content, emission and/or release of dangerous substances	
Substance(s) classified as EU-cat. Carc. 1A/1B ^{a)}	The kit does not contain these dangerous substances. ^{b), c)}
Substance(s) classified as EU-cat. Muta. 1A/1B ^{a)}	
Substance(s) classified as EU-cat. Acute Tox. 1, 2 and/or 3; substance(s) classified as EU-cat. Repr. 1A/1B; substance(s) classified as EU-cat. STOT SE 1 and/or STOT RE 1 ^{a)}	The kit does not contain these dangerous substances except: ^{b), c)} Substance 1 classified as EU-cat. Acute Tox. 3 (H301, H311) and classified as EU-cat. Acute Tox. 2 (H330) Substance 2 classified as EU-cat. Acute Tox. 3 (H301, H331) Substance 3 classified as EU-cat. Acute Tox. 2 (H330) and STOT RE 1 (H372)
Release scenarios regarding BWR 3: IA2 (in accordance with EOTA TR 034)	The release of dangerous substances was not assessed.

Vapour permeability	See Annex A1, declared value
Watertightness	See Annex A1
Crack bridging ability	See Annex A1, category
Bond strength	See Annex A1, category
Scratching resistance	See Annex A1
Joint bridging ability	See Annex A1, category
Watertightness around penetrations	See Annex A1, category
Resistance to temperature	See Annex A1, category
Resistance to water	See Annex A1, category
Resistance to alkalinity	See Annex A1, category
Resistance to mechanical wear	See Annex A1, declared value
Cleanability	See Annex A1, declared value
Reparability	See statement of the manufacturer
Thickness	See Annex A1, declared value
Applicability	See Annex A1, declaration
Watertightness around penetrations	See Annex A1, category

- a) In accordance with Regulation (EC) No 1272/2008.
b) Assessment based on the detailed manufacturer's statements.
c) At the time of assessment the biocidal products used are marketable.

3.3 Safety and accessibility (BWR 4)

Essential characteristic	Performance
Slipperiness	no performance assessed

3.4 General aspects

The verification of durability and serviceability is only ensured if the specifications of intended use according to Annex B and the specifications of the technical file of the manufacturer are kept.

4 Assessment and verification of constancy of performance (AVCP) system applied, with reference to its legal base

According to ETAG 022 used as EAD the applicable European legal act is: 2003/665/EC

The system to be applied is: 2+

In addition, with regard to reaction to fire for products covered by this EAD the system to be applied is: 3

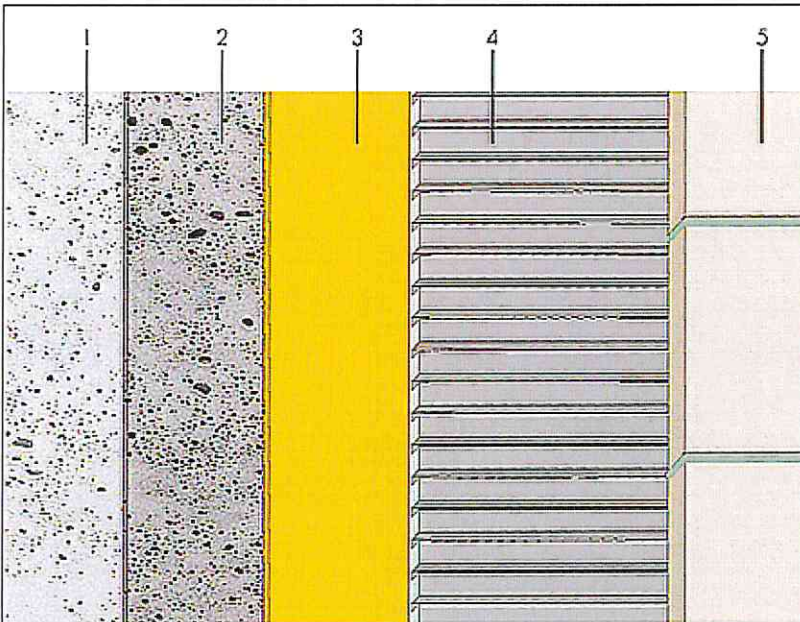
5 Technical details necessary for the implementation of the AVCP system, as provided for in the applicable EAD

Technical details necessary for the implementation of the AVCP system are laid down in the control plan deposited with Deutsches Institut für Bautechnik.

Issued in Berlin on 20 June 2019 by Deutsches Institut für Bautechnik

BD Dipl.-Ing. Andreas Kummerow
Head of Department

beglaubigt:
Gnamou



- 1 Substrate
- 2 Primer "ASO-Unigrund-K-EU", "ASO-Unigrund-K-EU, blau", "ASO-Unigrund-GE-EU", "ASO-Unigrund-S" or "ASO-Unigrund-D"
- 3 layer "SANIFLEX-EU"
- 4 Adhesive "MONOFELX-XL", "SOLOFLEX", "CRISTALLIT-FLEX", "LIGHTFLEX" or "ASODUR DESIGN"
- 5 Tiles (not part of the kit)

Minimum layer thickness of the waterproofing sheet 0.5 mm

Level of use categories according to ETAG 022 with relation to:

Crack bridging ability	category 1: 0.4 mm
Bond strength	category 2: ≥ 0.5 MPa
Joint bridging ability	category 2: watertight
Water tightness around penetrations	category 2: watertight
Resistance to water	category 2: ≥ 0.5 MPa
Resistance to temperature	category 2: $\geq 0,5$ MPa
Resistance to alkalinity	category 2: ≥ 0.5 MPa

Performance of the product:

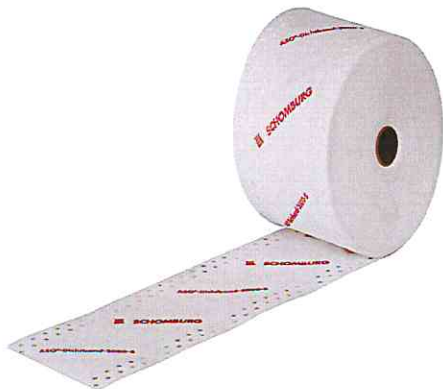
Working life	25 years
Reaction to fire acc. to EN 13501-1	class E
Statement on dangerous substance	see section 3.2
Water vapour diffusion resistance factor (23 °C – 75/100 % r.h.)	
Aso-Unigrund-D	$s_D \approx 44$ m, $\mu = 4150$
Aso-Unigrund-GE/K	$s_D \approx 9.0$ m, $\mu = 840$
Aso-Unigrund-S	$s_D \approx 6.8$ m, $\mu = 650$
Water tightness acc. to EN 13967	watertight
Scratch resistance	not relevant acc. ETAG 022-1
Resistance to mechanical wear	not relevant acc. ETAG 022-1
Cleanability	not relevant acc. ETAG 022-1
Applicability	applicable

SANIFLEX-EU
SCHOMBURG GmbH & Co. KG

System built-up, levels of use categories and performances of the product

Annex A1

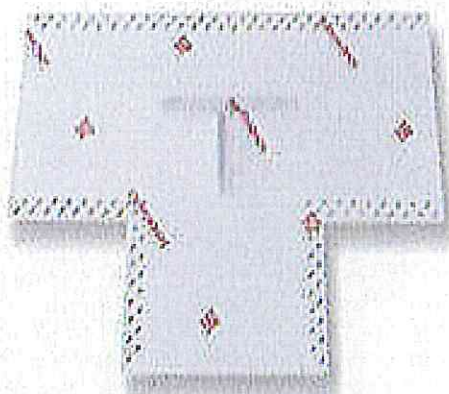
Sealing tape:



"ASO-Dichtband-2000"



"ASO-Dichtband-2000 Sanitär"



"ASO-Dichtband-2000-T-Stück"



"ASO-Dichtband-2000-Kreuzung"

SANIFLEX-EU
SCHOMBURG GmbH & Co. KG

Details and components

Annex A2

Ingoing/outgoing corners:



"ASO-Dichtband-2000-Ecken Innen"



"ASO-Dichtband-2000-Ecken Außen"

Sealing sleeves for walls:



"ASO-Dichtmanschette Wand"

SANIFLEX-EU
SCHOMBURG GmbH & Co. KG

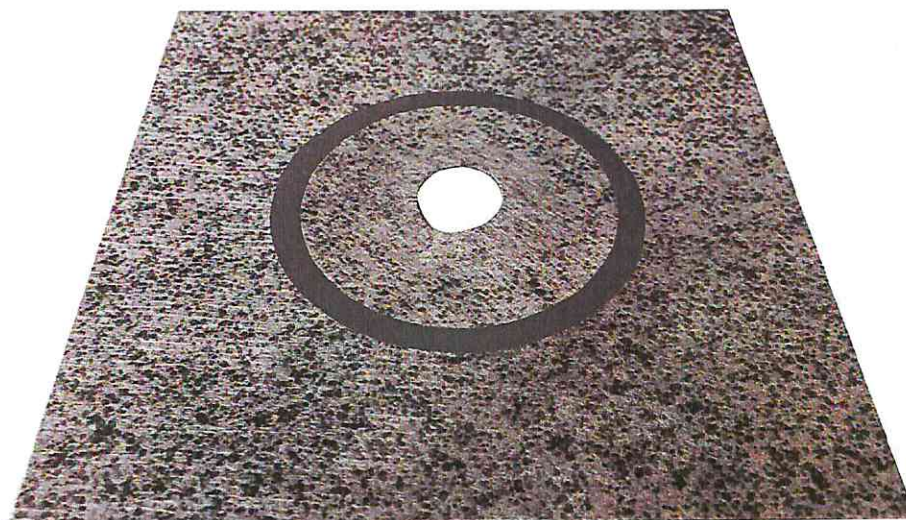
Details and Components

Annex A3

Sealing sleeves for floors:



"ASO-Dichtmanschette Boden"



"ASO-Dichtmanschette-K 12 × 12 cm"
"ASO-Dichtmanschette-K 15 × 15 cm" or
"ASO-Dichtmanschette-K 25 × 25 cm"

SANIFLEX-EU
SCHOMBURG GmbH & Co. KG

Details and components

Annex A4

Installation

The levels of use categories and the performance of the waterproofing kit can be assumed only, if the installation is carried out according to the installation instructions stated in the technical file of the manufacturer, in particular taking account of the following points:

- installation by appropriately trained personnel,
- installation of only those components which are specified components of the kit,
- installation with the required tools and adjuvant,
- precautions during installation,
- inspecting the substrate surface for cleanliness and correct treatment,
- inspecting during installation and of the finished watertight membrane and documentation of the results.

SANIFLEX-EU
SCHOMBURG GmbH & Co. KG

Intended use
Specifications

Annex B