

Product information

Waterproofing systems



Areas of application:

- SANIFLEX is used for seamless and jointless waterproofing beneath tiles in wet duty areas where impermeability to water is required such as e.g. in domestic bathrooms and kitchens, private and commercial washrooms.
- SANIFLEX is suitable for walls in wet duty class A in accordance with general technical test criteria and wet duty class A0 in accordance with the ZDB data sheet "Bonded waterproof membranes".
- SANIFLEX is suitable for use in interior rooms in accordance with the AgBB evaluation scheme (Committee for Health-related Evaluation of Building Products) and the French VOC by-law. Very low emissions in accordance with GEV-EMICODE, which as a rule leads to positive evaluation within the scope of building certification systems in accordance with DGNB, LEED, BREEAM, HQE.

SANIFLEX

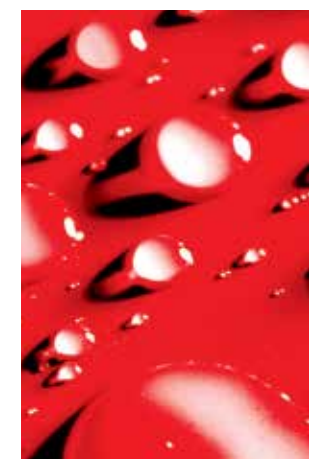
Liquid waterproof membrane for bonded waterproofing systems

Technical Data:

Basis:	solvent free polymer dispersion with carbonate fillers
Colour:	ochre and grey
Ready for foot traffic/ ready to receive finishes*:	after approx. 1 day
Pot life*:	approx. 60 mins
Wet duty exposure class:	A (wall), A0
Substrate/Material/ Application temperatur:	+5°C to + 30°C
Consumption:	approx. 1.2 kg/ m ² per approx. 0.5 mm dry film thickness (no allowance has been made for greater consumption due to uneven substrates)
Packaging:	5, 12 and 20 kg packs in the colour ochre as a trowel, brush or roller applied variant 20 kg pack in the colour grey as a trowel, brush or roller applied variant

* +20 °C and 65 % relative humidity

System components	Exposure classes A, A0
ASO-DB-Standard	×
ASO-Joint-Tape-2000	×
ASO-Joint-Tape-2000-S	×
ASO-Joint-Tape-2000-Corners, (90°, internal/external)	×
ASO-Joint-Tape-2000-S-Corners, (90°, internal/external)	×
ASO-Joint-Tape-2000-T-pieces, cross pieces	×
ASO-Joint-Sleeve-Floor/Wall	×
UNIFIX-S3	×
UNIFIX-2K	×
UNIFIX-2K/6	×
LIGHTFLEX	×
MONOFLEX-FB	×
MONOFLEX-XL	×
ASODUR-EK98-Wall/-Floor	×
ASODUR-Design	×
SOLOFLEX	×
AK7P	×
CRISTALLIT-flex	×
SOLOFLEX-white modified with UNIFLEX-B	×
CRISTALLIT-MULTI-flex	×
UNIFIX-S3-FAST	×



SCHOMBURG GmbH & Co. KG
 Aquafinstraße 2-8
 D-32760 Detmold (Germany)
 phone +49-5231-953-00
 fax +49-5231-953-108
 email export@schomburg.de
 www.schomburg.com

SANIFLEX



Liquids waterproof membrane for bonded waterproofing systems

Properties:

- One component
- Ready-to-use
- Fast drying
- Brush, roller or trowel applied
- Very easy to trowel and smooth
- Simple effective application
- Very low emissions
- Environmentally friendly as solvent free
- Vapour permeable
- Elastic and impermeable to water

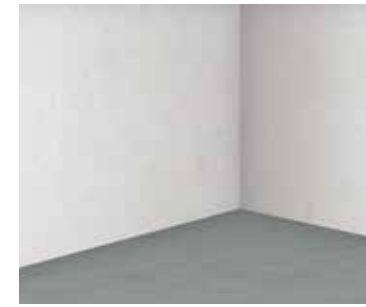
Product application:

1. Prime the substrate with ASO®-Unigrund.
2. Once the primer has dried, apply SANIFLEX undiluted with a steel float, brush or a lamb's wool roller. When trowel applying, an even thickness is achieved by using a 4 mm notched trowel and subsequently smoothing. At least two coats are required when brush or roller applying. The previous coat must have dried out before the second coat is applied.
3. For the formation of impermeable movement and connecting joints, insert the system components from the ASO-Joint-Tape technology appropriate for the particular wet duty class. Coat both sides of the joint to be bridged with SANIFLEX with a 4-6 mm notched trowel. Lay the joint tape into the wet coat and then carefully press into the waterproofing layer with a steel trowel or hard roller, without voids or folds. Overlap joint tape ends by a minimum of 5 to 10 cm, bond with SANIFLEX without folds and with a full bed.
4. Installation of tiles is carried out with one of the named adhesives from the system components. At the time of tiling, the waterproof coat must have hardened.
5. Do not expose SANIFLEX to water until cured. In this context, bonded overlapped areas of joint tape/pre-formed pieces will take considerably longer to dry dependent on ambient conditions.

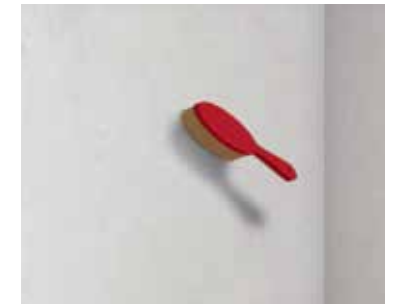
Application:

All flat, load-bearing surfaces, which can take tiles and bonded waterproof membranes are suitable. Furthermore the suitability of the substrate in the appropriate wet duty class must be given (refer to ZDB data sheet). The substrate must be load-bearing, adequately flat to DIN 18202, free from penetrating cracks and be free from separating substances such as e.g. oil, paint, laitance layers and loose areas. Plasters/renders to DIN EN 998-1 must have a minimum compressive strength of 2.5 N/mm² and be suitable for installing tiles in the relevant wet duty class.

Ensure that there are no height differences within the substrate to receive finishes and that there is no route for moisture penetration from the reverse side.



1 Load-bearing substrate



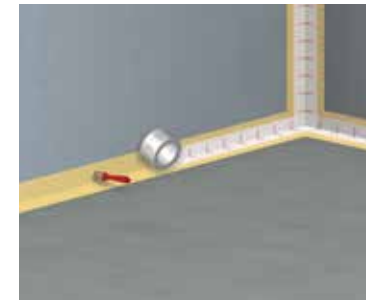
2 Cleaning the wall substrate



3 Priming the substrate, e.g. with ASODUR®-GBM



4 SANIFLEX, suitable tools



5 Bonding the ASO®-Joint-Tape into the first coat of the waterproofing membrane



6 Application of the first coat of waterproofing membrane



7 Allow the first coat to dry



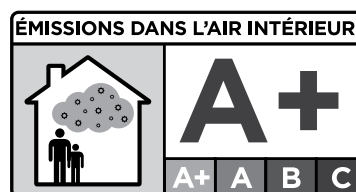
8 Application of the second coat of waterproofing membrane



9 Completed waterproof membrane



CERTIFIÉ **CSTB** CERTIFIED



Information about the emission level of volatile compounds in indoor air, which pose a health risk by inhalation, on a scale from class A+ (very low emissions) to C (high emissions).