



# ASODUR®-EV200

## High-performance grouting and levelling mortar

Reaction resin mortar for particularly demanding applications and universal use as a problem solver.

### Problems Solved.





# Unrivalled performance!

Easy to apply, versatile in use, high strength and very resistant – even under extreme loads.

For grouting machines, creating stable foundations, fixing stainless steel gutters, installing capillary-breaking joints in swimming pool construction and installing load-bearing, flowable levelling layers in commercial and private areas in a short time. All of these everyday tasks can be completed quickly and easily, with particular durability and reliability, with the universal grouting and levelling mortar **ASODUR-EV200**.

## Properties

- 3-component epoxy resin
- Dark grey pigmented
- Solvent-free
- Low shrinkage
- Layer thicknesses from 10-200 mm in one application step
- Watertight up to 5 bar (from 20 mm layer thickness)

## Advantages

- Applicable for grouting and surface applications
- Adheres to matt damp and dry substrates without primer
- Rapid strength development
- Very high compressive and flexural strengths
- Tested in accordance with DIN EN1504-6 "Anchor grouting" and DIN EN13813 "Screed standard"
- Overcoatable with ASODUR coatings and sealants without primer
- Very well suited as substrate under tile and natural stone coverings

## Technical data

Pot life*	approx. 100 minutes
Foot traffic and overcoat after*	approx. 12 hours
Compressive strength after 7 days	approx. 109 N/mm <sup>2</sup>
Flexural strength after 7 days	approx. 40 N/mm <sup>2</sup>
Packaging	6.7 kg (A+B), 23.3 kg (C)
Consumption	approx. 1.9 kg/m <sup>2</sup> /mm layer thickness

\* The data applies to +23 °C / 50% relative humidity.



Find out more about the product **ASODUR-EV200** here.



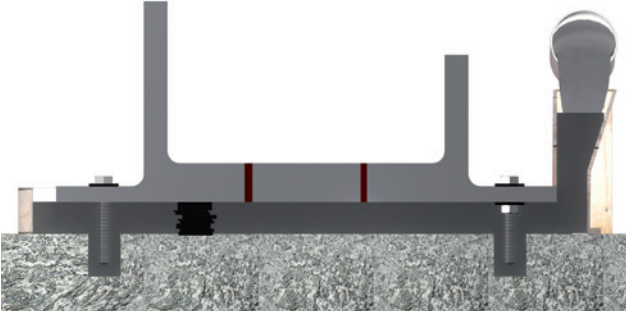
You will find products for reliable substrate levelling here.

<b>SCHOMBURG GmbH &amp; Co. KG</b> Aquafinstraße 2-8 D-32760 Detmold, Germany 17 2 06436	
DIN EN 1504-6:2006-11 <b>ASODUR-EV200</b> Anchoring product	
Pull-out resistance Chloride ion content Glass transition temperature Creepage under tensile load Reaction to fire Hazardous substances	≤ 0.6 mm ≤ 0.05 % ≥ 45 °C ≤ 0.6 mm E NPD

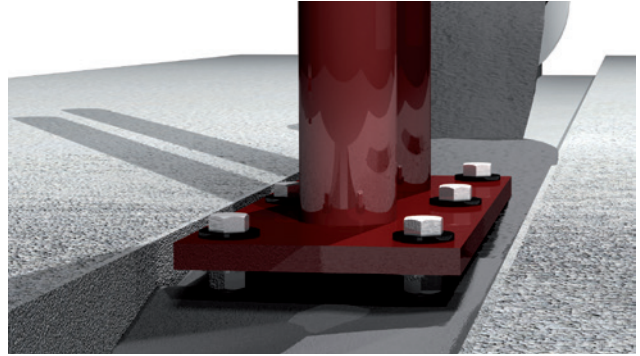
NPD = "No Performance Determined"

<b>SCHOMBURG GmbH &amp; Co. KG</b> Aquafinstraße 2-8 D-32760 Detmold, Germany 19 2 06436	
EN 13813 <b>ASODUR-EV200</b> Synthetic resin screed mortar for indoor application	
Reaction to fire Release of corrosive substances Compressive strength Flexural strength Wear resistance Adhesive strength Impact resistance	Class E SR C80 F30 ARO.5 B2.0 IR16

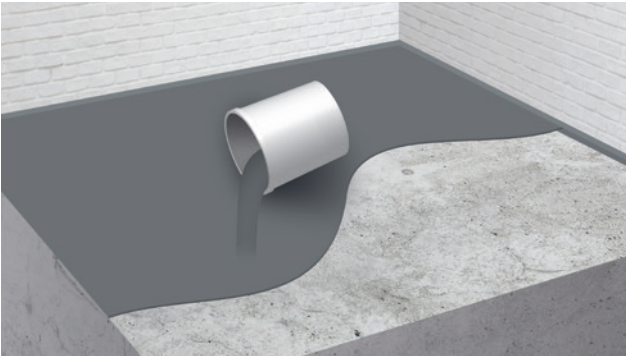
A wide range of applications with great reliability



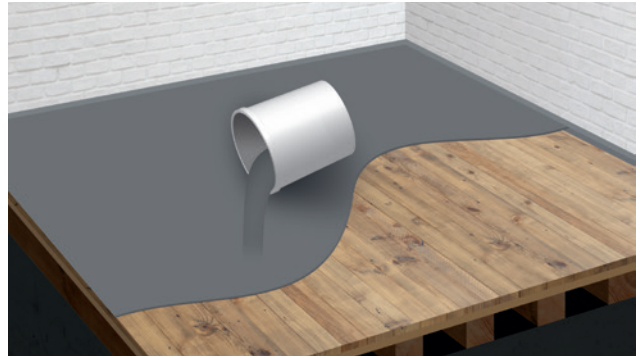
Grouting machine elements



Grouting steel beams



Application of a load distribution layer on concrete floors



Application of a load distribution layer on wooden floorboards



**Practical example**  
Application of a flowable levelling layer on concrete



**Practical example**  
Grouting concrete elements

The SCHOMBURG group of companies develops, produces and distributes system building products for the areas of:

- Waterproofing and repair of buildings
- Tiles/natural stone/screed application
- Ground protection/floor coating systems
- Concrete technology

For over 80 years SCHOMBURG's development competence has been a recognised feature in both the domestic and the worldwide marketplace. Building product systems that are produced in-house are highly prized around the world.

Experts value the quality and the efficiency of building product systems, the services and therefore the core competence of the group of companies.

To meet the demanding requirements of an ever-changing market, we continuously invest in the research and development of new and already existing products. This guarantees an ever increasing product quality to the satisfaction of our customers.

SCHOMBURG GmbH  
Aquafinstraße 2-8  
D-32760 Detmold (Germany)  
Telephone +49-5231-953-00  
Fax +49-5231-953-333  
[www.schomburg.de](http://www.schomburg.de)

