

Product information

Primers

ASO®-Unigrund-GE

Ready to use primer

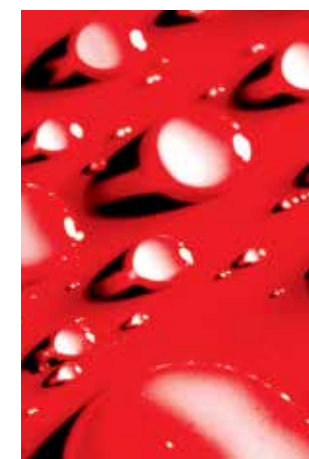


Technical Data:

Basis:	acrylate dispersion
Colour:	green
Mixing ratio:	ready to use
Application/substrate temperature:	+5°C to +30°C
Consumption:	approx. 200 g/m ²
Packaging:	1, 5, 10, 25, 210 litre containers

Areas of application:

- ASO®-Unigrund-GE reduces the absorption of substrates, binds surface dust, consolidates, prevents rapid water loss from levelling compounds.
- ASO®-Unigrund-GE is used for priming absorbent and lightly sanded substrates e.g. gypsum-based construction materials (plaster, interlocking gypsum slabs, boards, screeds), concrete, masonry work and similar.
- Suitable as an adhesion promoter for surface applied waterproof membranes (e.g. SANIFLEX, AQUAFIN®-2K/M), thin-bed adhesives as well as wall and floor levelling compounds such as SOLOCRET®-50, SOLOPLAN®-30 and ASO®-NM15. It is also suitable for exterior use.



SCHOMBURG GmbH & Co. KG
Aquafinstraße 2-8
D-32760 Detmold (Germany)
phone +49-5231-953-00
fax +49-5231-953-108
email export@schomburg.de
www.schomburg.com

ASO®-Unigrund-GE

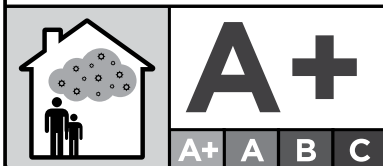
Ready to use primer

Properties:

- Rapid drying
- Universal application
- Resistant to water and alkalis
- Low emission
- Solvent free
- For interior and exterior use



ÉMISSIONS DANS L'AIR INTÉRIEUR*



Information about the emission level of volatile compounds in indoor air, which pose a health risk by inhalation, on a scale from class A+ (very low emissions) to C (high emissions).

Product preparation:

ASO®-Unigrund- GE is ready to use. Application is with a paint brush, brush or a fine-pored sponge roller but it can also be sprayed with suitable equipment. Avoid applying too thickly or forming puddles. ASO®-Unigrund- GE must be fully dry before further work can be carried out on the primed surface.

Application:

The substrate must be load-bearing, clean, dry and free from materials, which will impede adhesion. Flow screeds must be abraded and vacuumed. Remove unstable or weakly bonded layers e.g. release agents, residues of old adhesive, levelling layers, surface finishes and paints, by mechanical scrubbing, planing, scabbling or shot-blasting.



1 Cleaning the wall substrate



2 Priming the wall substrate



3 Cleaning the floor substrate



4 Priming the floor substrate