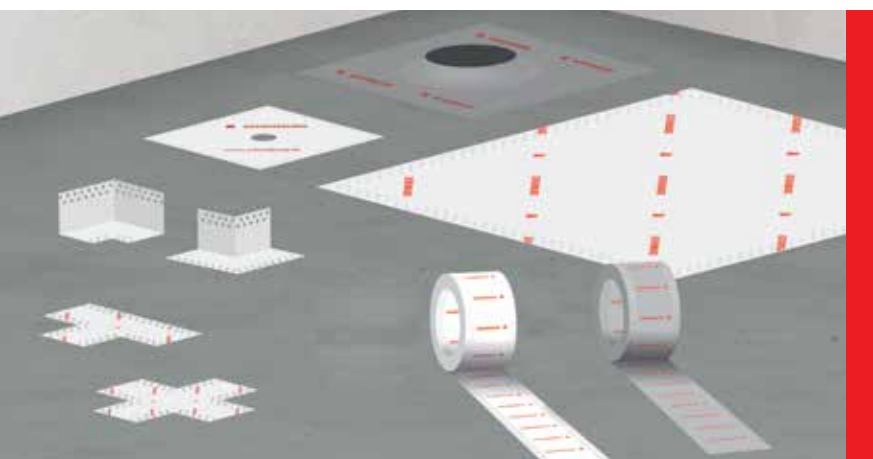


Product information

Waterproof Joint-Tape and pre-formed pieces



ASO®-Joint-Tape-2000 ASO®-Joint-Tape-2000-Corners ASO®-Joint-Tape-2000-T-Piece ASO®-Joint-Tape-2000-Crossing

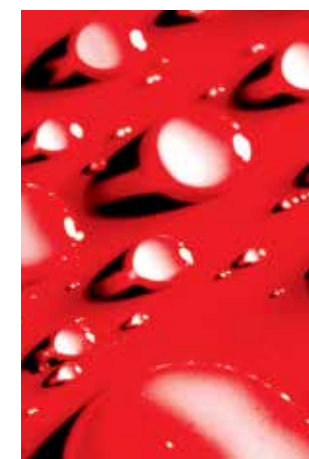
Waterproof Joint-Tape and corner pieces for standard applications

Technical Data:

Basis:	composite material fleece-membrane-fleece
Colour:	white with SCHOMBURG lettering
Thickness:	approx. 0.37 mm ± 0.1 mm Internal/external angles 0.5 mm ± 0.1 mm
Weight:	approx. 150-190 g/m ² Internal angles approx. 3.5 g/piece External angles approx. 5 g/piece
Tolerated movement accommodation:	max. 30% of the joint width
Bursting pressure:	> 2 bar
Sd value:	30 m ± 5 m
Temperature resistance:	-22 °C to +90 °C
UV resistance to DIN EN ISO 4892-2:	minimum 500 hrs
Reaction to fire:	B2
Breaking force, longitudinal to DIN 527-3:	> 50 N / 15 mm
Breaking force, transverse to DIN 527-3:	> 32 N / 15 mm
Elongation, longitudinal to DIN 527-3:	> 60 %
Elongation, transverse to DIN 527-3:	> 60 %
Packaging:	Joint-Tape: Width 12 cm and 20 cm, ± 2 mm Rolls of 10 and 50 m Joint-Tape- Corners: 20 pieces per box Internal and external angles 12 cm × 12 cm

Areas of application:

- ASO®-Joint-Tape-2000 is used for forming waterproof movement joints and junctions in waterproof membranes such as e.g. SANIFLEX, SANIFIN, AQUAFIN®-1K-flex, AQUAFIN®-2K, AQUAFIN®-2K/M, AQUAFIN®-RS300 and ASOFLEX-AKB.
- ASO®-Joint-Tape-2000 fulfills the requirements of the DIBt test principles and the ZDB data sheet "Bonded waterproof membranes", which are valid for wet duty classes A, B and C.
- ASO®-Joint-Tape-2000 is easy to use, vapour permeable and forms an integral bond with the named waterproof membranes.



SCHOMBURG GmbH & Co. KG
Aquafinstraße 2-8
D-32760 Detmold (Germany)
phone +49-5231-953-00
fax +49-5231-953-108
email export@schomburg.de
www.schomburg.com

2 05936
2 05940
2 05941
2 05943
2 05944

ASO®-Joint-Tape-2000

ASO®-Joint-Tape-2000-Corners

ASO®-Joint-Tape-2000-T-Piece

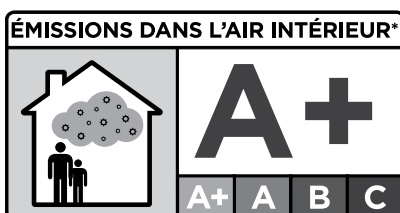
ASO®-Joint-Tape-2000-Crossing



Waterproof Joint-Tape and corner pieces for standard applications

Properties:

- Composite material
- Water vapour permeable
- Highly resistant to aggressive media
- Elastic
- Tear resistant
- Thin build-up
- UV stabilised
- Very low emissions
- Guarantees the quick drying of adhesives and waterproof membranes, which contain water
- Fulfills the AgBB scheme requirements.



Information about the emission level of volatile compounds in indoor air, which pose a health risk by inhalation, on a scale from class A+ (very low emissions) to C (high emissions).

Product application:

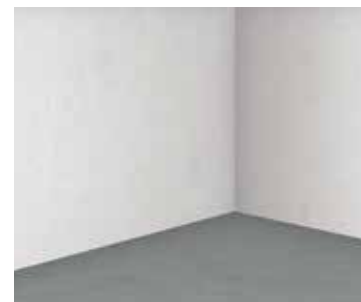
Using the waterproof membrane, bond ASO®-Joint-Tape-2000 or ASO®-Joint-Tape-2000 internal/external angles for use in corners, at the transition between wall and floor as well as interface joints, to the prepared area without voids or folds. Where structural movement joints / movement joints cross over, ASO®-Joint-Tape-2000-T sections or ASO®-Joint-Tape-2000 crosses are available, which permit them to be laid in a looped formation at cross over points. Butt joints must be overlapped by 5 to 10 cm. Ensure that a watertight connection between the wall and the surface applied waterproof membrane is produced.

1. Coat both sides of the joint to be bridged with the waterproof membrane to a width of at least 2 cm wider than the waterproof tape, e.g. with a 4 - 6 mm notched trowel.
2. Then thoroughly work the joint tape, without voids or folds, into the waterproof membrane using a steel trowel or pressure roller. Ensure that, as far as possible, a full bed and wetting out is achieved. Bonding must be performed in such a way as to exclude the migration of water behind the joint tape.
3. The joint tape is to be worked into movement joints as a loop.
4. Overlap butt joints within joint tape sections or at interfaces with all joint tape pre-formed pieces and angles by a minimum of 5 to 10 cm and bond with the waterproof membrane, without voids or folds. Overcoat with the chosen waterproof membrane.

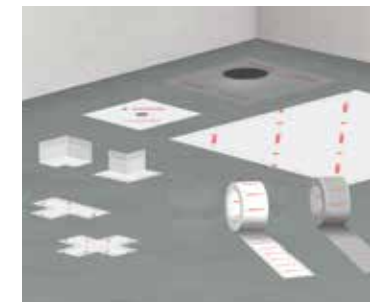
Application:

All usual substrates, which are suitable to take a waterproof membrane and tiled finish under the relevant exposure class (ZDB data sheet "Bonded waterproof membranes") and which have been professionally prepared. Fine, non-penetrating cracks on the surface of < 0.1 mm are permitted.

Chemical resistance after 7 days storage at +22° C with the following chemicals:
Hydrochloric acid 3 %, Sulphuric acid 35 %, Citric acid 100 g/l, Lactic acid 5 %, Potassium hydroxide 20 %, Sodium hydroxide 0.3 g/l, Salt water 20 g/l (sea salt)



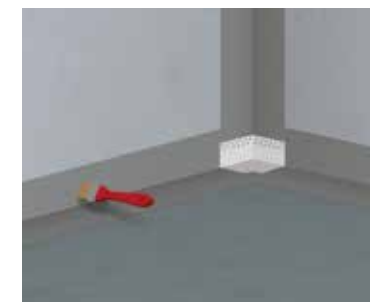
1 Load-bearing substrate



2 ASO®-Joint-Tape-Technologie



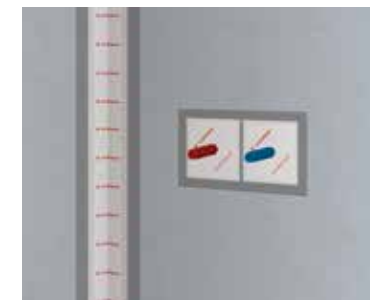
3 Priming the substrate, e.g. with ASO®-Unigrund



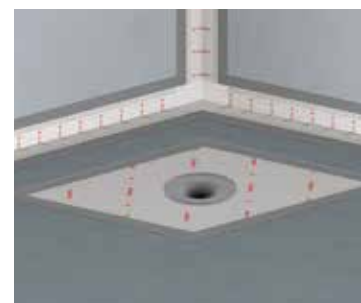
4 Bonding ASO®-Joint-Tape-2000-Corners in the first coat of the waterproof membrane



5 Bonding ASO®-Joint-Tape-2000 in the first coat of the waterproof membrane



6 Bonding ASO®-Joint-Sleeve-Wall in the first coat of the waterproof membrane



7 Bonding ASO®-Joint-Sleeve-Floor in the first coat of the waterproof membrane



8 Bonded ASO®-Joint-Tape technology



9 Overcoating the ASO®-Joint-Tape technology and waterproofing the surface with a suitable SCHOMBURG bonded waterproof coating