

Product information

Waterproof tape



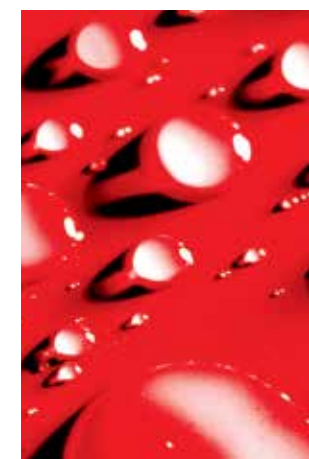
ASO®-DB-Standard

Technical data:

Basis:	polyester fabric with a thermoplastic polyvinyl chloride (PVC) elastomer coating
Colour:	grey
Thickness:	approx. 0.62-0.80 mm
Impermeability to water in accordance with DIN EN 1928:	≥ 1.5 bar
Bursting pressure max.:	approx. 4 bar
Temperature resistance:	from -22 °C to +60 °C
UV resistance in accordance with DIN EN ISO 4892-2:	minimum 500 hours
Elongation, longitudinal according to DIN 527-3:	≥ 20%
Elongation, transverse according to DIN 527-3:	≥ 80%
Packaging:	Joint Tape: width 120 mm ± 2 mm with an approx. 70 mm wide elastomeric coating in the centre, 50 m rolls

Areas of application:

- ASO®-DB-Standard is used for the formation of flexible, water impermeable movement joints and connecting joints beneath tiles within e.g. SANIFLEX, AQUAFIN®-1K-flex, AQUAFIN®-2K, AQUAFIN®-2K/M, AQUAFIN®-RS300 and ASOFLEX®-AKB waterproof membranes.
- ASO®-DB-Standard is for use in wet duty exposure classes A0, B0 in accordance with the ZDB technical sheet „bonded waterproof membranes“.
- ASO®-DB-Standard is easy to use and forms an intimate bond with the above named waterproof systems.



SCHOMBURG GmbH & Co. KG
Aquafinstraße 2-8
D-32760 Detmold (Germany)
phone +49-5231-953-00
fax +49-5231-953-108
email export@schomburg.de
www.schomburg.com

ASO®-DB-Standard



Properties:

- Elastomeric coating
- Water impermeable
- Elastic
- UV stabilized
- Weatherproof
- Alkali resistant

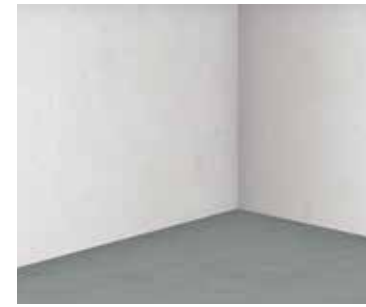
Product application:

ASO®-DB-Standard at the transition between wall and floor as well as interface joints to the prepared area without voids or folds. Butt joints must be overlapped by 5 to 10 cm. Ensure that a sealed connection to the surrounding waterproof membrane is produced.

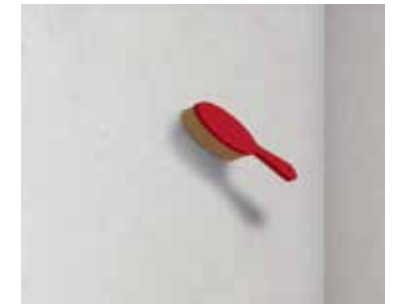
1. Coat both sides of the joint to be bridged with the waterproof membrane to a width of at least 2 cm wider than the waterproof tape, e.g. with a 4 - 6 mm notched trowel.
2. Then thoroughly work the waterproof tape, without voids or folds, into the waterproof membrane using a steel trowel or pressure roller. Ensure that, as far as possible, a full bed and wetting out is achieved. Bonding must be performed in such a way as to exclude the migration of water behind the waterproof tape.
3. The waterproof tape is to be worked into movement joints as a loop.
4. Overlap butt joints within waterproof tape sections or at interfaces with all waterproof tape pre-formed pieces and corners by a minimum of 5 to 10 cm and bond with the waterproof membrane, without voids or folds. Overcoat with the chosen waterproof membrane.

Application:

All usual substrates, which are correctly prepared and suitable for use with the installation of waterproof membranes or tiled finishes in the appropriate wet duty classes (ZDB data sheet 'bonded waterproof membranes'). Fine, non-penetrative cracks on the surface of < 0.1 mm are acceptable.



1 Load-bearing substrate



2 Cleaning the wall substrate



3 Priming the substrate, e.g. with ASO®-Unigrund



4 Bonding the ASO®-DB-Standard into the first coat of the waterproofing membrane



5 Application of the first coat of waterproofing membrane



6 Allow the first coat to dry



7 Application of the second coat of waterproofing membrane



8 Completed bonded waterproof membrane