

Product information

Tile adhesives

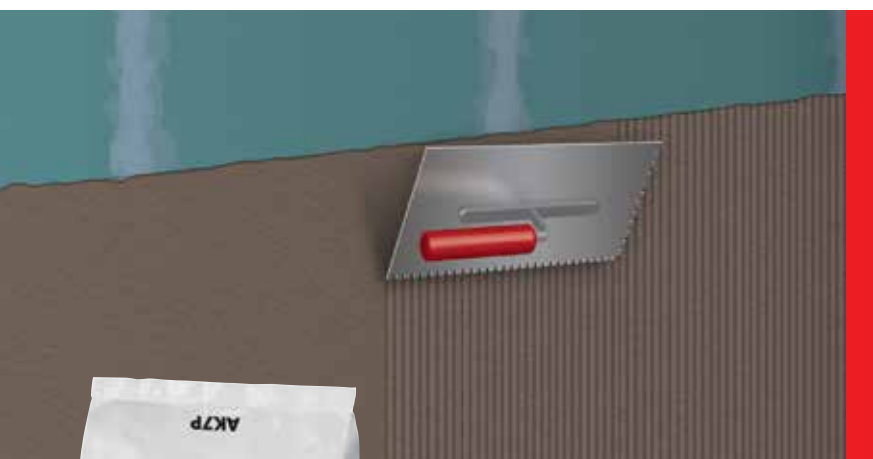
AK7P

**Flexible thin bed adhesive
grey, C2 TE**

Technical Data:

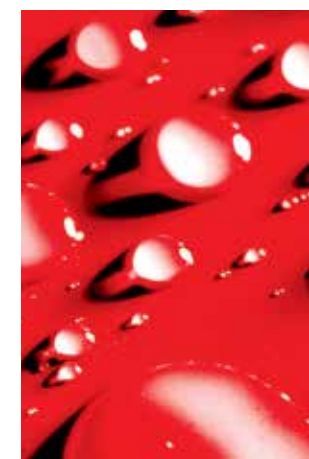
Mixing ratio:	7-8.25 l water : 25 kg AK7P
Substrate/Application temperature:	+5°C to + 25°C
Open time*:	approx. 20-30 mins
Foot traffic/ ready to grout*:	after approx. 24 hrs
Consumption:	approx. 2.1 kg/ m ² with a 6 mm notched trowel approx. 2.8 kg/ m ² with an 8 mm notched trowel approx. 3.5 kg/ m ² with a 10 mm notched trowel
Full service conditions*:	after approx. 7 days
Reaction to fire:	A1/A1 _{fl}
Packaging:	25 kg plastic bag

*These values relate to +23° C and 50% relative humidity.



Areas of application:

- AK7P is used for the thin-bed installation of porcelain, vitrified, earthenware tiles and other ceramic finishes, mosaics, and natural stone, which is neither prone to discolouration nor translucent.
- AK7P is suitable for all substrates in accordance with DIN 18157, part 1, e.g. concrete, aerated concrete, render, plaster, cement-based and calcium sulphate (flow) screeds, both heated and unheated, masonry work, moisture resistant plasterboard and gypsum fibreboard, composite boards in extruded or expanded polystyrene with a mortar coating and reinforcing mesh, etc.
- For tiling over mineral-based or dispersion-based SCHOMBURG bonded waterproof membranes.



AK7P

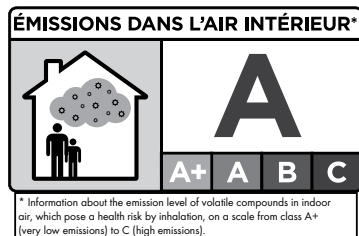


Flexible thin bed adhesive grey, C2 TE

Properties:

- Up to 6 mm adhesive bed thickness
- Particularly good non-slump
- Easy application
- Long open time
- For porcelain tiles
- Suitable for heated screeds
- For exterior and interior use
- Conforms to DIN EN 12004 C2 TE

CE	
SCHOMBURG GmbH & Co. KG Aquafinstraße 2-8 D-32760 Detmold 04 2 01000 EN 12004 AK7P Cement-based adhesive with increased performance for the installation of tiles in interior and exterior areas	
C2	
Reaction to fire:	Class A1/A1 ₁
Bond strength, as tensile adhesion strength after dry storage:	≥ 1 N/mm ²
Durability, as tensile adhesion strength after water immersion:	≥ 1 N/mm ²
tensile adhesion strength after warm storage:	≥ 1 N/mm ²
tensile adhesion strength after freeze/thaw cycles:	≥ 1 N/mm ²



Product application:

Mix AK7P with clean water in a clean mixing bucket until homogenous. Mix ratio: 7.0–8.25 litres water : 25 kg AK7P. Allow to stand for approx. 3 minutes then remix. Do not prepare more adhesive than can be used within the pot life. Spread the mixed adhesive over the substrate surface and comb through with a notched trowel suitable for the tile format. Install tiles within the adhesive open time. When installing large format tiles, we recommend the use of a highly deformable or deformable adhesive (term defined in DIN EN 12002) such as UNIFIX®-2K, UNIFIX®-2K/6, MONOFLEX-FB, MONOFLEX-XL or LIGHTFLEX®.

Application:

The substrate must be dry, load-bearing, adequately flat, free from penetrating cracks and free from separating substances such as oil, paint, laitance and loose parts. They must have a largely closed surface with a surface strength and condition commensurate with their type. When installing tiles, the substrate, substrate preparation and product application must conform to DIN 18157, part 1. Prime porous substrates with ASO®-Unigrund. Heated floors are to be heated prior to installing tiles. The readiness of a substrate to receive finishes is to be determined by the carbide (CM) method and may not fall below the following values:

- CT ≤ 2.0% (when installing large format tiles 1.5%)
- CA/CFA unheated ≤ 0.5%, heated ≤ 0.3%



1 Cleaned, load-bearing substrate ready for tiling



2 Priming the substrate, e.g. with ASO®-Unigrund



3 Adding the adhesive to a clean mixing bucket



4 Mixing the adhesive



5 Setting out the wall



6 Combing out the adhesive bed



7 Fixing the wall tiles



8 Priming the substrate, e.g. with ASO®-Unigrund



9 Setting out the floor



10 Combing out the adhesive bed



11 Applying a contact layer with large format tiles



12 Laying the floor tiles



13 Finished area ready for use