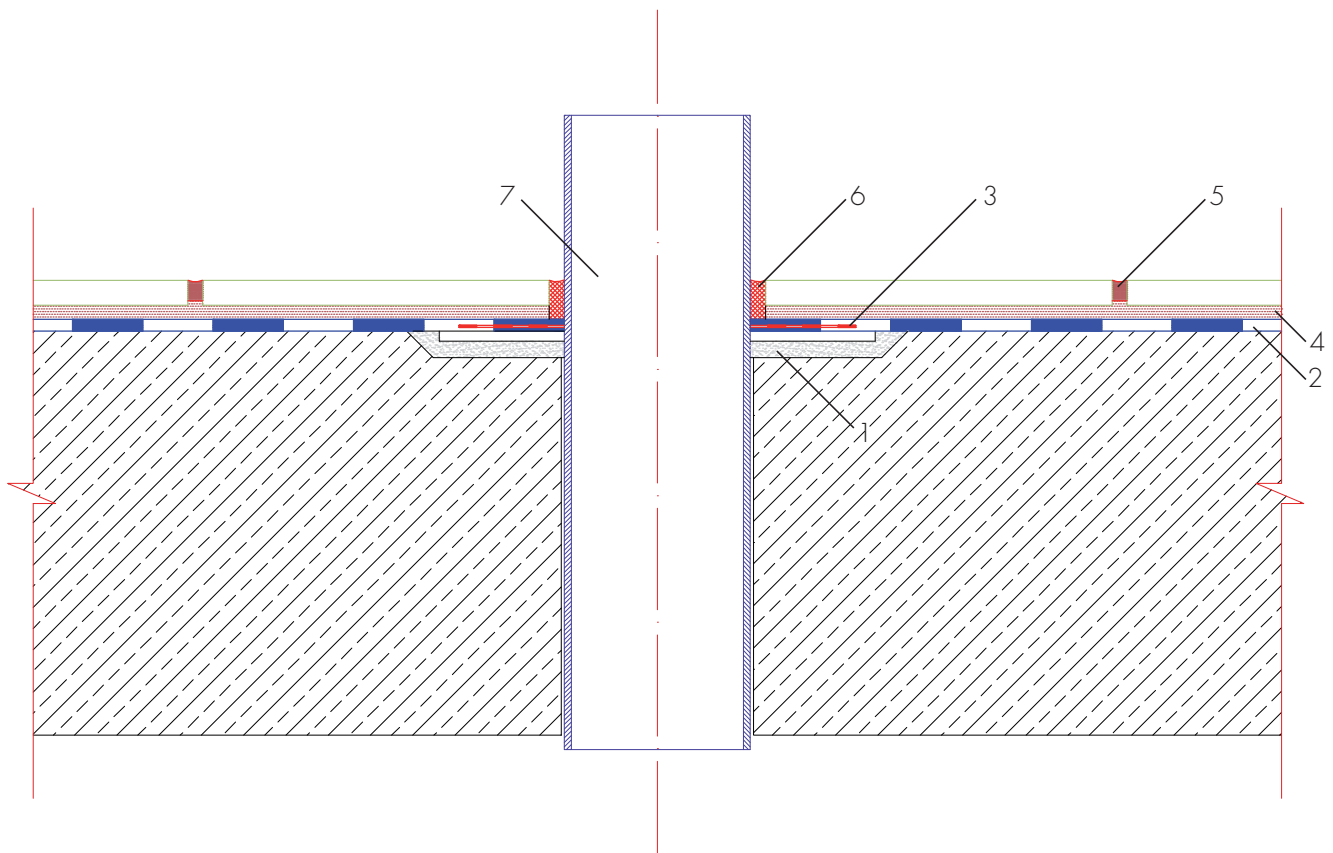


Waterproofing of conduit pipe penetrations in industrial use, i.e. commercial kitchens, breweries, etc. - chemical resistance - Exposure class C



- 1 INDUFLOOR-IB1 225-Mortar
- 2 ASOFLEX-AKB waterproofing with INDUFLOOR-IB1 225 as primer, Primer-2000 in flange contact areas
- 3 ASO-Joint-Sleeve-Floor embedded in waterproofing
- 4 ASODUR-EK98 tile adhesive
- 5 Tile joints grouted with ASODUR-EK98
- 6 ESCOSIL-2000 elastic sealant
- 7 Stainless steel pipe with flange