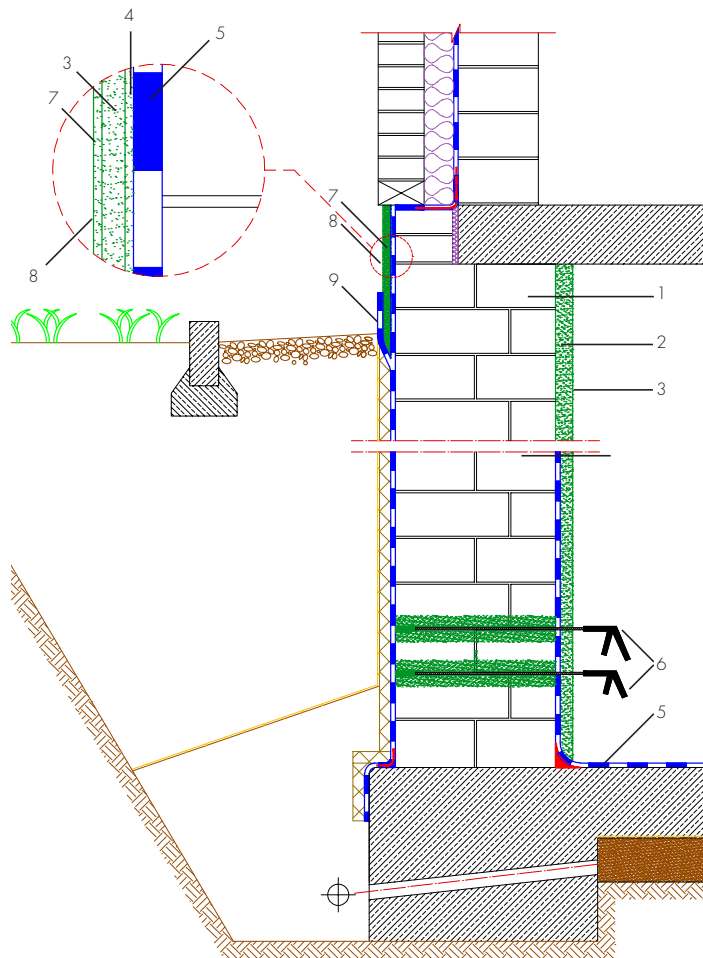


External waterproofing and horizontal barrier from inside



1. Salt treatment with ESCO-FLUAT
2. Semi-covered rough cast THERMOPAL-SP
3. Restoration plaster THERMOPAL-SR24 or THERMOPAL-SR44
4. Fully-covered rough cast THERMOPAL-SP
5. Waterproofing AQUAFIN-1K + AQUAFIN-2K/M
6. Horizontal barrier with AQUAFIN-F or AQUAFIN-IB2

<u>Horizontal barrier:</u>	With pressure:
Hole depth:	brick ./ . 5 cm
Hole distance:	10 - 12 cm
Height offset:	8 cm
7. Fine plaster THERMOPAL-FS33
8. Silicate colour ADICOR-SK
9. AQUAFIN-2K/M