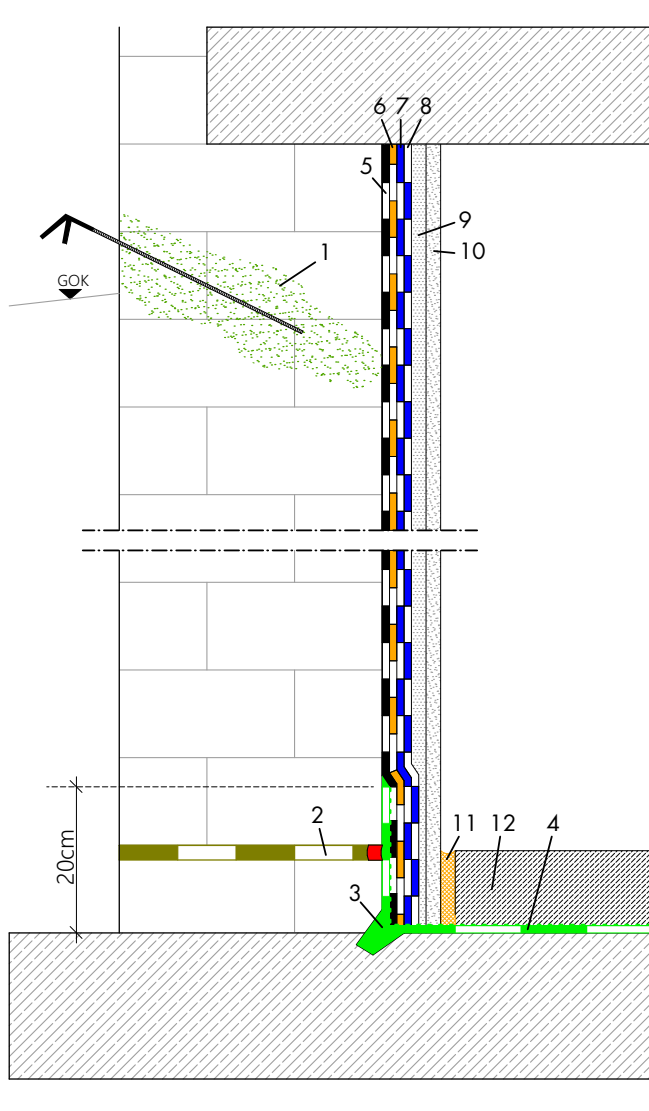


Waterproofing on non-crack-prone substrates with subsequent floor levelling for mechanically stressed areas



- 1 Borehole barrier AQUAFIN-F or AQUAFIN-i380
- 2 If necessary, pulp liner in 2/2 cm grooves and apply stiff plastic ASOCRET-M30
- 3 Apply a capillary-breaking joint sealant with ASODUR-SG2-thix and quartz sand of 0.1 - 0.6 mm grain size, followed by the formation of the sealing fillet
- 4 Prime the floor surfaces and 20 cm in the wall-sole area with ASODUR-SG2-thix; Afterwards, the primer must be sanded with quartz sand with a grain size of 0.5 - 1.0 mm
- 5 (Optionally, for break-outs > 5 mm, prepare a subfloor levelling with ASOCRET-M30)
- 6 Waterproofing exposed, load-bearing wall surfaces with AQUAFIN-1K; After curing, apply a second or, if necessary, a third coat of AQUAFIN-1K
- 7 Waterproof the wall surfaces with AQUAFIN-RB400
- 8 Waterproof the wall surfaces with AQUAFIN-RB400
- 9 Apply splatterdash coat with THERMOPAL-SP
- 10 Plaster wall surfaces with THERMOPAL-ULTRA; A fine filler with THERMOPAL-FS33 is optionally available as a final coat
- 11 Set edging strip (RD-SK50)
- 12 Install floor levelling compound for mechanically stressed areas ASOCRET-HFF

Please notice the current technical data sheets. You can find them at: www.schomburg.com