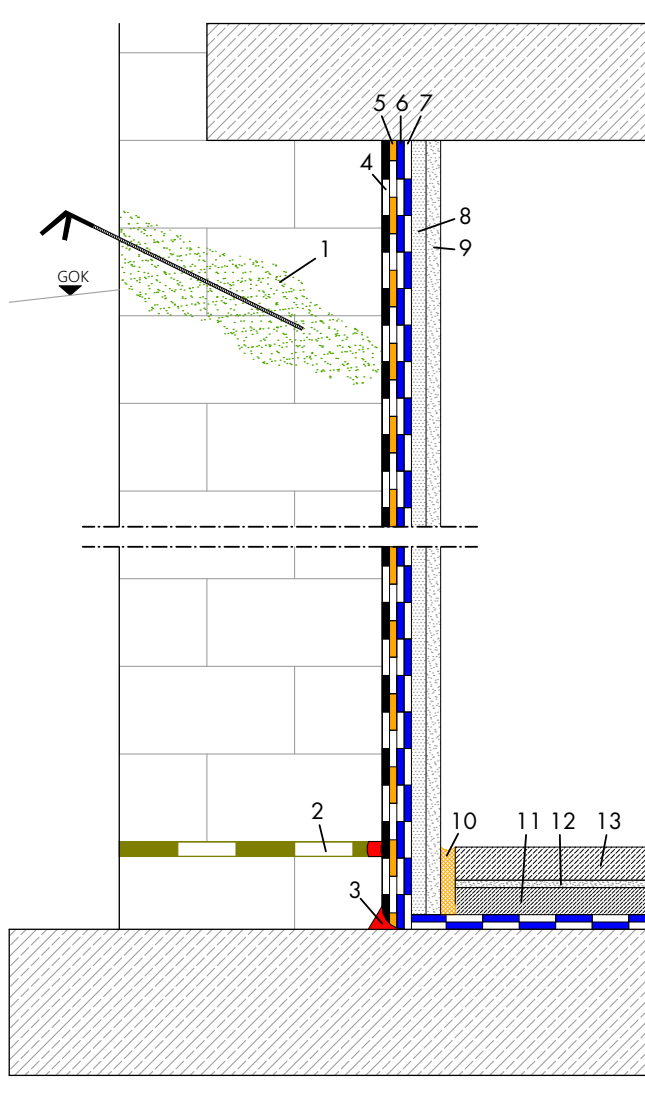


Waterproofing on crack-prone substrates with subsequent floor levelling for mechanically stressed areas



- 1 Borehole barrier AQUAFIN-F or AQUAFIN-i380
- 2 If necessary, pulp liner in 2/2 cm grooves and apply stiff plastic ASOCRET-M30
- 3 Make the sealing fillet from ASOCRET-M30
- 4 (Optionally, for break-outs >5 mm, prepare a subfloor levelling with ASOCRET-M30)
- 5 Waterproofing exposed, load-bearing wall surfaces with AQUAFIN-1K;
 After curing, apply a second or, if necessary, a third coat of AQUAFIN-1K
- 6 Waterproof the wall and floor surfaces with AQUAFIN-RB400
- 7 Waterproof the wall and floor surfaces with AQUAFIN-RB400
- 8 Apply splatterdash coat with THERMOPAL-SP
- 9 Plaster wall surfaces with THERMOPAL-ULTRA;
 A fine filler with THERMOPAL-FS33 is optionally available as a final coat
- 10 Set edging strip (RD-SK50)
- 11 Install screed (ASO-SEM)
- 12 Prime floor surfaces with ASODUR-SG2/-SG3 or ASO-Unigrund-GE/-K
- 13 Install floor levelling compound for mechanically stressed areas (ASOCRET-HFF)

Please notice the current technical data sheets. You can find them at: www.schomburg.com

The rights of the buyer with regard to the quality of our materials are based on our terms and conditions of sale and delivery. This description is a non-binding sample description. It does not claim to be complete. This description does not release the user from their duty of care. This version becomes invalid in the event of a new version being issued.