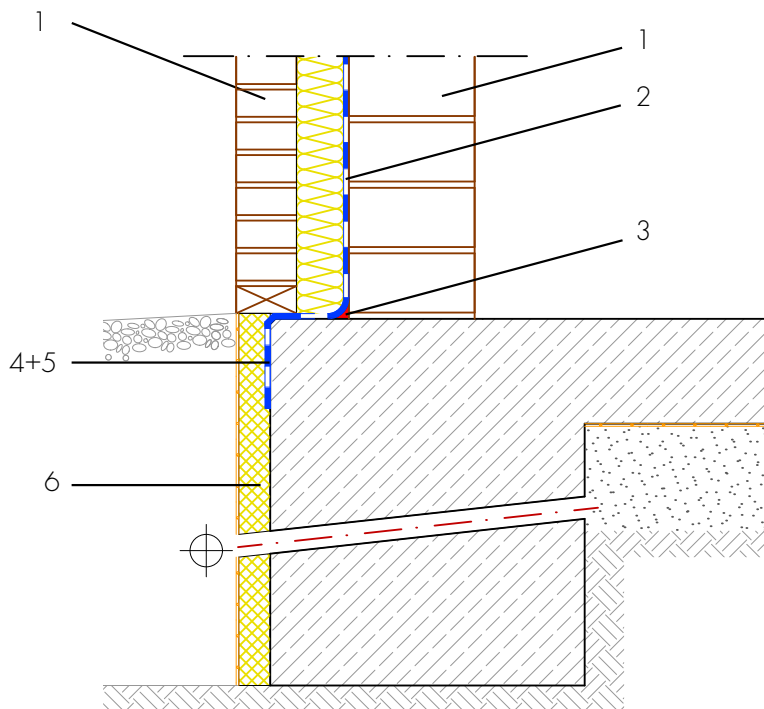


Technical Drawing 1.4.3

New build skirting waterproofing without basement

Double-shell masonry



- 1 Backing masonry/front wall shell
- 2 Waterproofing from spray water at the wall skirting - AQUAFIN-RB400 - Protection of the building envelope from damp and foreign matter
- 3 Sealing cove radius 4-6 cm - ASOCRET-M30 - Sealing cove in the wall/base transition and all internal corners made of water-repellent mortar to accommodate the waterproofing
- 4 Building waterproofing in contact with the ground - AQUAFIN-RB400 - Two-layer waterproofing to protect the building envelope from moisture and water
- 5 Waterproofing on front side of floor slab - AQUAFIN-RB400 - Waterproofing the front side of the floor slab/ foundations to safeguard the transition to the wall material
- 6 Protection of the waterproofing - Insulation, protection and drainage boards - Protects the waterproofing from damage