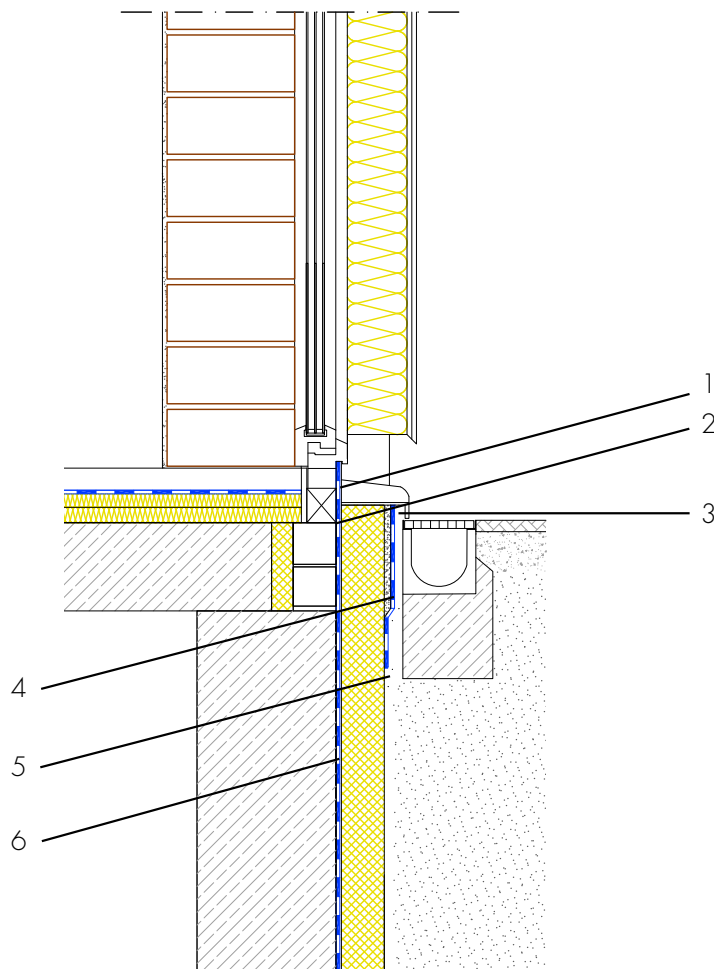


Ground-level element, concrete basement with perimeter insulation

Single-shell masonry with composite thermal insulation system



- 1 Connection of ground-level element
- ASO-Joint-Tape-2000-Sanitary -
connection of the ground-level element
to the building waterproofing with a joint
tape with self-adhesive strip
- 2 Waterproofing from spray water at
the wall skirting - AQUAFIN-RB400 -
Protection of the building envelope from
damp and foreign matter
- 3 Building skirt render - ASOCRET-M30
- Protection of the waterproofing
from damage and visual design of the
building skirt area
- 4 Moisture protection - AQUAFIN-RB400
- Protection of the building skirt render
from water penetration from behind
- 5 Protection of the waterproofing -
Insulation, protection and drainage
boards - Protects the waterproofing from
damage
- 6 Building waterproofing in contact with the
ground - AQUAFIN-RB400 - Two-layer
waterproofing to protect the building
envelope from moisture and water