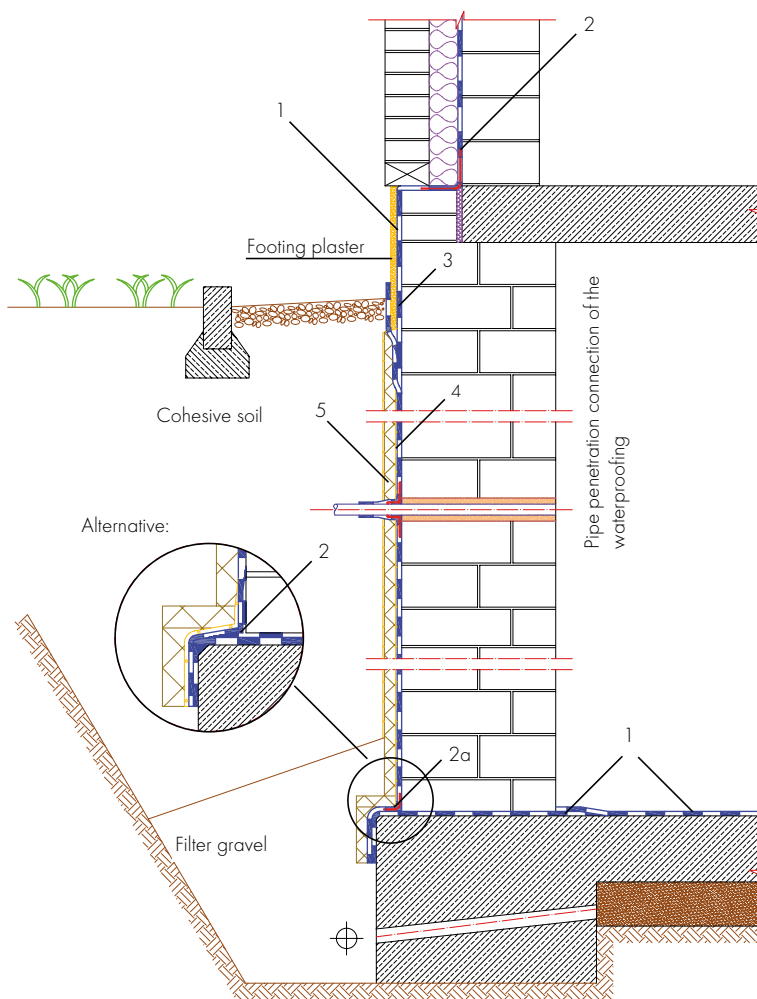


Exterior basement waterproofing with COMBIFLEX®-High Build System

in accordance with DIN 18533 water exposure class W1.1-E, W1.2-E, W2.1-E and WTA leaflet 4-6



- 1 Waterproofing on the floor slab and in the plinth area transition with AQUAFIN-RS300 or AQUAFIN-2K/M-PLUS (dry film thickness = 2 mm)
- 2 Waterproofing of the covered fillet, consisting of ASOCRET-M30 (radius 4-6 cm), with flexible sealing slurry
- 3 Waterproofing with COMBIFLEX thick layer coating system, if necessary including ASO-Systemvlies coating
- 4 Waterproofing protection layer through suitable measures

Alternative:

- 2a Waterproofing of the wall-floor transition with flexible waterproofing slurry and a suitable SCHOMBURG joint tape (see technical data sheet) is possible after special agreement.