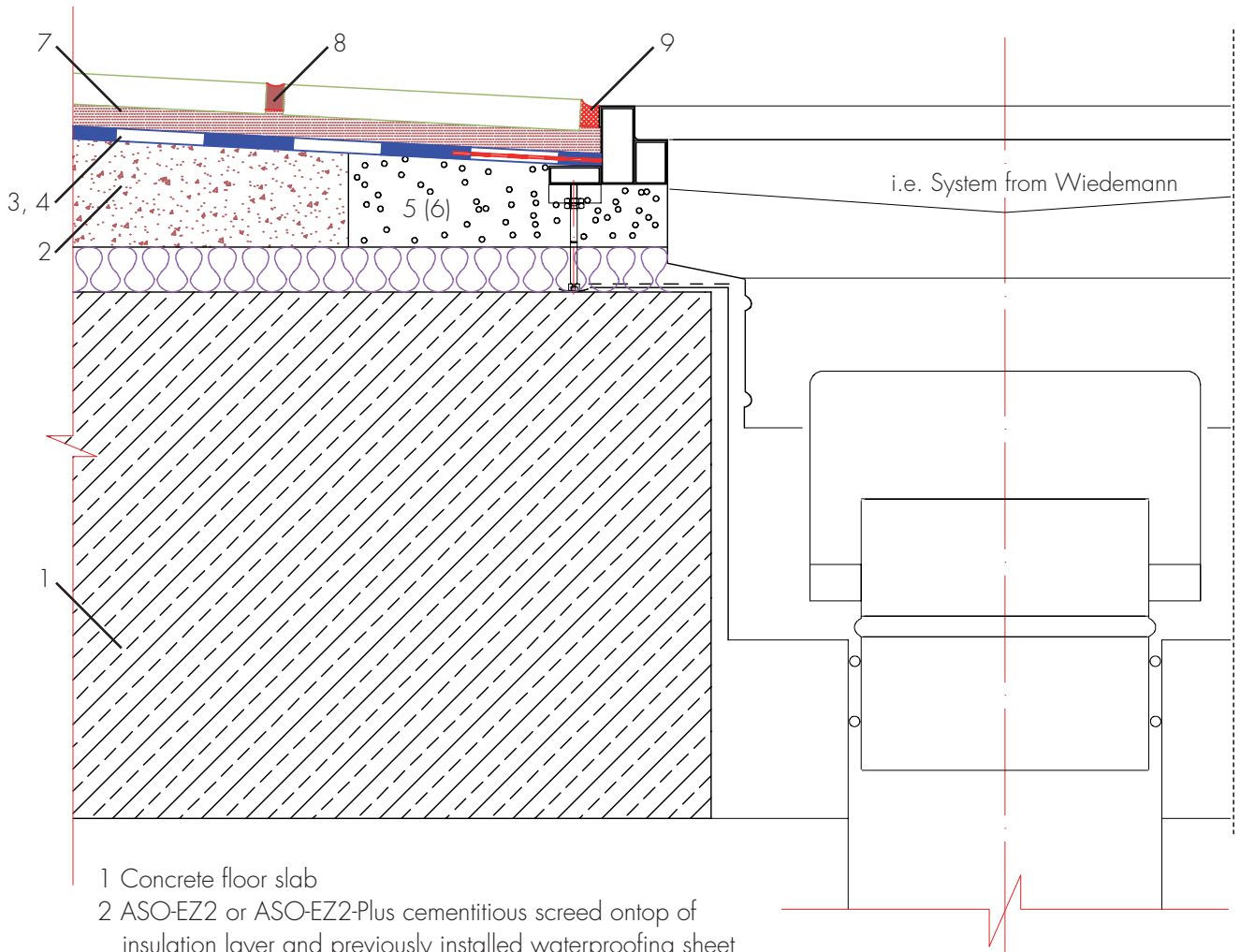


Detail waterproofing of floor inlet drain in kitchens - screed on insulation layer - Exposure class C



- 1 Concrete floor slab
- 2 ASO-EZ2 or ASO-EZ2-Plus cementitious screed on top of insulation layer and previously installed waterproofing sheet membrane onto concrete slab
- 3 Screed primed with INDUFLOOR-IB1 225 incl. sand broadcast, flange primed with Primer-2000
- 4 ASOFLEX-AKB-Floor waterproofing with embedded ASO-Joint-Tape-2000-S-Wide, cut to fit drain diameter
- 5 Flowable grout INDUCRET-VK30 or INDUCRET-VK100
Alternative:
6 Filled with INDUFLOOR-IB4010 epoxy mortar
- 7 ASODURE-EK98-Floor tile adhesive
- 8 Tile joints grouted with ASODURE-EK98-Floor
- 9 INDUCRET-VK6050 sealer