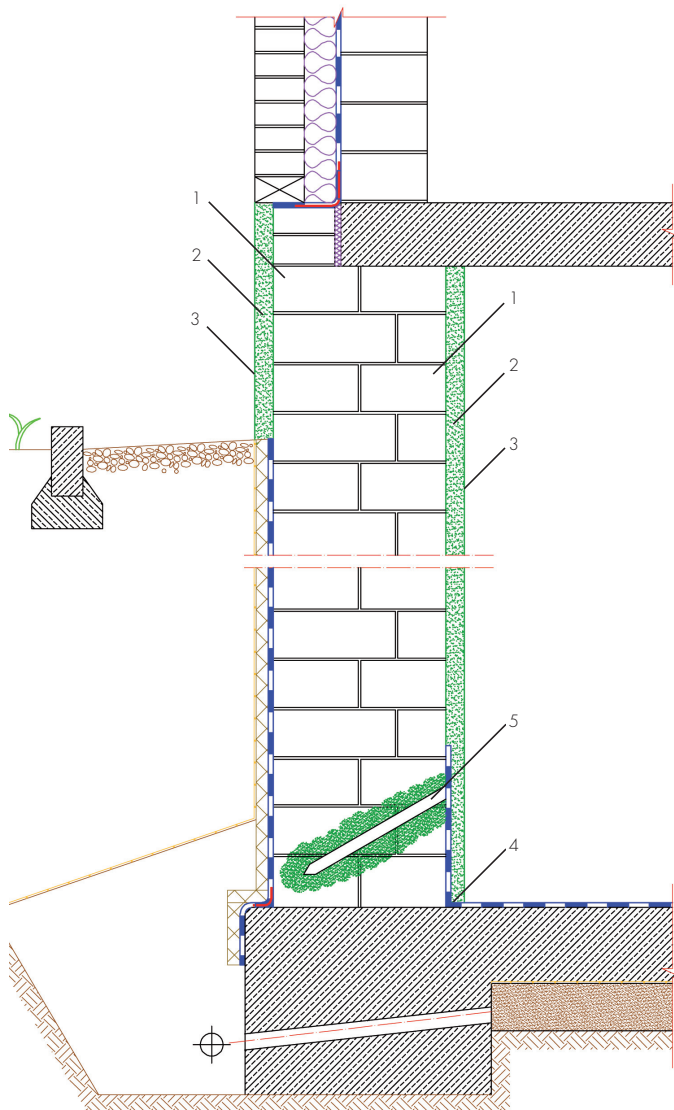


### External waterproofing and horizontal barrier from inside



1. Salt treatment with ESCO-FLUAT
2. Semi-covered rough cast THERMOPAL-SP
3. Restoration plaster with THERMOPAL-SR24 or THERMOPAL-SR44
4. Waterproofing with AQUAFIN-2K/M
5. Horizontal barrier with AQUAFIN-F or AQUAFIN-HB2

<u>Horizontal barrier:</u>	Without	With pressure
Hole diameter:	30 mm	12 - 18 mm
Hole incline:	30° - 45°	0° - 30°
Hole depth:	brick ./ 5 cm	
Hole distance:	15 cm	10 - 12 cm