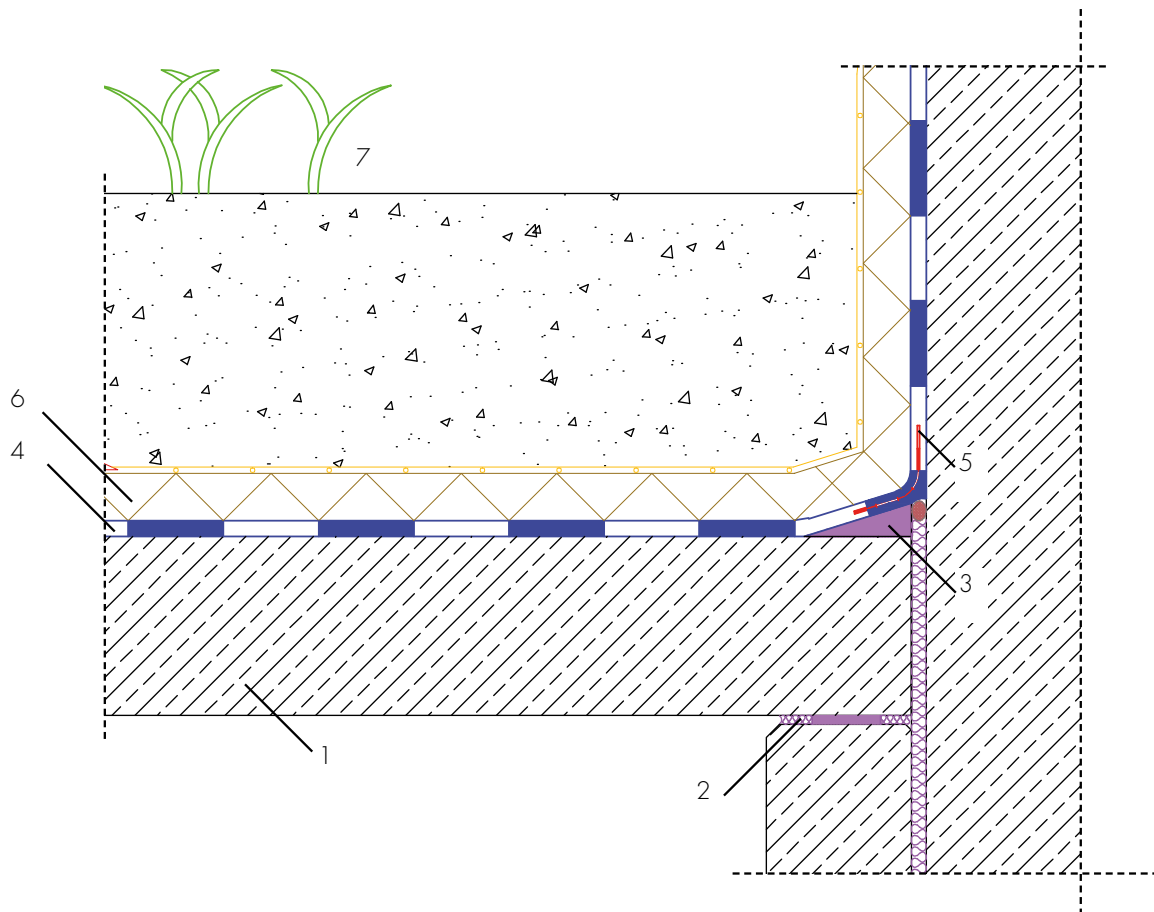


Waterproofing of a wall transition to an underground garage ceiling with AQUAFIN-RS300 or AQUAFIN-2K/M-PLUS



- 1 Reinforced concrete wall or ceiling
- 2 Construction joint or slide bearing
- 3 Mortar gusset from ASOCRET-M30
- 4 Waterproofing with AQUAFIN-RS300 or AQUAFIN-2K/M-PLUS
- 5 ASO-Joint-Tape-2000-S inlay
- 6 Drainage and protective layer
- 7 Extensive vegetation