

Technical Drawings

Concrete construction waterproofing system



Planning details in the waterproofing system for concrete construction

SCHOMBURG offers its customers a comprehensive range of sealing solutions. From cementitious mineral and bituminous waterproofing to integral crystalline waterproofing of concrete building components and membrane waterproofing, for example with fresh concrete composite systems.

In terms of cost-effectiveness and the improvement in building component properties the integral concrete waterproofing with the crystalline concrete admixture BETOCRETE certainly stands out. When using BETOCRETE products the cracks in a "watertight" concrete can grow closed due to the increased and accelerated crack healing ability on contact with water. In addition, the concrete becomes "more resistant" to attacks from the environment and the service life of the concrete building component is noticeably extended.

The following drawings provide assistance in the use of the fresh concrete bonded waterproofing membrane and in the use of the waterproofing accessories.



Content

Expansion joints / Construction joint

ASO®-Tape			
4	Expansion joint, wall		1.5.1.1.10
5	Construction joint, wall / slab	Retrospective execution	1.5.1.1.11
AQUAFIN®-CJ6			
6	Construction joint, wall / slab	Flush slab	1.5.1.1.11
7	Construction joint, wall / slab	Protruding floor slab	1.5.1.1.11
AQUAFIN®-CJ1			
8	Protection of construction joint with swellable waterstop tape	Flush floor slab	1.5.1.1.11
9	Protection of construction joint with swellable waterstop tape	Protruding floor slab	1.5.1.1.11
AQUAFIN®-CJ5			
10	Construction joint, wall / slab	Flush floor slab	1.5.1.1.11
11	Construction joint, wall / slab	Protruding floor slab	1.5.1.1.11

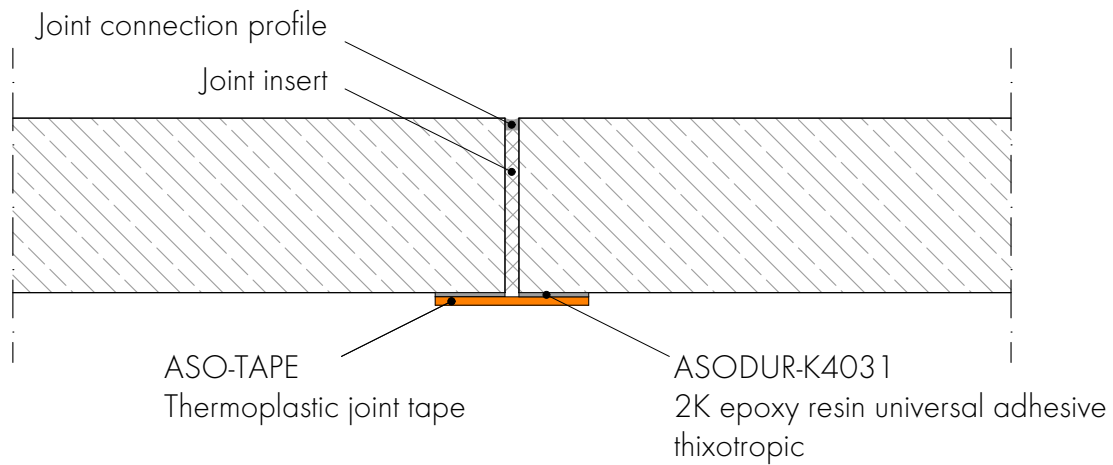
Green concrete waterproofing system

AQUAFIN®-WM12 / Surface area			
12	Membrane joint, floor		1.5.2.1.10
13	Expansion joint, floor		1.5.2.1.11
14	Horizontal construction joint		1.5.2.1.12
15	Installation against trench		1.5.2.1.13
16	Spread, wall		1.5.2.1.14
AQUAFIN®-WM12 / Penetrations			
17	Integration of bored pile, flush		1.5.2.2.11
18	Integration of bored pile		1.5.2.2.12
19	Pipe penetration, wall		1.5.2.2.13
20	Pipe penetration, floor slab		1.5.2.2.14
21	Anchor, lightning protection		1.5.2.2.15
AQUAFIN®-WM12 / Wall/Floor			
22	Connection to existing building structure		1.5.2.3.10
23	Floor/wall transition	Protruding floor slab	1.5.2.3.11
24	Wall installation with AQUAFIN®-RB400	Protruding floor slab	1.5.2.3.12
25	Floor/wall transition	Flush floor slab	1.5.2.3.13



Technical Drawing 1.5.1.1.10

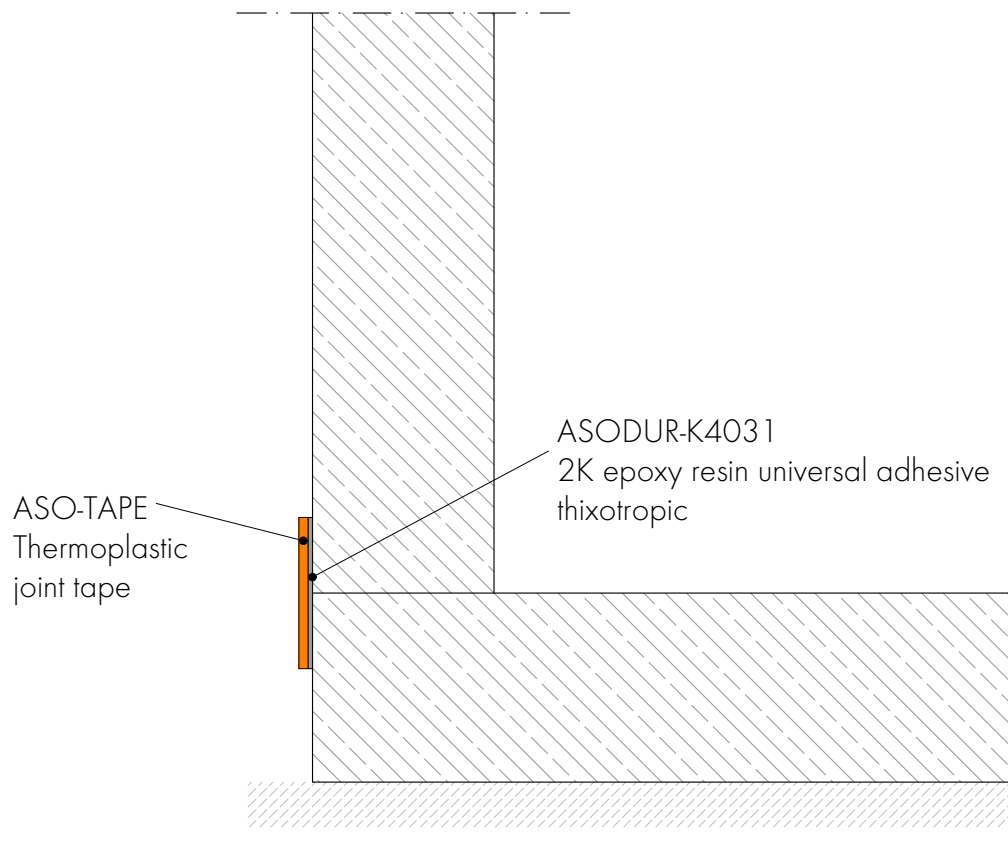
Thermoplastic joint tape
Expansion joint, wall
Retrospective execution



Overlap area ASO-TAPE / watertight concrete
>5cm up to 2bar and >20cm with water pressure 2 to 5bar



Thermoplastic joint tape
Construction joint, wall / slab
Retrospective execution



Overlap area ASO-TAPE / watertight concrete
>5cm up to 2bar and >20cm with water pressure 2 to 5bar

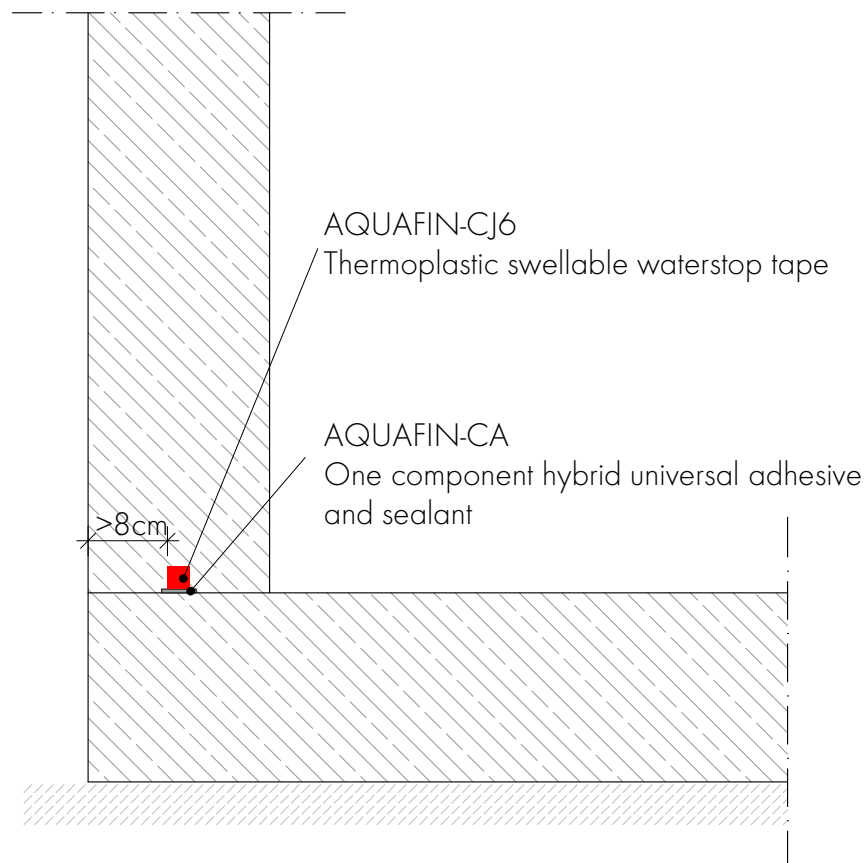


Technical Drawing 1.5.1.2.10

AQUAFIN®-CJ6 Thermoplastic swellable waterstop tape

Construction joint, wall / slab

Flush slab

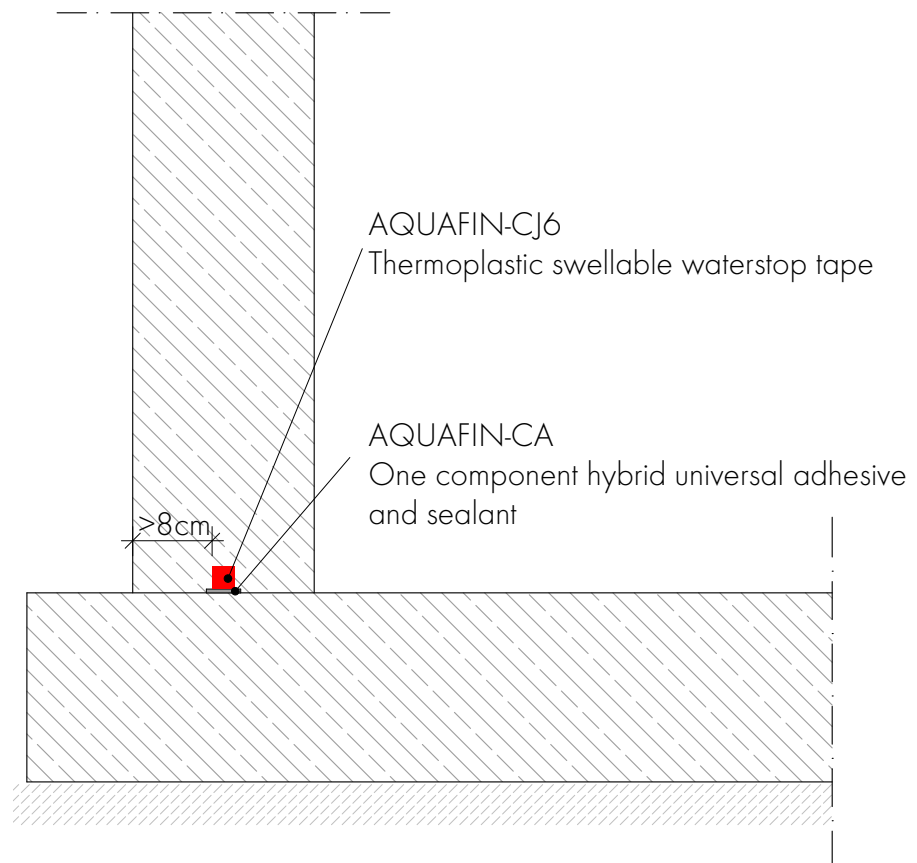




AQUAFIN®-CJ6 Thermoplastic swellable waterstop tape

Construction joint, wall / slab

Protruding floor slab



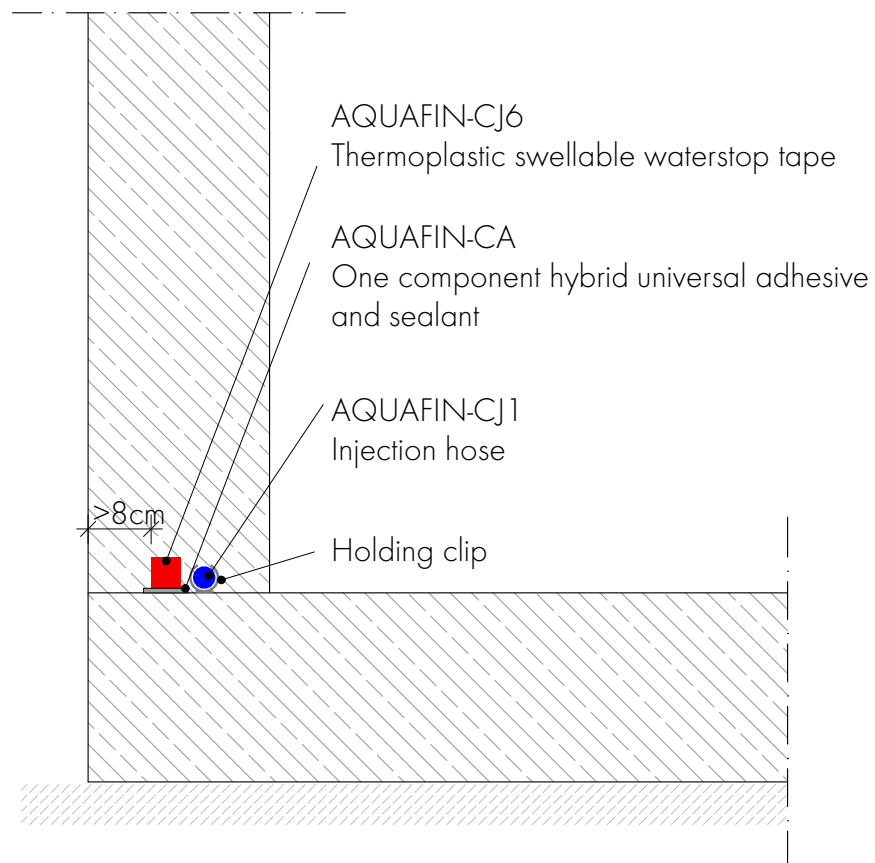


Technical Drawing 1.5.1.3.10

AQUAFIN®-CJ1 Injection hose

Protection of construction joint with swellable waterstop tape

Flush floor slab

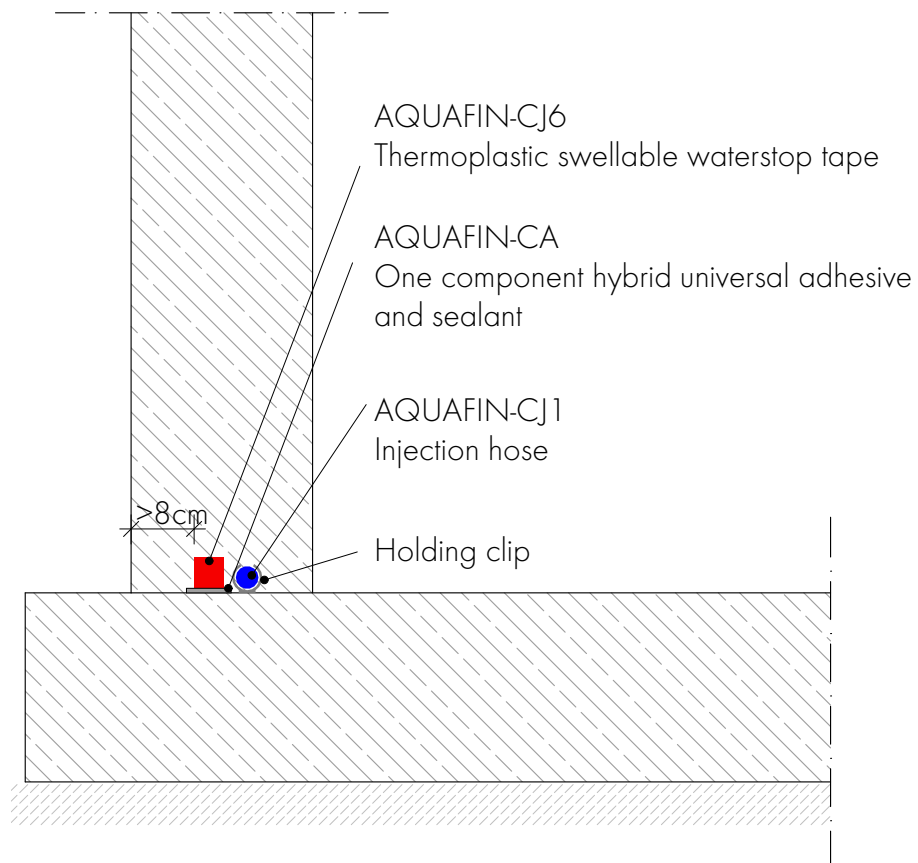




AQUAFIN®-CJ1 Injection hose

Protection of construction joint with swellable waterstop tape

Protruding floor slab



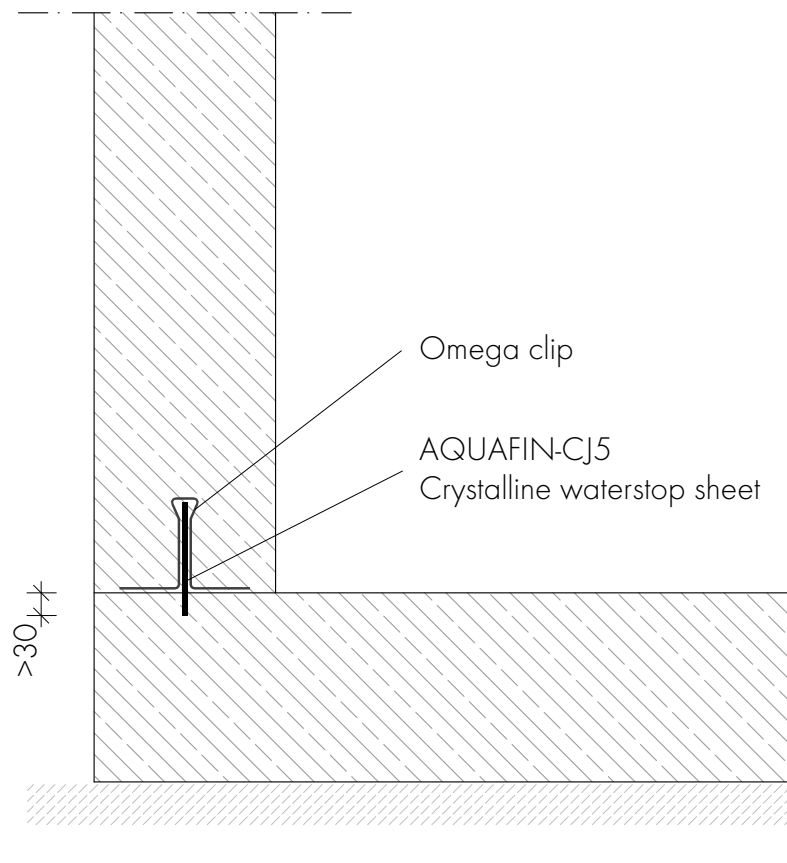


Technical Drawing 1.5.1.4.10

AQUAFIN®-CJ5 Crystalline waterstop sheet

Construction joint, wall / slab

Flush floor slab

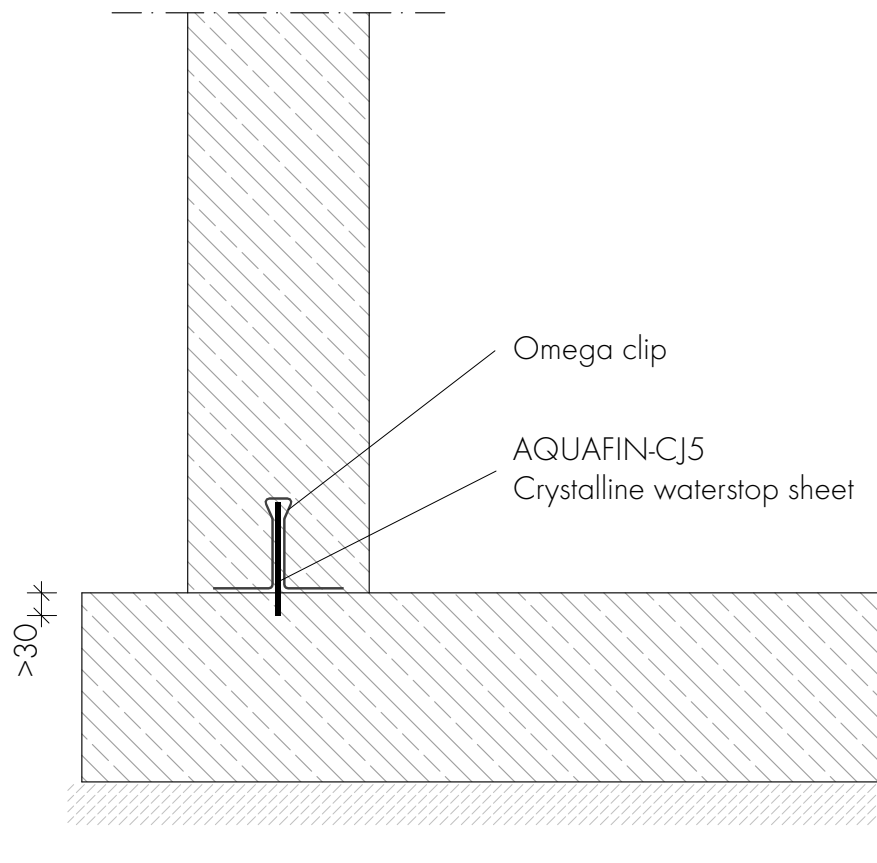




AQUAFIN®-CJ5 Crystalline waterstop sheet

Construction joint, wall / slab

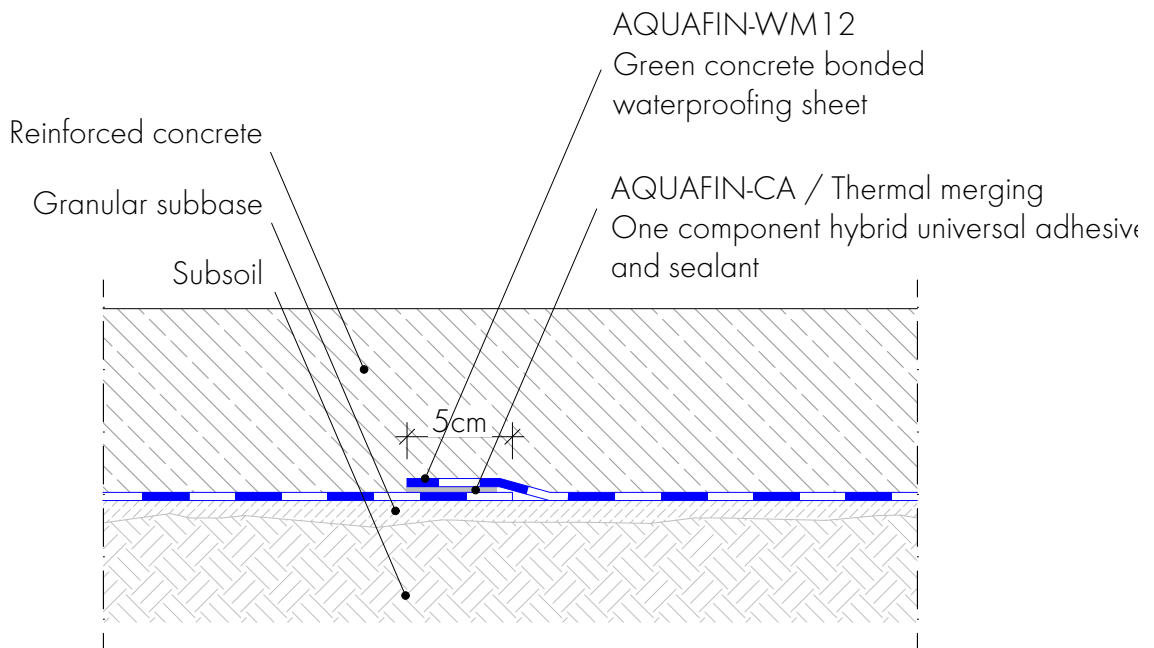
Protruding floor slab





Technical Drawing 1.5.2.1.10

AQUAFIN®-WM12 Green concrete bonded waterproofing sheet
Membrane joint, floor

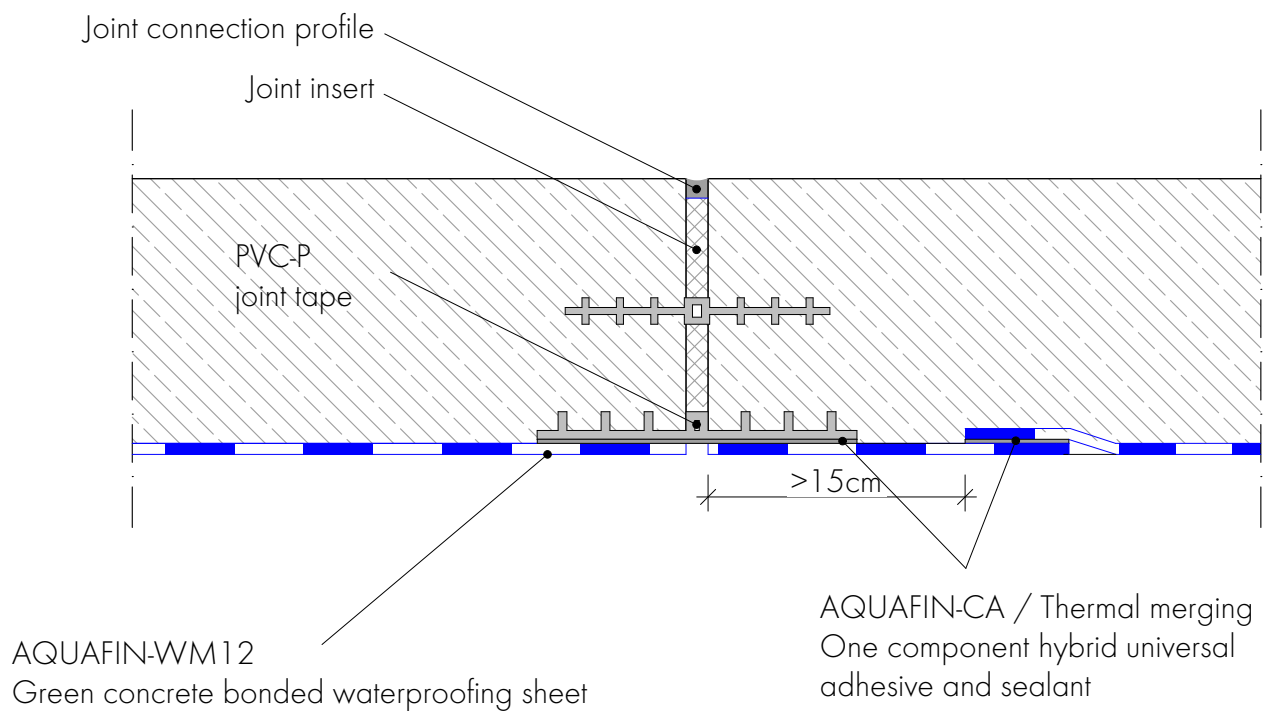


Overlap area thermal merging / bonding >4cm



AQUAFIN®-WM12 Green concrete bonded waterproofing sheet

Expansion joint, floor

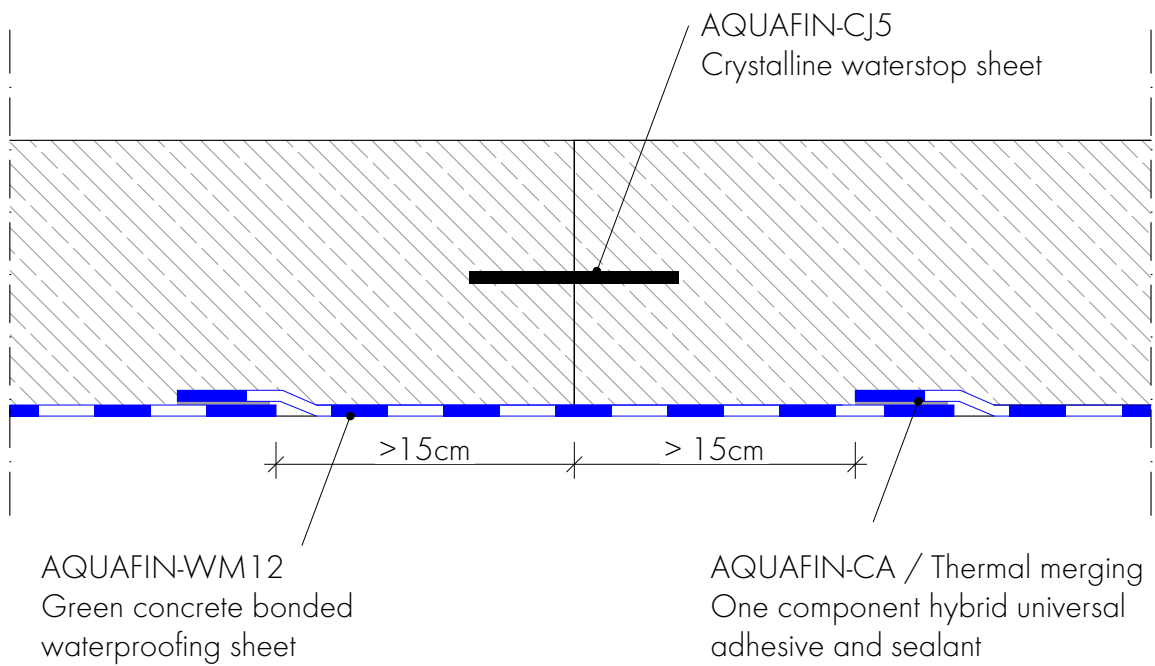


Thermal merging / bonding in the overlapping area >4cm



Technical Drawing 1.5.2.1.12

AQUAFIN®-WM12 Green concrete bonded waterproofing sheet
Horizontal construction joint

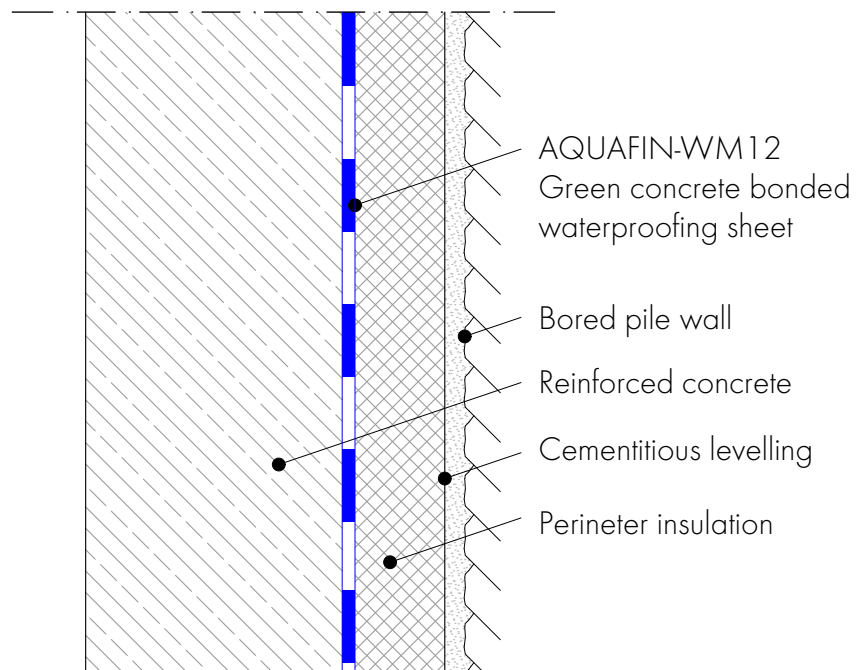


Thermal merging / bonding in the overlapping area >4cm



AQUAFIN®-WM12 Green concrete bonded waterproofing sheet

Installation against trench

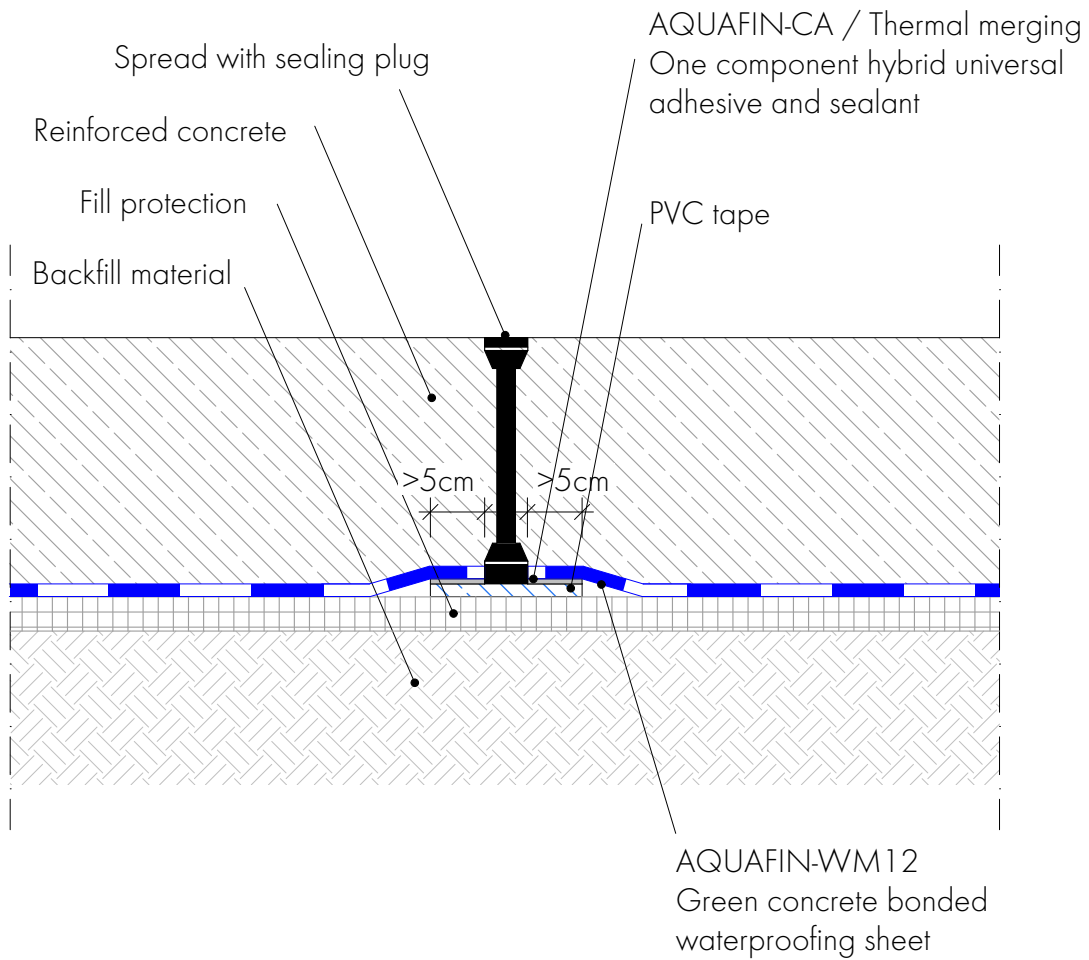




Technical Drawing 1.5.2.1.14

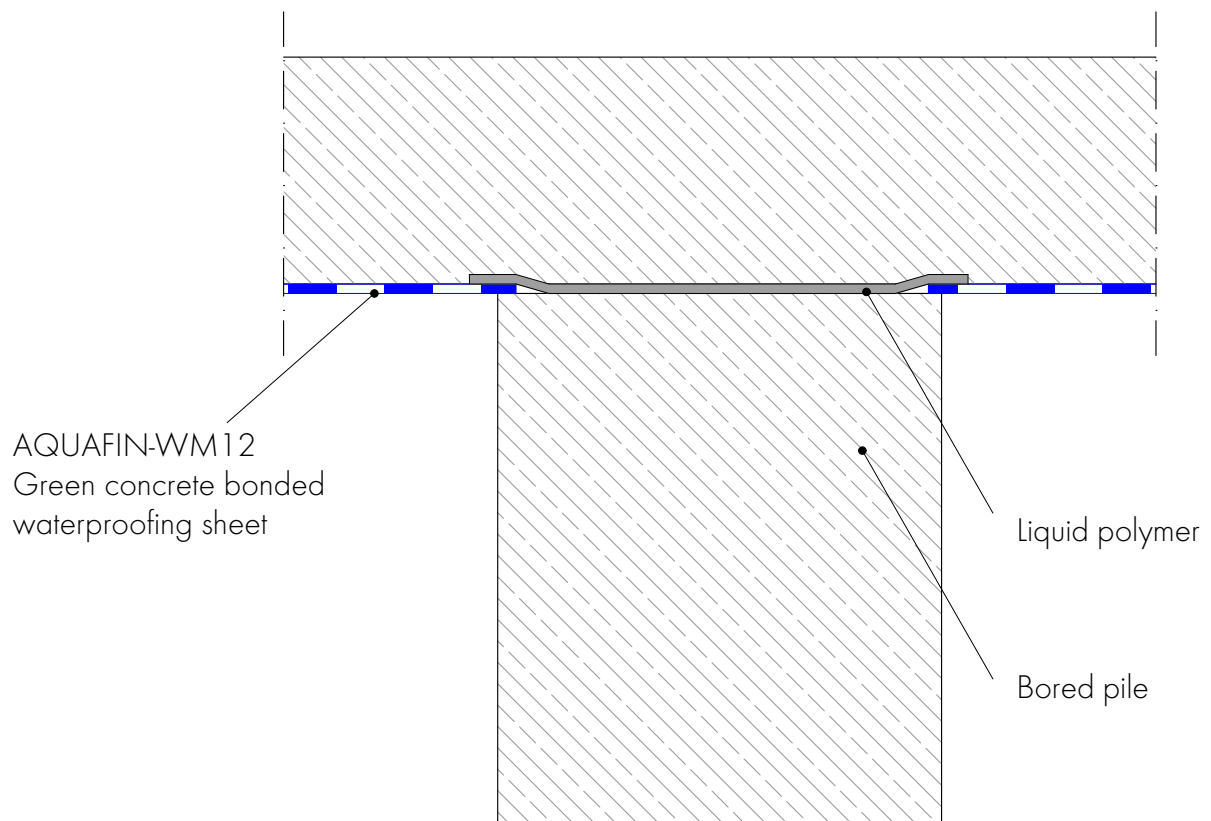
AQUAFIN®-WM12 Green concrete bonded waterproofing sheet

Spread, wall





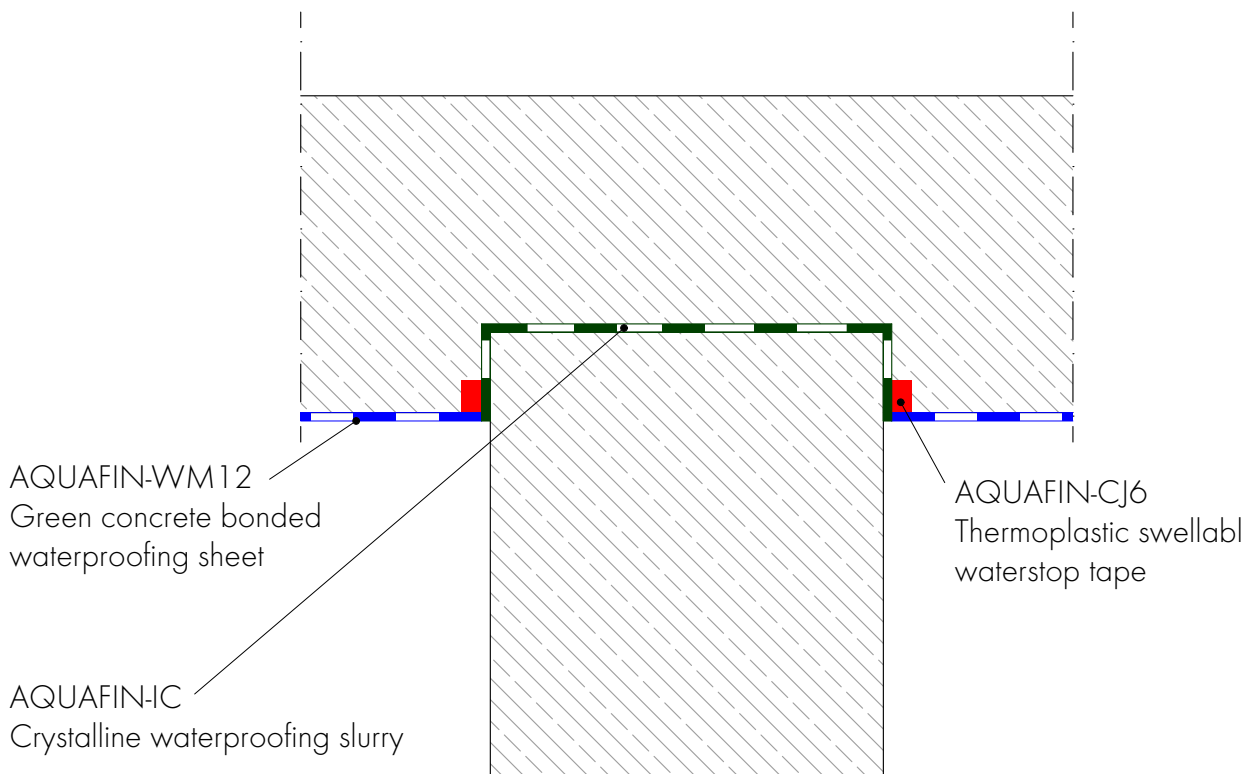
AQUAFIN®-WM12 Green concrete bonded waterproofing sheet Integration of bored pile, flush





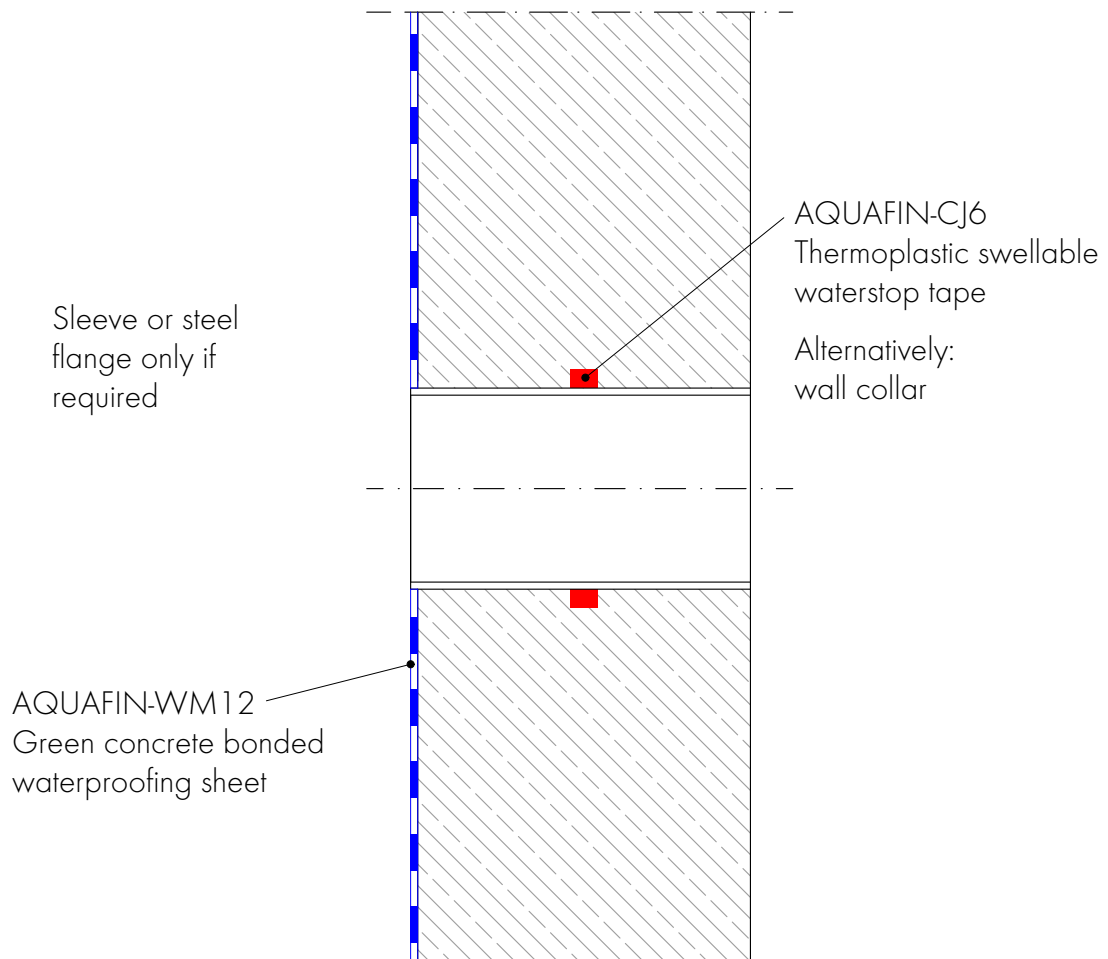
Technical Drawing 1.5.2.2.12

AQUAFIN®-WM12 Green concrete bonded waterproofing sheet
Integration of bored pile





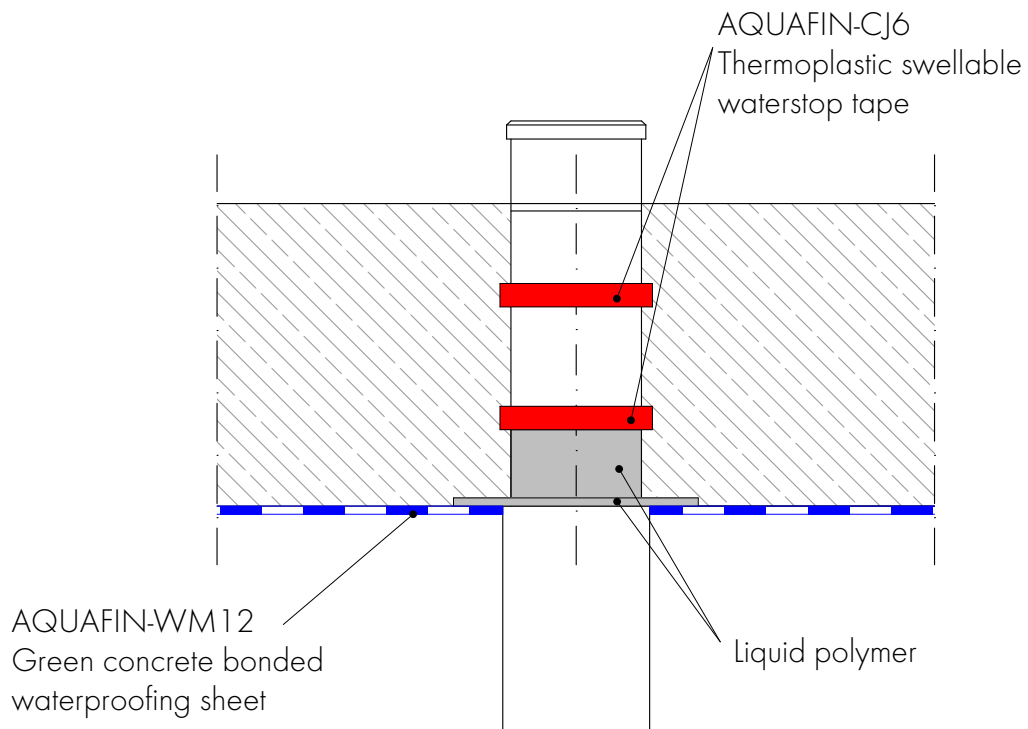
AQUAFIN®-WM12 Green concrete bonded waterproofing sheet **Pipe penetration, wall**





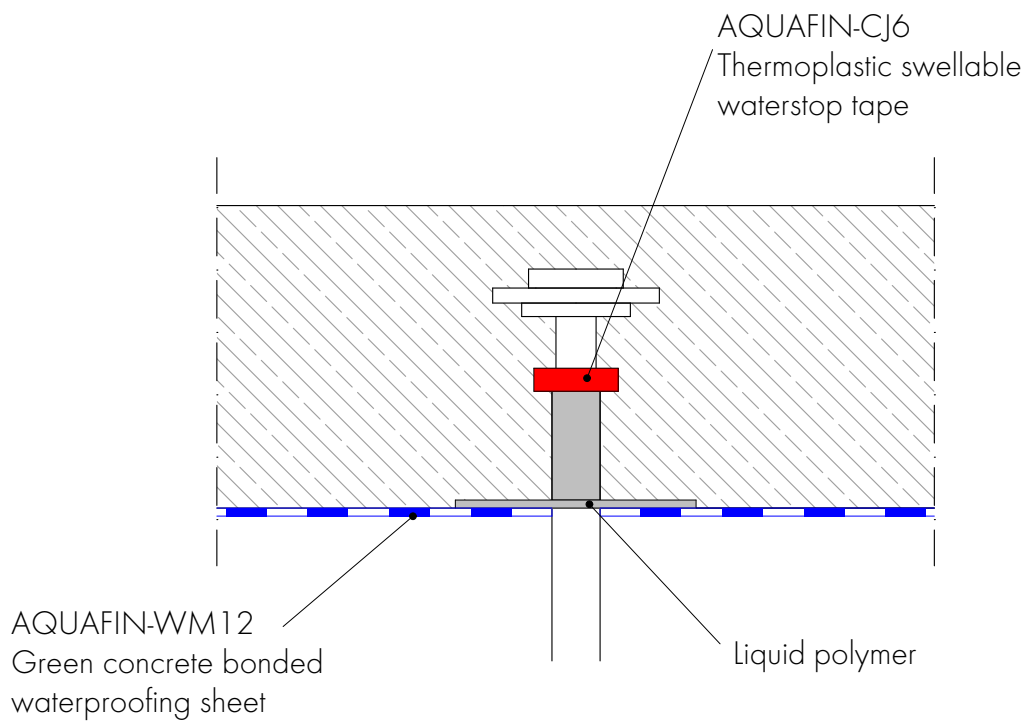
Technical Drawing 1.5.2.2.14

AQUAFIN®-WM12 Green concrete bonded waterproofing sheet
Pipe penetration, floor slab





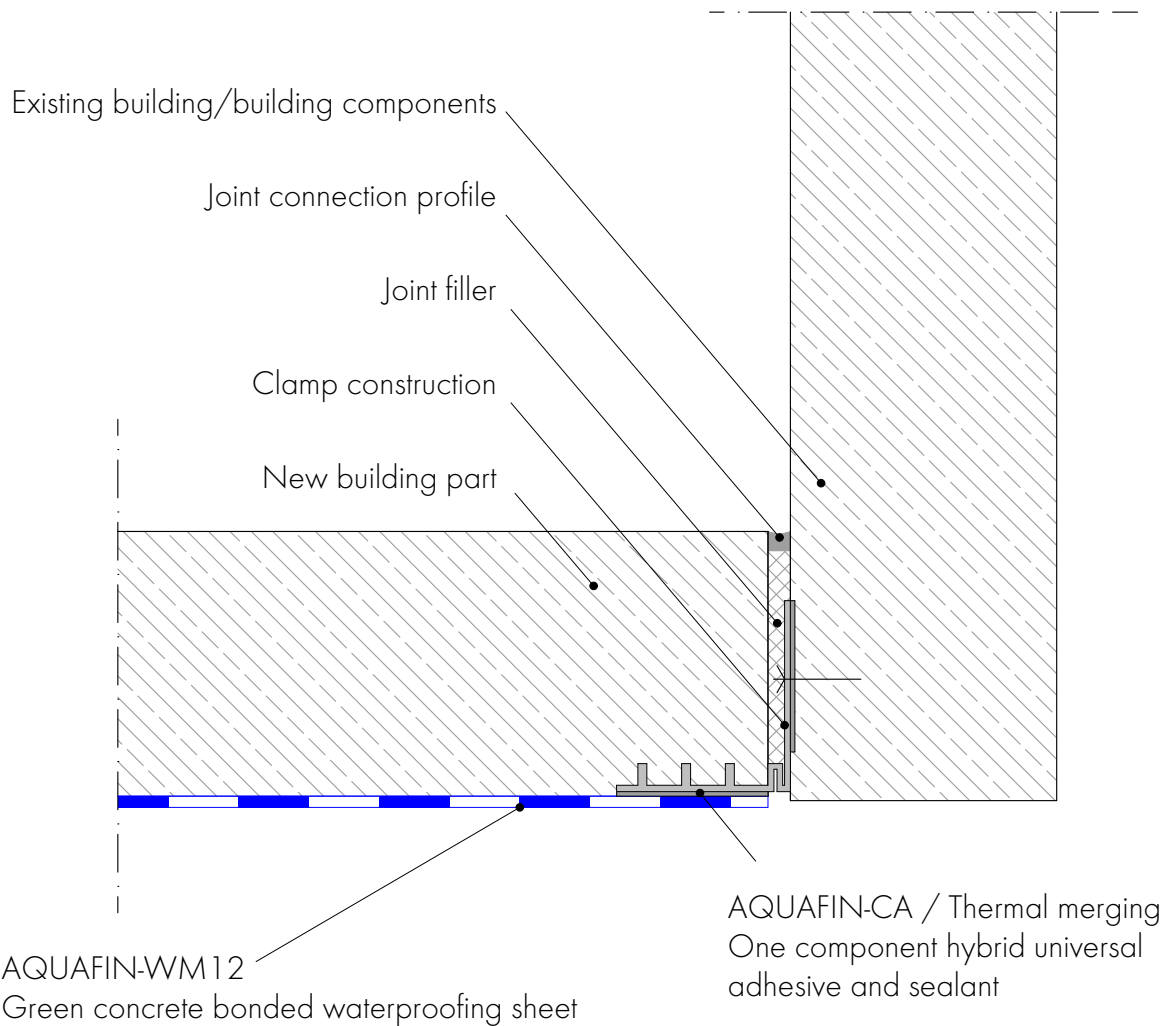
AQUAFIN®-WM12 Green concrete bonded waterproofing sheet **Anchor, lightning protection**





Technical Drawing 1.5.2.3.10

AQUAFIN®-WM12 Green concrete bonded waterproofing sheet **Connection to existing building structure**

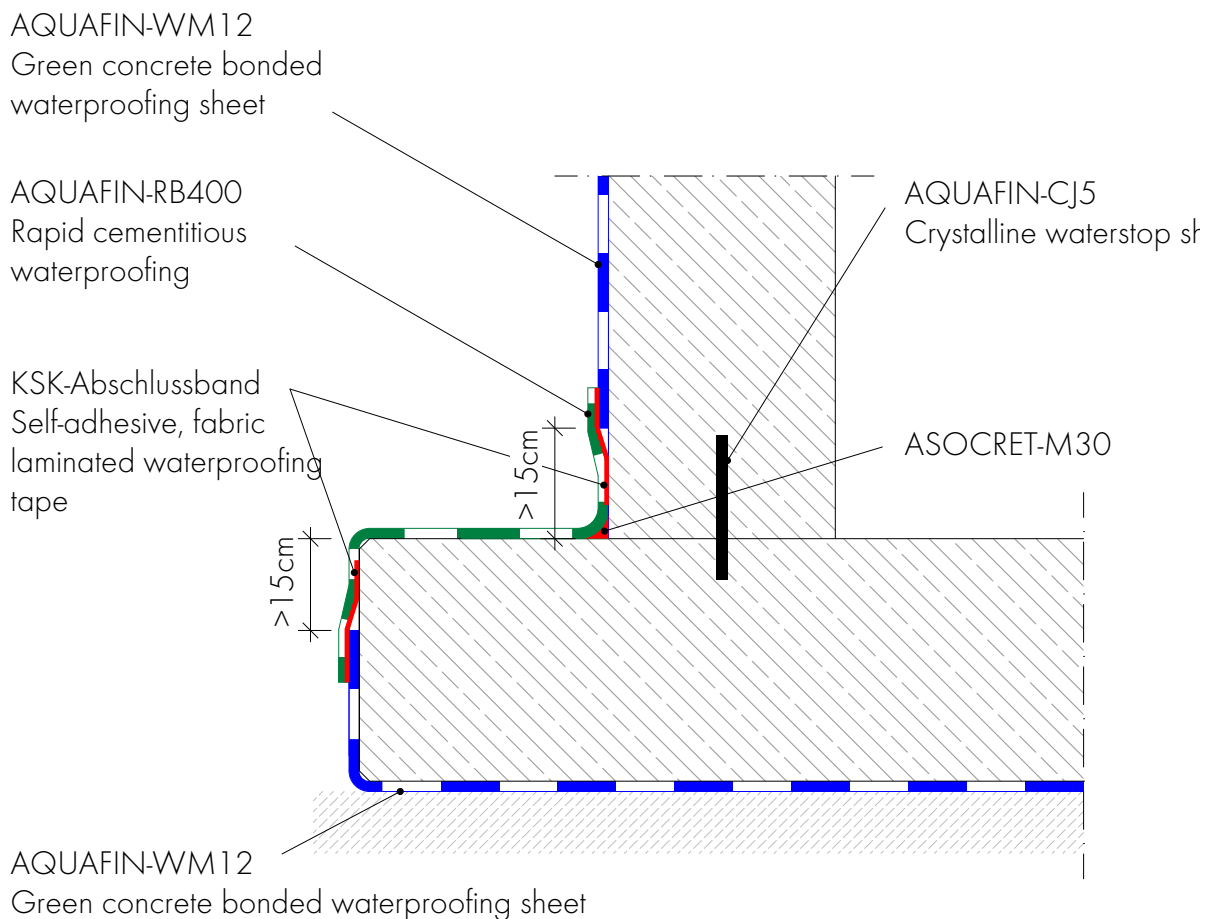




AQUAFIN®-WM12 Green concrete bonded waterproofing sheet

Floor/wall transition

Protruding floor slab



KSK-Abschlussband in the overlapping area AQUAFIN-WM12 / -RB400 10cm half overlapped

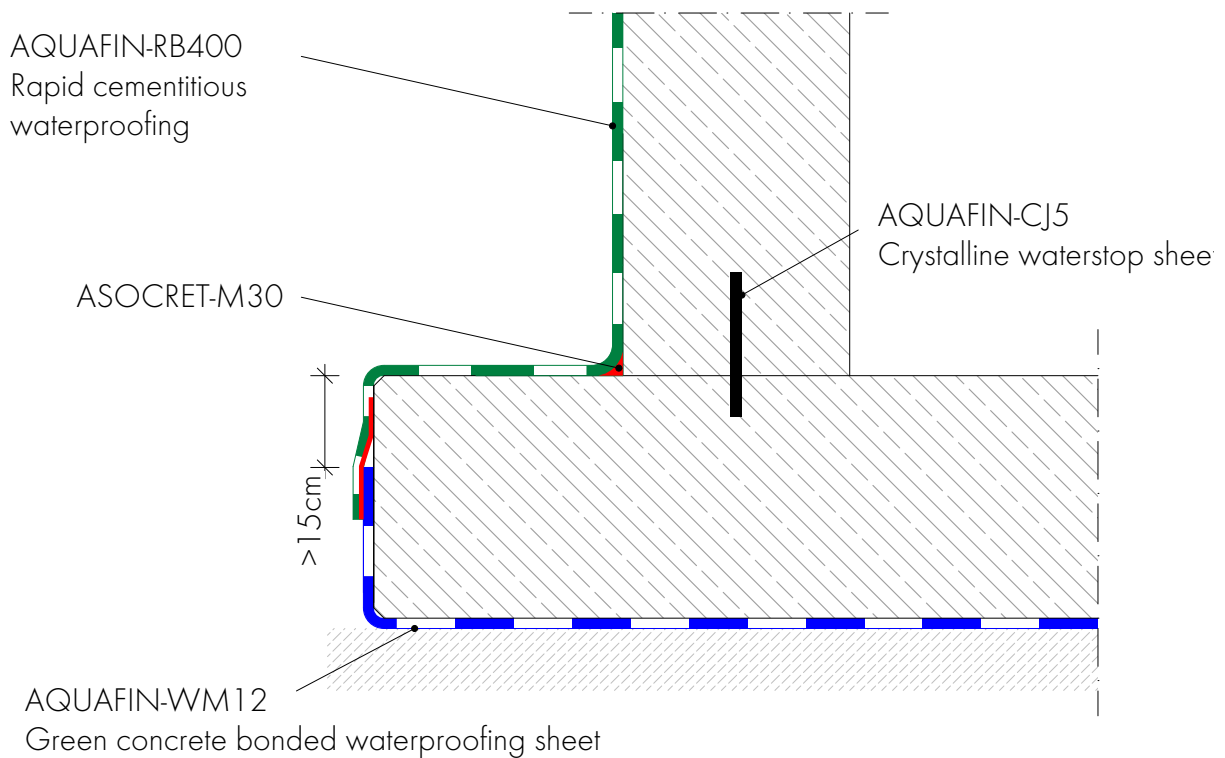


Technical Drawing 1.5.2.3.12

AQUAFIN®-WM12 Green concrete bonded waterproofing sheet

Wall installation with AQUAFIN®-RB400

Protruding floor slab

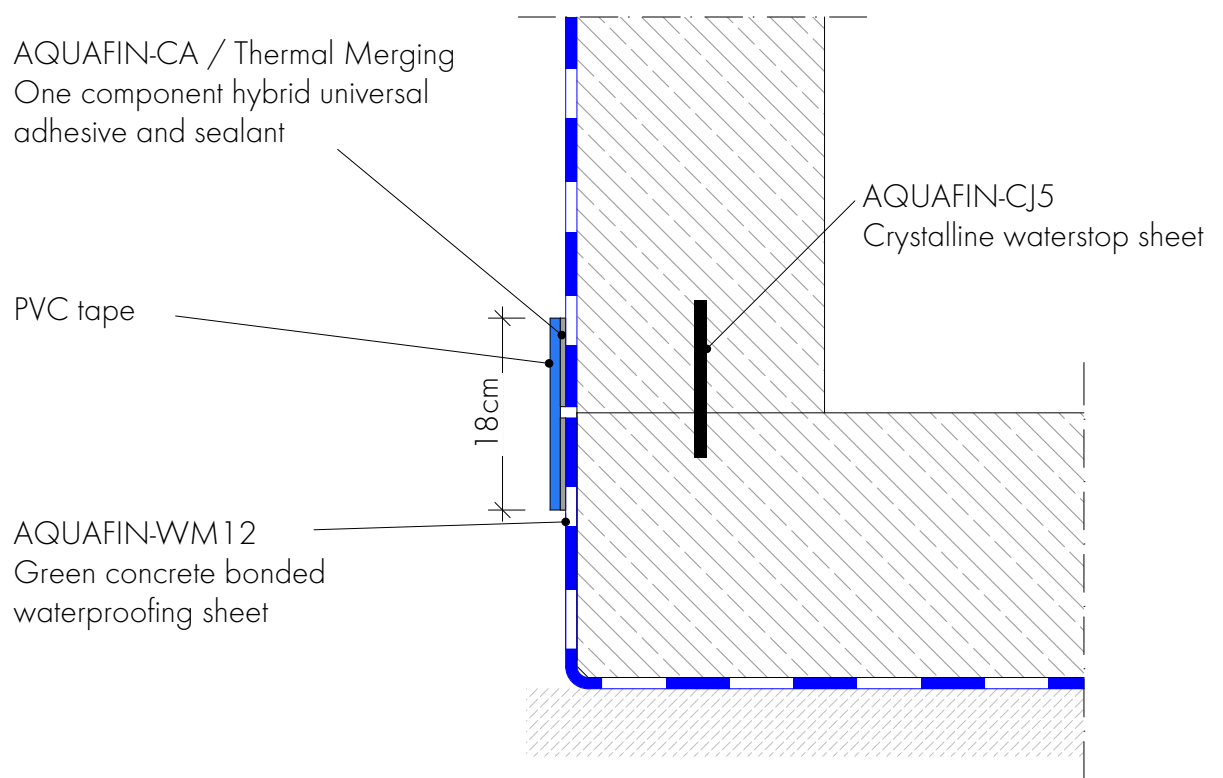




AQUAFIN®-WM12 Green concrete bonded waterproofing sheet

Floor/wall transition

Flush floor slab







The SCHOMBURG Group develops, produces and distributes building product systems for the areas of:

- Waterproofing and repair of buildings
- Tiles/natural stone/screed application
- Ground protection/floor coating systems
- Concrete technology

For over 80 years SCHOMBURG's development competence has been a recognised feature in both the domestic and the worldwide marketplace. Building product systems that are produced in-house are highly prized around the world.

Experts value the quality and the efficiency of building product systems, the services and therefore the core competence of the group of companies.

To meet the demanding requirements of an ever-changing market, we continuously invest in the research and development of new and already existing products. This guarantees an ever increasing product quality to the satisfaction of our customers.

SCHOMBURG GmbH & Co. KG
Aquafinstraße 2-8
D-32760 Detmold (Germany)
Telephone +49-5231-953-00
Fax +49-5231-953-333
www.schomburg.com

