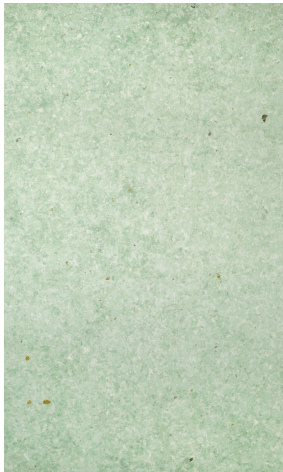


STEPBOARD

Impact sound reduction and de-coupling board



Material number	Length	Width, article	Material strength	Contents	Packaging	Colour
205833103	1 m	60 cm	approx. 9 mm	6 m ²	Board	green
205833201	1 m	60 cm	approx. 4 mm	12 m ²	Board	green
205833205	1 m	60 cm	approx. 15 mm	3.6 m ²	Board	green

Product features

- De-coupling and renovation board
- Very high dimensional stability
- Very high compressive strength
- High level of improvement in impact sound reduction
- Rot proof
- Thermal insulating properties
- Very low emission - EMICODE® EC 1^{PLUS}

Advantages

Easy application

Areas of application

- For decoupling
- For impact sound insulation

Existing test certificates

- Reaction to fire
- EMICODE licence

STEPBOARD

Technical Data

Material properties

Product components	Sheet goods
Base material	Polyester fibres
Sound deadening improvement factor ΔL_w with bonded tiles	13 dB
Sound deadening improvement factor ΔL_w with floating installation tiles	20 dB
Permissible traffic load, DIN EN 1991-1-1	5 kN/m ²
Classification of the reaction to fire in accordance with DIN EN 13501-1	Efl

Application

Consumption	1 piece = 1 m x 0.6 m
-------------	-----------------------

Application technology

Aids/tools

- Circular hand saw
- Jigsaw
- Carpet knife

Suitable substrate

- Concrete
- Cement screed (CT)
- Mastic asphalt screeds (AS)
- Calcium sulphate screeds (CA, CAF)
- Magnesia screeds (MA)
- Old coats made of ceramic, concrete and natural stone
- Wooden floor
- Levelling compounds

Suitable covering

- Vitrified tiles
- Ceramic with low water absorption < 0.5% (porcelain stoneware)
- Clinker
- Natural stone materials that are sensitive to discolouration and not translucent

Substrate preparation

Requirement for substrate

1. Load-bearing
2. Clean
3. Dry
4. Free of adhesion inhibiting substances

Preparing the surface

1. Prime absorbent substrates with ASO-Unigrund-GE or ASO-Unigrund-K.
2. Clean non-absorbent substrates and prime with ASO-Unigrund-S.
3. Surface irregularities can be compensated for with the SOLOPLAN-30-PLUS / SOLOPLAN-FA levelling compounds.
4. Calcium sulphate screeds must be roughened and vacuumed.
5. Prime calcium sulphate screeds with ASO-Unigrund-GE or ASO-Unigrund-K.
6. Calcium sulphate screeds must be dry. (< 0.5% in accordance with the CM method on unheated substrates; < 0.3% in accordance with the CM method on heated substrates)
7. Observe technical information no. 14.

STEPBOARD

Usage

Application

1. Cut STEPBOARD boards with suitable tools.
2. Lay the boards with a gap of ≥ 5 mm to the adjacent building components (supports, assembly parts, etc.) in order to prevent acoustic bridges / straining. We recommend the RD-SK50 edging strips for this.
3. STEPBOARD is laid using the MONOFLEX-XL, LIGHTFLEX or SOLOFLEX thin-bed mortars or SOLOFLEX in thin-bed laying. The remaining surface coating work can be performed after approx. 24 hours.
4. For fast building progress, gluing with the SOLOFLEX-fast, CRISTALLIT-FLEX rapid setting thin-bed mortars or the MONOFLEX-FB rapid setting flow-bed mortar is possible. The surface coating can be applied after approx. 3-4 hours here.

Application as a bonded impact sound and decoupling panel

1. After the primer / levelling compound has dried, apply the corresponding thin-bed mortar with a 6-10 mm notched trowel to the substrate.
2. Insert the boards into the fresh adhesive mortar and butt-join them together. Avoid junctions.
3. Tap the laid boards so that bedding covering the whole area completely is ensured. No adhesive mortar may get between the board joints.
4. After the adhesive mortar has dried, cover the butt joints with commercially available masking tape (approx. 20-50 mm).

Application as a bonded impact sound and decoupling panel on wooden substructures

1. Replace damaged areas in the wooden floor or use additional screws if necessary.
2. Close any joints between boards using a commercially available acrylic jointing compound.
3. Chipboard or oriented strand boards must be laid bonded, screwed and glued.
4. Sand the floor boards and parquet, and prime with ASO-Unigrund-S.
5. Surface irregularities can be compensated for using the SOLOPLAN-FA fibre reinforced floor levelling compound up to 20 mm in one application step.
6. After the primer / levelling compound has dried, apply the corresponding thin-bed mortar with a 6-10 mm notched trowel to the substrate.
7. Insert the boards into the fresh adhesive mortar and butt-join them together. Avoid junctions.
8. Tap the laid boards so that bedding covering the whole area completely is ensured. No adhesive mortar may get between the board joints.
9. After the adhesive mortar has dried, cover the butt joints with commercially available masking tape (approx. 20-50 mm).

Application as a renovation panel on walls

1. If using STEPBOARD in the walls (e.g. to compensate for recesses under tiles), the application substrate must be firm, load-bearing, free of old paints and suitable as a substrate for tiling.
2. After the primer / levelling compound has dried, apply the corresponding thin-bed mortar with a 6-10 mm notched trowel to the substrate.
3. Insert the boards into the fresh adhesive mortar and butt-join them together. Avoid junctions.
4. Tap the laid boards so that bedding covering the whole area completely is ensured. No adhesive mortar may get between the board joints.
5. In the transition area from the old covering and STEPBOARD boards, overcoat the joint that occurs by inserting commercially available, alkali-resistant glass scrim with the thin-bed mortar used.

Storage conditions

Storage

Dry and horizontal. 24 months

Disposal

Product leftovers can be disposed of in household waste.

STEPBOARD

Notes

- Decoupling measures are special construction methods. We recommend agreeing on the design separately.
- The STEPBOARD 4 mm can be used on heated substrates without appreciable heat losses. STEPBOARD 9 mm and 15 mm have thermal insulating properties. Under thin-layered hot water or electrical panel heaters, the effectiveness when using the 4 mm board is increased by around 30%, by around 50% with the 9 mm board and by around 60% in conjunction with the 15 mm board.
- Border and structural movement joints should be carried over to or installed at the designated location; suitable means (e.g. edge strips) should be used to detach them! Movement joints must always be arranged in door/sill areas!
- STEPBOARD 9 mm and 15 mm have thermal insulating properties and are therefore only moderately or not suitable for use on heated constructions! The total thermal resistance of the coating structure must not exceed 0.15 m²K/W. Also see: Relevant guideline no. 9 "Use of floor coverings on panel heaters and coolers - requirements and notices" from the Bundesverband Flächenheizungen und Flächenkühlung e. V. (German Federal association for panel heaters and coolers)!
- Observe the technical data sheets of the products mentioned and the laying instructions from the surface coating's manufacturer!
- When laying natural stone and synthetic stone, the product-specific properties of the coating materials (tendency to discolour, risk of curling, etc.) and the laying recommendations of the manufacturer must be taken into account. We recommend carrying out trial laying!
- Apply the RD-SK50 self-adhesive edging strips to the wall-floor transition and the rising building components in advance.

Planning, inspection of substrates and building site circumstances, laying, grouting and subsequent care of the work must be done in accordance with the relevant DIN standards and recognised rules of technology (e.g. the ZDB sheets of the Zentralverband Deutsches Baugewerbe e.V.) in the latest version.

The rights of the buyer with regard to the quality of our materials are based on our terms and conditions of sale and delivery. Our technical advice team will be happy to advise you in the case of requirements that exceed the scope of the application described here. In order to be binding, a legally binding written confirmation is required. The product description does not release the user from a duty of care. Lay a test area in the event of uncertainty. This version becomes invalid in the event of a new version being issued.