

Product information

Smoothing and levelling compounds

SOLOPLAN®-FA

Self levelling, fibre reinforced floor levelling compound

C30-F7



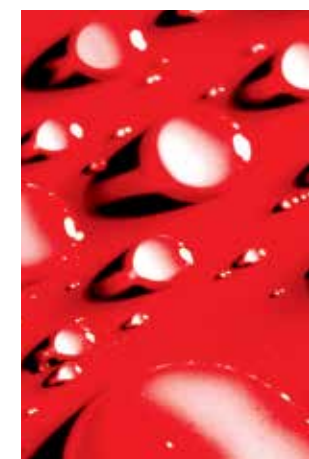
Technical Data:

Basis:	Special cement, aggregates, additives
Classification:	EN 13813 CT-C30-F7
Application temperature:	+15°C to +25°C
Pot life*:	approx. 20-30 mins
Water addition:	6.0-6.3 l water : 25 kg SOLOPLAN-FA
Consumption:	approx. 1.6 kg/m ² /mm thickness
Foot traffic*:	after approx. 3 hrs
Ready for finishes*:	after approx. 24 hrs
Full service conditions*:	after approx. 7 days
Reaction to fire:	Class E
Packaging:	25 kg plastic bag

*) Values are valid at +23° C and 65% relative humidity.

Areas of application:

- SOLOPLAN®-FA is a powder based, highly modified factory blended mortar with reinforcing fibres, which minimises cracks on wooden floors. For producing self-levelling flat, high strength substrates to receive ceramic tiles and slabs. On wooden floors at thicknesses from 3 to 20 mm.
- SOLOPLAN®-FA can be installed over wooden floorboards and V100 grade chipboard, without additional reinforcing mesh as well as on all mineral-based substrates.
- SOLOPLAN®-FA is also suitable for rooms with light duty water exposure (wet duty exposure class A0 in accordance with the ZDB information sheet "Bonded waterproof membranes") when treated with a suitable SCHOMBURG waterproof membrane.
- SOLOPLAN®-FA is suitable for use in interior rooms in accordance with the French VOC by-law and is very low emissions in accordance with GEV EMICODE.



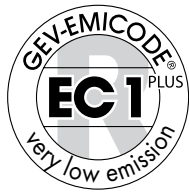
SCHOMBURG GmbH & Co. KG
Aquafinstraße 2-8
D-32760 Detmold (Germany)
phone +49-5231-953-00
fax +49-5231-953-108
email export@schomburg.de
www.schomburg.com

SOLOPLAN®-FA

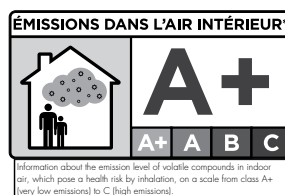
Self levelling, fibre reinforced floor levelling compound

Properties:

- For thicknesses from 3 to 20 mm in one application
- Fibre reinforced
- Self levelling
- Rapid hardening
- Very low emissions
- Very low consumption
- For interiors
- Suitable for heated screeds
- Pumpable



CE	
SCHOMBURG GmbH & Co. KG Aquafinstraße 2-8 D-32760 Detmold 14 2 00012	
EN 13813 SOLOPLAN®-FA Cement screeding mortar for use in buildings CT-C30-F7	
Reaction to fire:	Class E
Release of corrosive substances:	CT
Compressive strength:	C30
Flexural strength:	F7



Product application:

Place 6.0-6.3 l water, dependent on desired consistency, in a clean suitable mixing container and mix together with 25 kg SOLOPLAN®-FA to a lump-free, flowing mass. After standing for an adequate time to mature, pour the mixed levelling compound onto the prepared substrate. To ensure even distribution of the material, use a suitable rake or trowel. This should be followed by de-aerating the fresh material by rolling through with a spiked roller. For installing SOLOPLAN®-FA in large areas, we recommend suitable mixing equipment such as e.g. PFT G4/ G5.

Application:

The substrate must be dry, load-bearing, sound with a good key, free from materials acting as separating substances. Remove separating layers, laitance or similar by suitable means e.g. by mechanical blasting techniques or scabbling. With unbonded or floating screeds, the readiness to receive SOLOPLAN®-FA is to be tested by the carbide (CM) method (• CT ≤ 2.0 %, • CA/ CFA unheated ≤ 0.5 %, heated ≤ 0.3 %). The residual moisture of the wooden substrate may not exceed an equilibrium moisture content of 6 to 12% by weight. Screw fix all loose, springy or squeaking boards or sheets. Abrade wooden substrates and thoroughly vacuum.

Priming:

Calcium sulfate screed: ASO®-Unigrund-S
(Mixing ratio 1:1 with water)

Cement-based screed: ASO®-Unigrund-S
(Mixing ratio 1:1 with water)

Wooden substrates (screwed) such as e.g. OSB boards, wooden floor boards, V100 chipboard: ASO®-Unigrund-S

Well bonded ceramic tiles, terrazzo: ASODUR®-SG2 *

*Blinded to excess with 0.5 - 1.0 mm quartz sand. Only sweep off and vacuum excess sand once reacted (approx. 16 hrs * 1).



1 Load-bearing substrate



2 Cleaning the substrate



3 Priming the substrate, e.g. with ASO®-Unigrund



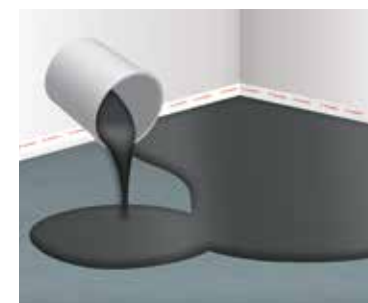
4 Placing the edge isolating strip RD-SK50



5 Adding the levelling compound to the pre-weighed water



6 Mixing the levelling compound



7 Tipping out the levelling compound



8 Evening and de-aerating the fresh levelling compound



9 Finished levelled floor ready for finishes