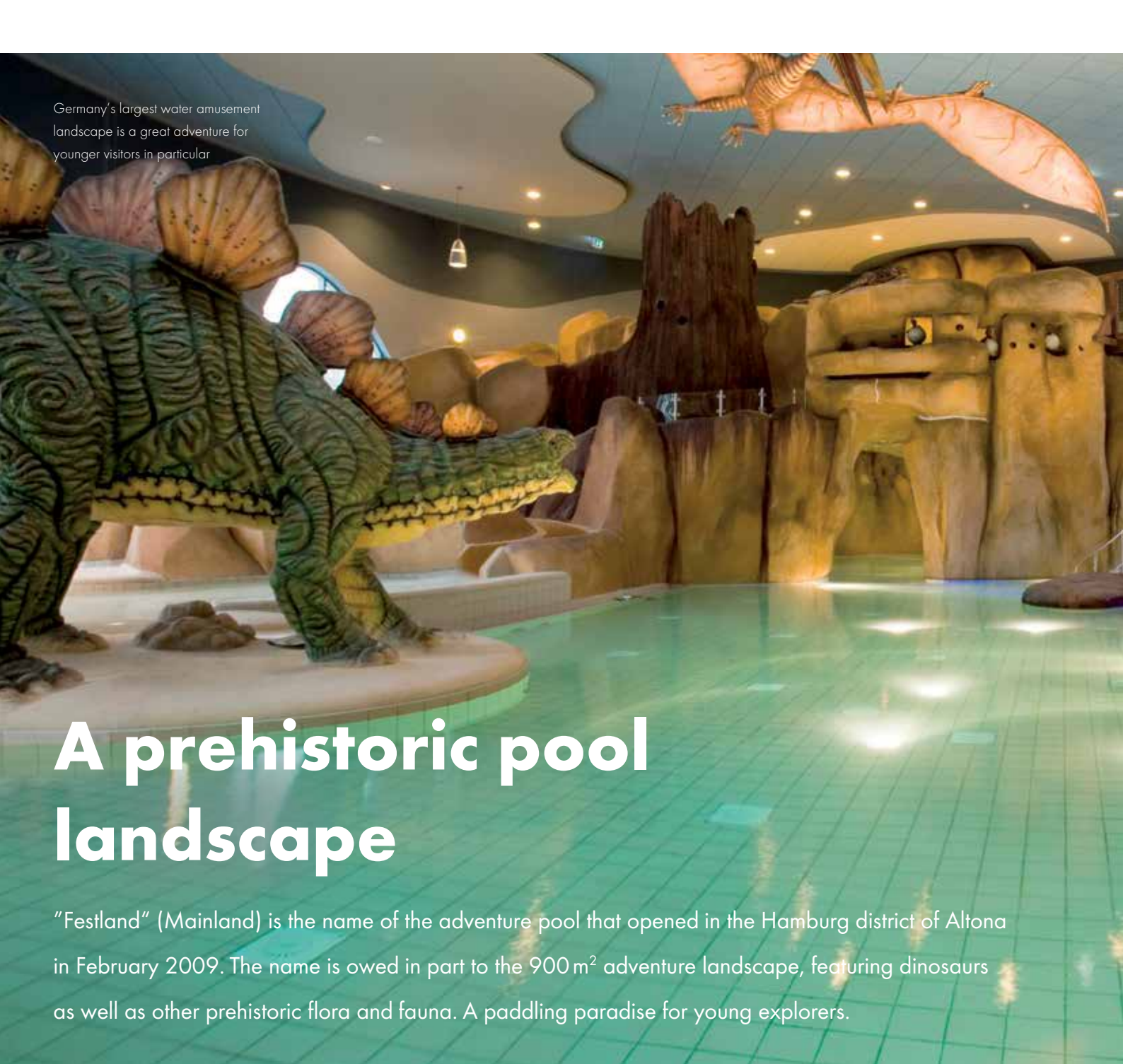




 **SCHOMBURG**
report 02

Festland
Bäderland, Hamburg



Germany's largest water amusement landscape is a great adventure for younger visitors in particular

A prehistoric pool landscape

"Festland" (Mainland) is the name of the adventure pool that opened in the Hamburg district of Altona in February 2009. The name is owed in part to the 900 m² adventure landscape, featuring dinosaurs as well as other prehistoric flora and fauna. A paddling paradise for young explorers.

It was a sad day for all in 2005 when the gates of the venerable old Bismarck-Pool at the Altonaer Bahnhof closed for the last time. Four years later, the first visitors enter the "Festland," at triple the size with 12,600 m² - and marvel at Germany's largest water amusement playground. The prehistoric theme park in Holstenstraße is especially popular with children. The mini pool and adventure pool, "Dinoland", offers youngsters many opportunities for exploration and adventure among the water-spouting, life-sized models of lizards, turtles and dinosaurs. Tyrannosaurus rex, the most imposing of all dinosaurs, stands six metres tall reaching almost to the roof of the hall.

Prehistoric theme park

The habitat of the extinct giants is represented by waterfalls, a volcano that erupts every 15 minutes, prehistoric plants and replica rock formations. Recurring motifs are also present, based on the themes of „prehistory and evolution“. Not missing any details, even prints of giant ferns and dinosaur tracks were carefully incorporated into the artificial rocks.

Children on a voyage of discovery

While traversing the earth-coloured tiled paths the little explorers have to overcome all sorts of "dangers". The trail leads past gushing geysers into the depths of a smoking volcano. Another narrow passage leads to a small precipitous grotto, and a special challenge awaits the youngsters on the top floor. After crossing a hanging bridge they can zoom down a 20-metre slide! There are always new things to discover - even on the second or third visit.

It is the attention to detail exercised by the planners that characterises a great swimming pool. Despite intricate details and forms, the design does not appear overloaded, which has a positive effect on the perception of space. Therefore a visit to the pool is not only a treat for one's body, but through the ever present bubbling, spouting and rushing water it is also an optical pleasure.

Although primarily aimed at children, "Festland" also offers swimming enjoyment for adults. In contrast to the meandering water landscape, swimmers can choose from three separate 25 m long pools, one of which is outdoors. The child and adult areas are strictly separated,



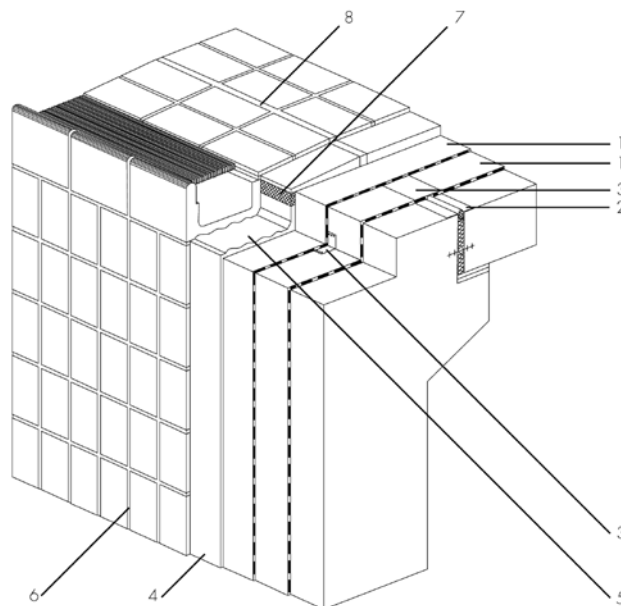
Photo: Karin Muddemann



"FOCAL POINT: WATER"

Torsten Korthals, Managing Director and Master Tiler, Fliesen Le...

Construction of a pool with national importance is always a great challenge. In the case of "Festland", we utilised a wide range of S... and sauna facilities. Product specific training provided by the company and necessary equipment enabled us to complete this major project. The key was the waterproofing, which was carried out with products such as AQUAFIN (waterproofing). Tile grouting was done with products such as ASO (ASO-Flexfuge, ASO-DUR-EK98, ASO-Flexfuge, CRISTALLFUGE, ASODUR-EP/FM). Overall, we installed wall and floor tiles in various designs and colors. The new building was a major logistical achievement of which we are proud.



- 1 Waterproofing AQUAFIN-2K or AQUAFIN-2K/M
- 2 Joint treatment ASO-Joint-Tape-2000-S
- 3 Joint treatment ASO-Joint-Tape-2000
- 4 Thin-bed adhesive mortar SOLOFLEX or UNIFIX-2K/6
- 5 Drain Channel set in ASO-EZ4-Plus mortar bed
- 6 Tile grout HF05-Brillanfuge or ASODUR-EK98
- 7 Capillary blocking joint filler ASODUR-EP/FM
- 8 Elastic joint sealant ESCOSIL-2000-UW

Wiesbaden pool, not to scale

allowing adults the opportunity to relax and find some peace and quiet. If visitors are looking for a hot tip, they should check out the four saunas. Additionally, the upper floor also houses the massage and wellness area, the small pool on the outdoor terrace and the catering facilities. Even the youngest explorers will find ample supplies to sustain them in the bistro. After all, according to the youngest, the expedition through the "Festland" is far from over.

Frank Pansegrau, Hamburg



PRODUCT EXPERTISE

Areas Completed Pools, pool surrounds and wet rooms (sauna areas + showers) were waterproofed. Tiles were laid and grouted in all areas.

The paddling pool was waterproofed and coated | **Synthetic Dispersion** ASOPLAST-MZ | **Contact and Bonding Agents** ASOCRET-HB-flex |

Waterproofing AQUAFIN-2K/M | **Tile Grout** HF05-Brillanfuge, ASODUR-EK98, ASO-Flexfuge, CRISTALLFUGE, ASODUR-EP/FM |

Tile Adhesive SOLOFLEX-white, SOLOFLEX-FAST, ASODUR-EK98-Floor, LIGHTFLEX | **Levelling Mortar** SOLOCRET-1.5, ASO-EZ4-Plus |

Primer ASO-Unigrund-GE | **Epoxy primer** INDUFLOOR-IB1240, INDUFLOOR-IB1225 |

Sealing Tape-Corners/Sleeves ASO-Joint-Tape-2000, ASO-Joint-Sleeve-Wall, ASO-Joint-Tape-2000-S, ASO-Joint-Tape-2000-S-Wide,

ASO-Joint-Tape-2000-S-Corners 45° exterior, ASO-Joint-Tape-2000-Corners 45° interior, ASO-Joint-Tape-2000-Sanitary |

Waterproofing PU ASOFLEX-AKB-Wall | **Other** UNIFLEX-B, INDU-Fibrefiller, AQUAFIN-2K-Fabric

PROOFING"

pping GmbH & Co. KG, Vreden

at challenge, especially for the companies performing
SCHOMBURG products in the pool landscapes
struction chemicals manufacturer, combined with the
rapidly and expertly. A major focal point of the project
as AQUAFIN 2K/M (2-comp. flexible, cementitious
O-Flexfuge (a rapid-hardening cementitious joint mort-
nd patterns in the "Festland". The punctual completion of
e are very proud.



Photos: Festland: SCHOMBURG GmbH

The varied pool with its many nooks and crannies offers numerous areas of seclusion

"HIGH DEGREE OF STRUCTURAL ENGINEERING SAFETY"

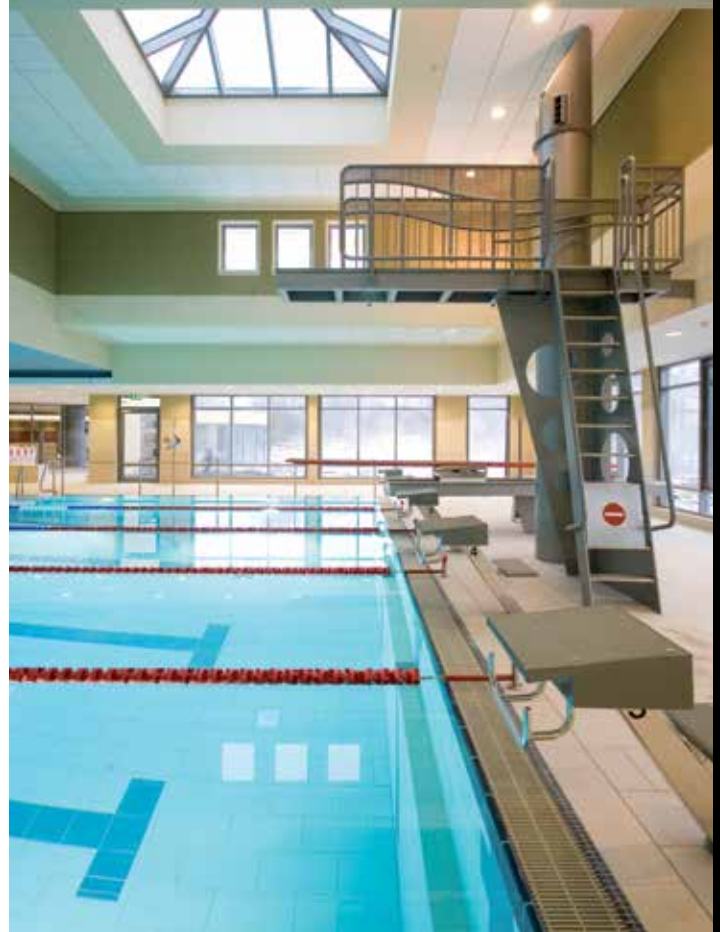
Christian Bär, Project Manager, de witt janßen partner, architects and engineers, Bad Zwischenahn

At the "Festland" we tiled a surface area of approximately 8,000 m² including wall and floor areas, of which the majority was sealed with the cementitious waterproofing product AQUAFIN-2K/M. Particularly challenging was the design of the children's amusement area, over 900 m² in size, with its amorphously formed rocky landscape. The challenge was finding a safe and secure waterproofing system for the wall-floor joints in the artificial rock areas. Together with SCHOMBURG we decided on a solution which required pouring the fibreglass bonded screed so that a roughly 10 cm wide gap was left from the screed to the artificial rock formations. In addition to the AQUAFIN waterproofing which was already applied to the rough concrete, the resulting gap was filled with ASOFLEX-AKB, a highly flexible polyurethane waterproofing sealant, thereby creating a secure seal. Since its opening in February 2009, the selected waterproofing system has proven itself flawless.

Photo: de witt janßen partner, Architekten und Ingenieure



SCHOMBURG products are applied in all areas of the swimming pool, the dinosaur landscape and the outdoor areas



CONSTRUCTION DATA

Building Festland-Bäderland, Hamburg

Client Bäderland Hamburg GmbH

Architect de witt janßen partner, architects and engineers,
Bad Zwischenahn

Tiling work Fliesen Lepping, Vreden

Total areas 8,000m²

SELECTION OF REFERENCES



Design House, Switzerland



Rhein-Neckar-Arena, Sinsheim



Rehabilitation Centre, Luxembourg

Design House, Switzerland residential complex | high-rise building | administrative building **Rhein-Neckar-Arena, Sinsheim** football stadium
Rehabilitation Centre, Luxembourg swimming pool | indoor swimming pool | open-air swimming pool **Zoo, Landau** water basin **Village Church, Winkelstedt** church | mosque **Port Renovation, Illichivsk Ukraine** port **LTU Arena Duesseldorf** football stadium **Sachsenklinik, Leipzig-Bennwitz** hospital | clinic | health clinic | sanatorium **5-Star Hotel, St. Truskavetz, Ukraine** swimming pool | indoor swimming pool | open-air swimming pool



SCHOMBURG

SCHOMBURG GmbH & Co. KG
Aquafinstraße 2-8
D-32760 Detmold (Germany)
phone +49-5231-953-00
fax +49-5231-953-108
email export@schomburg.de
www.schomburg.com

