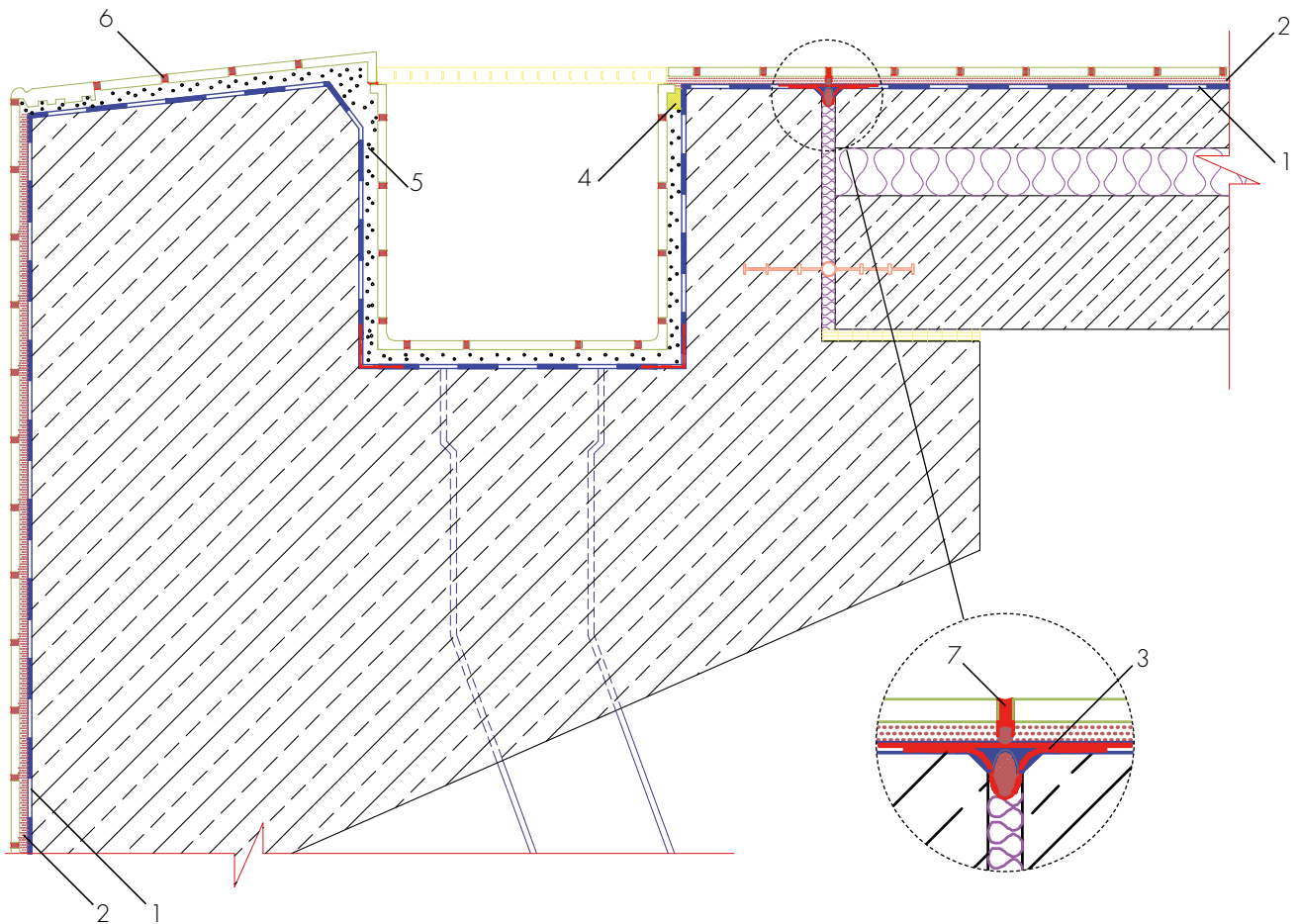


Representation of the installation including sealing the Finnish channel in a swimming pool (Thin-bed)



- 1 Waterproofing with AQUAFIN-2K/M-PLUS or AQUAFIN-RS300
- 2 UNIFIX-S3 elastic tile adhesive
- 3 ASO-Joint-Tape-2000-S inlay, with ASO-Joint-Tape-2000 laid over the top for protection
- 4 Capillary-breaking layer with ASODUR-EP/FM
- 5 "Finnish channel" overflow channel laid in the mortar bed from ASO-EZ4-PLUS
- 6 Grouting with HF05-Brillantfuge or ASODUR-DESIGN
- 7 Sealing with ESCOSIL-2000-UW