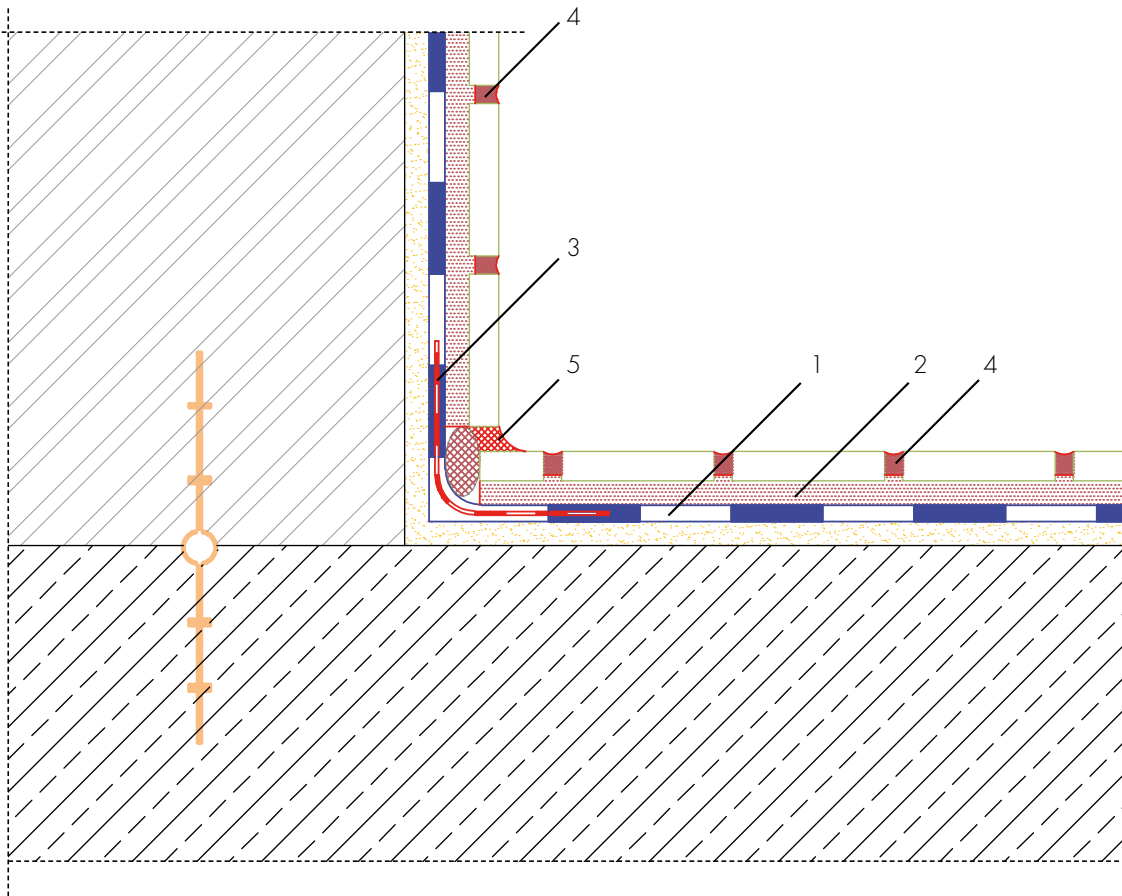


Pool bottom (Thin-bed)

Wear class B and water impact classes W1-B and W2-B



- 1 Waterproofing with AQUAFIN-2K/M-PLUS / AQUAFIN-RS300*
- 2 Tile adhesion with UNIFIX-S3 or SOLOFLEX
- 3 ASO-Joint-Tape-2000-S
- 4 Grouting with ASODUR-DESIGN or HF05-Brillantfuge
- 5 ASO-SR and elastic sealing ESCOSIL-2000-UW

* water depth of up to 6 m