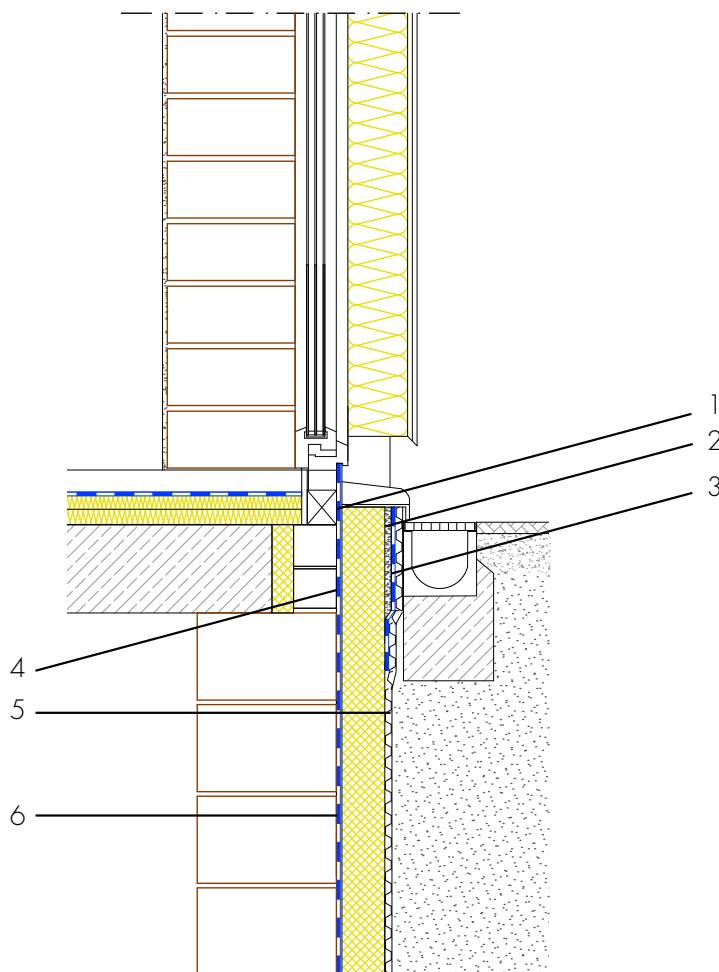


## Ground-level element, brick basement with perimeter insulation

Single-shell masonry with composite thermal insulation system



- 1 Connection of ground-level element  
- ASO-Joint-Tape-2000-Sanitary -  
connection of the ground-level element  
to the building waterproofing with a joint  
tape with self-adhesive strip
- 2 Building skirt render - ASOCRET-M30  
- Protection of the waterproofing  
from damage and visual design of the  
building skirt area
- 3 Moisture protection - AQUAFIN-RB400  
- Protection of the building skirt render  
from water penetration from behind
- 4 Waterproofing from spray water at  
the wall skirting - AQUAFIN-RB400 -  
Protection of the building envelope from  
damp and foreign matter
- 5 Protection of the waterproofing -  
Insulation, protection and drainage  
boards - Protects the waterproofing from  
damage
- 6 Building waterproofing in contact with the  
ground - AQUAFIN-RB400 - Two-layer  
waterproofing to protect the building  
envelope from moisture and water